

CompassProfile

COLOR MANAGEMENT BEGINS WITH AN ACCURATE PROFILE.

Praxisoft's **CompassProfile** is renowned for making the industry's best ICC profiles "right out-of-the-box."

CompassProfile enables you to accurately reproduce color from scanner to printer, and across ALL of your output devices.

MANAGING COLOR IN A DIGITAL WORKPLACE IS SERIOUS BUSINESS.

Properly managing color across ALL your devices can lead to tremendous savings in time and money.

CompassProfile enables you to decrease time spent editing files and reduce proofing cycles. The net result is an improved bottom line and competitive advantage.



Find out more on our website: www.praxisoft.com

CompassProfile

COMPASSPROFILE KEEPS ORIGINAL ARTWORK REPRODUCTION CONSISTENT FOR IMAGING DYNAMICS

FINE ARTS DIGITAL REPRODUCTION WIDE FORMAT PRINTING DEVICES

Paramus, NJ - Nowhere is color more critical than in the reproduction of original artwork. For years Imaging Dynamics has struggled to match the printed pieces they produce on their wide format printing devices to the original colors of their clients artwork.

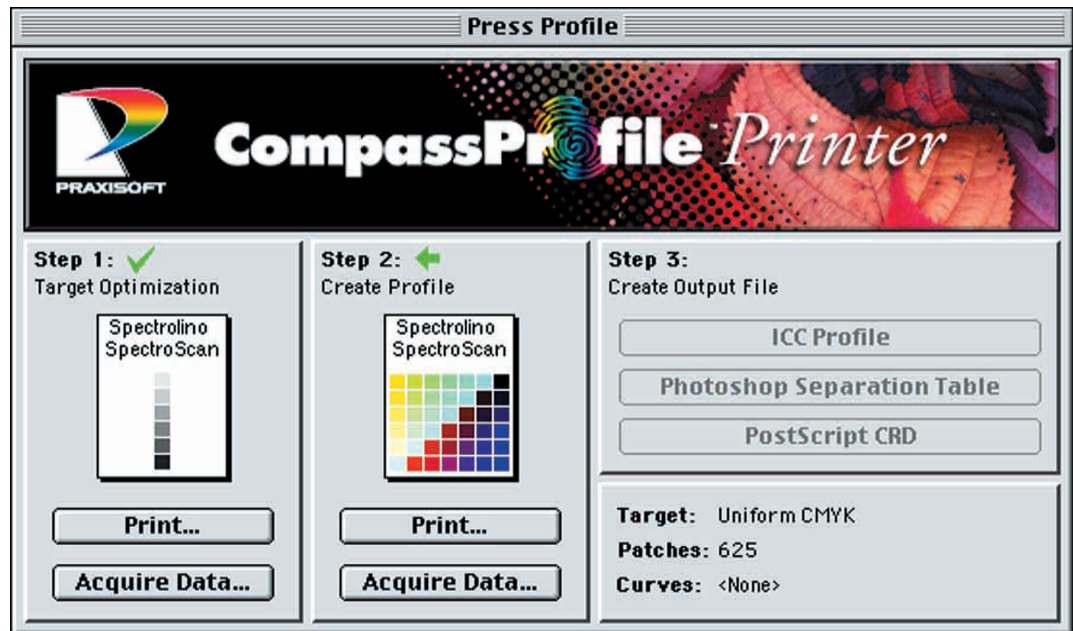
An often lengthy & manual process of printing, "tweaking" and reprinting was slowing down production times & driving up costs. With CompassProfile, Imaging Dynamics profiled their input scanners, digital cameras & their various output printers. Almost overnight their color management problems were solved.

CompassProfile's accurate profiles allowed them to input the original artwork & print the final copy in one easy step. Imaging Dynamics was going from Original to Reproduction in one step in about a day.

Stephen Saltman, President of Imaging Dynamics later told us, "If I were to tell you how many one shot finals we made, you would not believe me, or believe how esoteric we are and how many tweaks we are known for making before we are satisfied, so I won't. This package will save you time, money and psychiatric help."

Praxisoft, LLC.

1400 Shepard Drive
Sterling, Virginia 20164
703-450-8001



Creating ICC printer profiles is as quick as one, two, three. The first step eliminates the need for tedious and time consuming editing of your profiles. The second step characterizes the gamut of your device. The third step creates your ICC profiles.

Technical Features:

- New intuitive interface for accurate profiles "right out of the box" – no third party software required.
- Create custom ICC/ColorSync profiles for both CMYK/RGB print devices and scanners.
- Profile support for film recorders and transparent material.
- Expert tools for advance profile "tweaking" using hue shifts & Photoshop curves.
- Supports industry's leading spectrophotometers including: X-Rite's DTP-22 and DTP-41, and GretagMacbeth's Spectrolino with Spectroscan table.
- Built-in target generation with flexible target formats and customized patch configurations – optimizing the measuring process for your output device.
- The industry's only profiler with built-in support of the Flexographic Technical Association's (FTA) flexography target.
- Import text documents generated by any industry colorimeter or spectrophotometer not directly supported for easy profiling.
- Profile non CMYK inksets, ideal for the Packaging industry.

System Requirements:

MacOS version 7.0 or later, 4mb available on hard drive, 8mb application RAM, Power Macintosh or clone equivalent, Colorimeter or Spectrophotometer (CompassProfile Printer), Scanner (CompassProfile Scanner).

1.800.557.7294

© 1999 Praxisoft, LLC. All rights reserved. Praxisoft and the Praxisoft logo, AutoFlow, VectorPro, CompassProfile, CompassPro XT and PraxiCare are registered trademarks of Praxisoft, LLC. All other brand names mentioned are registered trademarks of their respective holders and are hereby acknowledged.

