

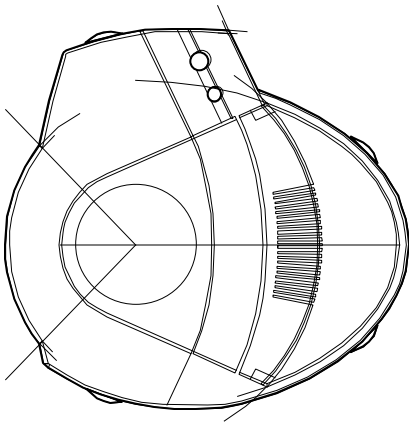
TANGO.

Stand-up performance in
an advanced drum scanner.





TANGO's compact footprint is ideal for office environments.



TANGO is designed with operating comfort and ease-of-use in mind.

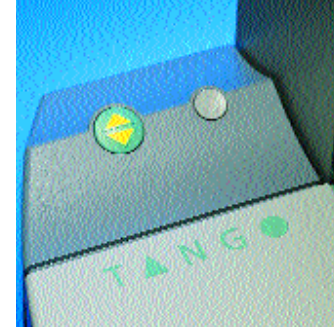
Never have so many advances been packed into so little space.

Our new TANGO™ doesn't look like a conventional drum scanner. It doesn't perform like one either. For starters, in terms of its price/performance ratio, TANGO sets a new standard. And unlike many other drum scanners, it's incredibly easy to use.

These advantages plus built-in LinoColor™ benefits such as ICC® compliant color management, CMYK soft proofing and press profiling are all packed into a compact footprint. TANGO looks as good as it performs too. And because TANGO is manufactured by Heidelberg, it combines precision engineering with low noise operation to make an ideal focal point for your front office.



TANGO is designed for top quality and positional accuracy.



Quality is built in.

Perfect color management with LinoColor.

Top quality scans at the press of a button.

Special functions for special needs.

Built-in quality improves reliability. That fact is vital to the very existence of many highly automated businesses.

TANGO sets new standards you can profit from. Take the integrated LinoColor color management which is fully compliant with ColorSync® 2.

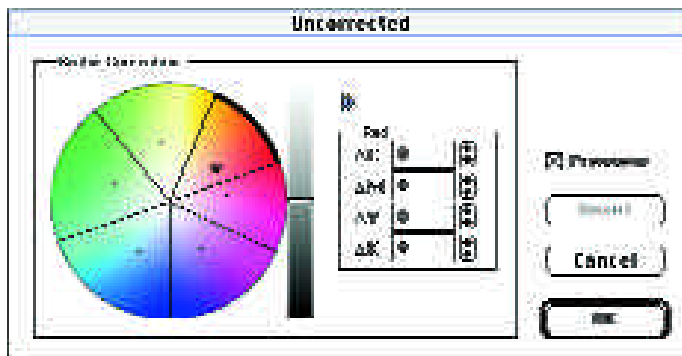
TANGO is equipped with intelligent software components that ensure consistent first-class scans automatically. That increases your productivity – particularly with high volume throughputs. Other features include automatic image analysis and image adjustment, gradation correction and color cast compensation. You also profit from automatic workflow organization.

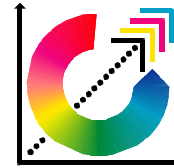
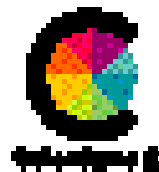
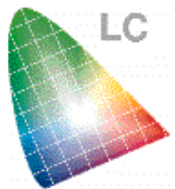
The new TANGO gives you automatic workflows with the click of a mouse. It also allows you to respond flexibly to your customers' special requests by giving you a whole range of image adjustment and color correction tools. You can even select between intuitive color correction (LCH) and print process oriented control (CMYK).

Heidelberg produces TANGO under the most stringent conditions and integrates high quality into every aspect of its design. That provides you with a unit you can rely on even when the going gets tough. Some aspects of TANGO's quality will be apparent even before you buy it. Example: High enlargements are scanned jitter-free with complete positional accuracy.

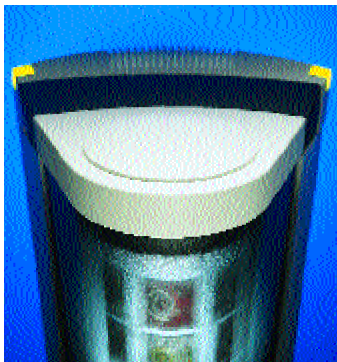
LinoColor not only lets you calibrate your own system from scan to color monitor and proof, it also allows downstream users to interpret and process your data exactly as you had in mind.

CMYK corrections are oriented to the printing process.

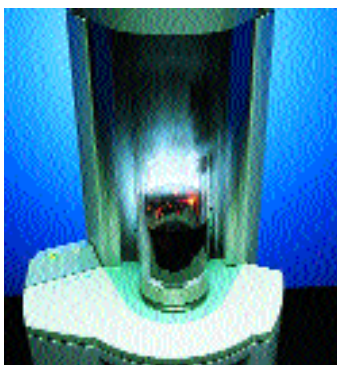




Flexible modules
for automatic workflow.



TANGO offers unbeatable
productivity at every stage of the
prepress workflow. You get top
scanning quality in all data
formats. TANGO processes the
formats you need to scan into
image databases. TANGO scans
uncalibrated RGB, calibrated
RGB or CIELAB. And TANGO
supplies you with CMYK data
specially matched to your
printing process. Best of all,
the whole procedure is simple
and automatic – just like any
good workflow should be.





Perfect mounting
with TANGO Mount.

This mounting tool has been specially designed for TANGO and will help optimize your workflow. It ensures careful drum handling and allows you to position originals on the drums with exact precision. TANGO Mount even makes quick work of oil-based mounting.



TANGO

Scanning system	Drum scanner, 3 photomultiplier
Software	Reproduction software LinoColor for Power Macintosh™ computers
Drum	TANGO Drum
Mounting aids	TANGO Mount (optional)
Scanning format, max.	17.7" × 18.8"
Types of originals	Transparency and reflective, color and gray, contone and linework, positive and negative
Original thickness, max.	2 mm
Scaling	20 – 3000 %
Scaling calculation	Stepless with AutoScaling hardware in the scanner
Sharpness calculation	AutoSharpening hardware in the scanner, plus software filters in LinoColor
Scanning resolution, max.	11000 dpi = 4246 L/cm, if required, automatic stepless calculation using AutoScaling hardware
Destiny range	3.9 D, measured on film output of grey scale
Max. resolvable density	4.2 D, measured on film output of grey scale
Signal resolution	12 Bit per pixel and color (log.)
Interface	SCSI for connecting a workstation
Power supply	100 – 230 V ± 10 %, monophase
Power consumption	Approx. 500 W
Ambient conditions	64° – 82°F, 30 – 80 % relative humidity
Dimensions (W × H × D)	24.4" × 59.3" × 26", height for drumchange 85"
Weight	Approx. 551 lbs
Approvals	CSA, GS, UL, VDE, CE
Max. drum speed	1800 RPM
Batch Scanning, Background Scanning, Team Scanning	JobAssistant
Automatic image analysis	ColorAssistant™
Editing of print tables	Print Table Editor

LinoColor Software

LinoColor	Scanning and reproduction software for Power Macintosh computers
Software modules, included	LinoColor with ColorAssistant, JobAssistant, Print Table Editor, Interchange Pro and Interchange (for JPEG compression)
ColorAssistant	Automatic image analysis for highlight/shadow setting, color cast removal, contrast and chroma gradation
JobAssistant	Flexible and productive workflows: batch scanning, background scanning, team- and network scanning
Software modules, options	Print Open ICC to generate output profiles View Open ICC to generate monitor profiles Scan Open ICC to generate scanner profiles
Supported color spaces	CIELAB, CMYK
Supported data formats	TIFF™ LAB, TIFF RGB, TIFFG, TIFF B, TIFF CMYK, TIFF YCC, PS, EPS, DCS, PICT™
Macintosh® minimum requirements	Power Macintosh, System 7.5, RAM 32 MB, hard disc 300 MB, 21" color monitor with ColorSync 2 profile or calibrated 21" color monitor
Recommended configuration	Power Macintosh, System 7.5, RAM 64 MB, hard disc 1 – 2 GB, 21" color monitor with ColorSync 2 profile or calibrated 21" color monitor

Heidelberg USA
Corporate Office - Atlanta
Heidelberg USA, Inc.
1000 Gutenberg Drive
Kennesaw, Georgia 30144
USA
Phone: 770-419-6500
Fax: 770-794-6272

Heidelberg Canada
Corporate Office - Toronto
Heidelberg Canada
50 Worcester Road
Etobicoke, Ontario M9W 5X2
Canada
Phone: 416-675-2700
Fax: 416-674-6849

InternetHome Page
<http://www.heidelbergusa.com>



Phone: 518-373-1225
Website: www.hdia.org

© 1998 Heidelberg USA

Subject to changes and modifications without notice.
Heidelberg, Hell, Lino, Linotype and Vectora are registered trademarks. ColorAssistant, LinoColor and TANGO are trademarks of Heidelberger Druckmaschinen Aktiengesellschaft.
ColorSync and Macintosh are registered trademarks; PICT and Power Macintosh are trademarks of Apple Computer Incorporated. TIFF is a trademark of Microsoft Corporation and Adobe Systems Incorporated. ICC is a registered trademark of the International Color Consortium.