

PRODUCT Description
and Specifications



KODAK Professional
RFS 2035 Plus Film Scanner



The KODAK Professional RFS 2035 Plus Film Scanner delivers the high-quality image, exceptional reliability and total productivity you expect from a highly-rated scanner. This high-speed scanner combines 2K x 3K resolution with excellent dynamic range and sensitivity. It's ideal for both color and black-and-white imaging of mounted or unmounted 35 mm slides and negative film.

The easy-to-use RFS 2035 Plus Film Scanner features automatic color correction, assuring first-time scans are color balanced and correct in density and contrast. It incorporates Kodak's area array sensor technology, giving you a full-frame, 18 MB (2000 ppi) image in about 40 seconds, or a full-frame, 4.6 MB (1000 ppi) image in just 11 seconds.* Since this 12-bit per channel color scanner detects changes in lightness with 4 times finer sensitivity than a 10-bit scanner, your scans have true color fidelity and superb image detail from shadow to highlight.



"A speedy slide scanner, the RFS 2035 Plus makes acquisition of mounted and unmounted 35 mm slides or negatives nearly foolproof—and very fast. For high-volume scanning of originals that need little or no correction, this slide scanner is hard to beat."

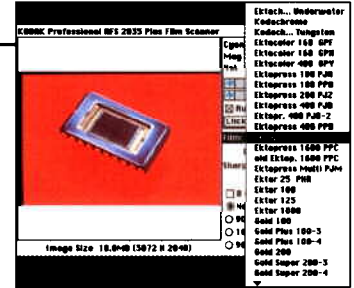
— MacUser Magazine / November 1994



Features/Benefits

- Provides automatic color correction, giving you great first-time scans with minimal effort
- Performs all critical scan functions internally and independently of your computer, maximizing productivity regardless of the computer's speed
- Scans color and black-and-white images; positive or negative
- Features custom-designed lens that delivers exceptional image sharpness
- Offers user-selectable image sharpening, increasing the perceived sharpness of a scanned image
- Provides an operator-guided autofocus feature that saves time and produces consistent, high-quality scans
- Performs automatic calibration every time you power up
- Delivers fast preview (< 10 sec), enabling you to judge color and composition quickly; the easy-to-use preview feature includes cropping, color balance and brightness controls
- The RFS 2035 Plus Film Scanner software optimizes scanning results for a wide variety of 35 mm film

The RFS 2035 Plus Film Scanner includes APPLE ADOBE PHOTOSHOP and PC TWAIN software acquire modules, enabling you to scan directly into your computer's image-editing software.



Specifications

- Accommodates 35 mm mounted or strip transparencies and negatives
- Offers any user-specified resolution up to 2000 ppi
- Produces color scans in approximately 40 seconds at 2K x 3K; approximately 11 seconds at 1K x 1.5K
- Operates with SCSI Interface
- Interface cards needed: MACINTOSH Computer—none; IBM or PC-compatible—future; Domain or ASPI-supported SCSI host adapter card
- Optional stack loader for slides is available
- Requires 8 MB RAM for MACINTOSH, IBM or PC-compatible computer (32 MB RAM or more recommended for fastest scan speeds)
- Performs automatic calibration
- Acquires 12 bits for each color channel
- Includes APPLE ADOBE PHOTOSHOP and PC TWAIN acquire modules
- Power requirement: 120V, 60 Hz, 1.0 A; 100V, 50/60 Hz, 1.0 A; 220/240V, 30 Hz, 0.5 A
- W: 13.25 in. (33.7 cm) x L: 17 in. (43.2 cm) x H: 8.0 in. (20.3 cm)
- Weighs 14 lb., 8 oz. (6.6 kg)
- CSA (NRTL/C)—certified to both U.S. and Canadian standards; TUV

Professional Marketing Services, Inc.

4802 East Ray Road, Suite #2328
 Phoenix, AZ 85044-6417
 P: 480-940-5400 F: 480-940-5488
 Email: pmsi@promarketinc.com
 Web Site: www.promarketinc.com

Eastman Kodak Company
 343 State Street
 Rochester, NY 14650

