

SilverFast™ Ai 4.x



"... a superb piece of software engineering with more than 150 different imaging functions..."



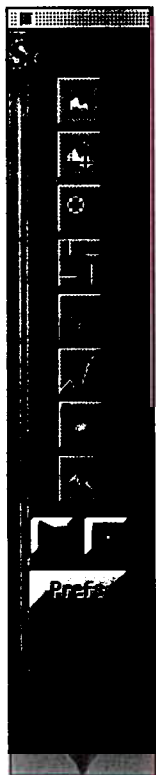
Mac OS

PowerMac/Windows 95/98/NT



MICROSOFT
WINDOWS

Digital Focus 3/98

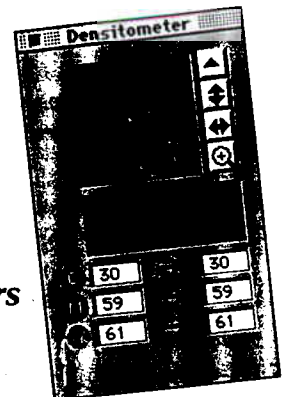


ScanPilot™

The automatic step-by-step guide through scanning. Individual adjustments always possible.

New features in 4.x

- ScanPilot™
- Selective Correction of 12 colours
- Floating windows
- Improved negative function
- IT8 Colour Calibration (optional)
- JobManagement (optional)



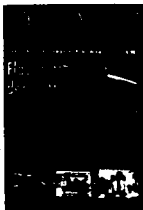
LaserSoft Imaging
SilverFast 4.x the imaging power tool

SilverFast™ reviewed:



PC Shopping, Nov. 1998

„The hottest relationship since Bonnie & Clyde. As a team the flatbed scanner ScanMaker X6 by Microtek and the scan-software SilverFast™ can't be beaten“



PrePress, Okt. 1998

„Of the scan-software known SilverFast™ positively supports most of the hardware products.“



Berliner Morgenpost, Aug. 1998

„Working with SilverFast™ you just need to click your mouse usually to get the effects you want.“

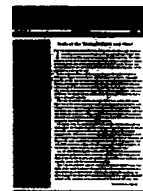


PC Magazine, Sept. 1998 (Leica S1)

„SilverFast™, a sophisticated image-acquisition software tool...“

PC Magazine, Sept. 1998

„But where the Expression 636 really shines is in its industrial-strength SilverFast™ interface, which contains extensive and extremely precise tools for fine-tuning image quality and Colour.“



Digital Focus, March 1998

„... a superb piece of software engineering with more than 150 different imaging functions...“



PEI, Photo, Electronic Imaging
March 1998

„... I have to say that this is the most sophisticated and robust plug-in I've seen...“



Electronic Imaging, Jan. 1998 (England)

„... the SilverFast/Nikon package represents excellent value for money...“



Professional Photographer Storytellers
Aug. 1998

„The perfectionist who demands the best will want to use SilverFast™ PhotoCD.“

Specifications SilverFast™ Ai 4.x

OVERVIEW

LaserSoft SilverFast™ scan software is the award-winning Photoshop™ Plug-In that provides both beginning and high-end graphic professionals with a powerful tool for optimizing scanning and Colour reproduction. SilverFast™ has a simplified user interface which is perfect for the novice, yet has outstanding Colour and scan control that experienced professionals require.

POWER AND EASE-OF-USE

SilverFast™ is a professional-level scan software that maximises the capabilities of Colour flatbed, film and drum scanners. Users can accurately preview virtually all adjustments and settings before going to a final scan. Intelligent automatic functions can also be used, or each operation can be adjusted numerically and monitored through an on-screen densitometer.

SilverFast™ allows users to scan directly into RGB, CMYK or CIE-LAB Colour space and optimizes separation tables through a three-dimensional procedure to insure high-quality separations. Users see on-screen exactly what they will receive from their output.

FEATURES

ScanPilot™: ScanPilot™ helps novice users and guides them step-by-step to the goal: the best image possible.

Selective Colour Correction: SilverFast™ contains a selective correction feature of 6 and 12 colours that is straightforward and easy to use. When users click on an image Colour, SilverFast™ automatically picks the correct Colour for manipulation. Users can then change colours graphically, through sliders or numerically. Now also with a 12er matrix.

Optimized Preview: All operations are monitored on a large, self-adjusting preview and are updated in real time.

Unlimited Undo: Eases operations and controls through unlimited undo for highlight/shadow, gradation, global and selective Colour correction, unsharp masking.

Two-level User Interface: Novice users can use sliders and intelligent automatic keys, while experienced users can employ each numerical input and on-line LAB/LCH/CMYK densitometer readings.

Powerful Automatic Key: The image automatic function uses artificial intelligence to enhance images with one-button ease. Personalised configurations can be created and saved. Image types such as sunset, portrait, jewelry and others are included.

Plug + Play CMYK: The preview reflects exactly what the user will produce when images are printed. Users can monitor Colour differences between RGB and CMYK directly in the prescan.

LAB/CMYK Optimized: Through a three-dimensional procedure designed to obtain the highest quality separations, SilverFast™ uses its own dynamic separation tables.

Unique Zoom: Users can zoom into any detail to see final scan resolutions and apply corrections to the whole image instantly by extending the scan frame.

Negative Optimization: For use with transparency adapters, SilverFast™ allows users to adjust to any type of negative film.

Multiple Simultaneous Scan Frames: Any number of parameters can be drawn on prescan frames and placed on top of each other. Just set the individual corrections on each image frame and the scanner does the rest. Scan directly to disk or hard drive for efficient batch scanning.

Unique Unsharp-Masking: A special preview acquires a small area of the final scan and shows a sophisticated before/after effect. Dark/light contour, intensity and sharpening limits can all be set by users.

Line Art Threshold Definition: SilverFast™ fast-zooms into the prescan, to allow users to quickly determine line art thresholds.

IT8 Calibration: Calibration with standard IT8 target is integrated into SilverFast (optional) to assure maximum Colour precision.

Job Management: Sophisticated management for batch operation (optional). Any get of parameters can be allocated to each individual scan frame in the batch.

Available for scanners of: AGFA, APPLE, CANON, CROSFIELD, EPSON, HOWTEK, IMACON, LINOTYPE, MICROTEK, NIKON, PFU, PRAKTIKA, QUATO, SHARP, UMAX.

SilverFast™ is a registered trademark and a development of LaserSoft Imaging, Germany. All mentioned trademarks are the protected trademarks of their companies.

PROFESSIONAL MARKETING SERVICES, INC.

PMB 28, 4802 East Ray Road

Phoenix, AZ 85044

(480) 940-5400 FAX (480) 940-5488

 **LaserSoft Imaging**