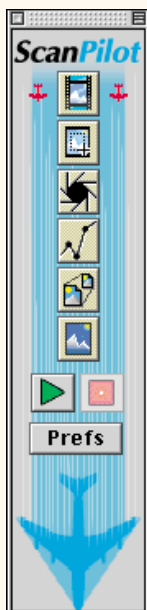
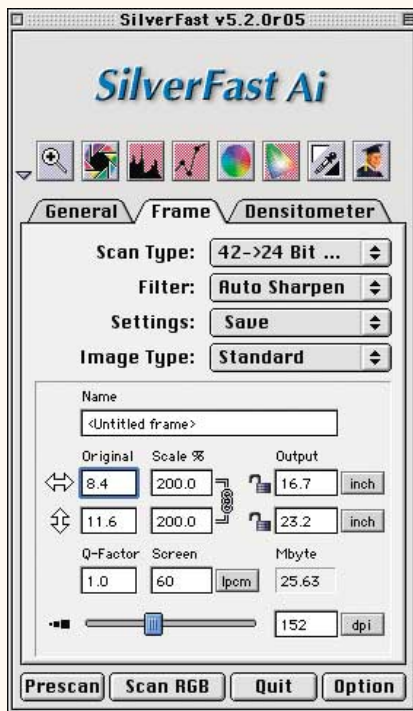


SilverFast® Ai 5

... a totally new experience beyond any imagined expectations.

Shutterbug 4/99



SilverFast 5 Highlights for Scanner and Digital Camera

- Realtime Correction
- Auto-Adjust with Artificial Intelligence
- Selective Color Correction
- 3-Part Histogram
- Color Cast Removal Slider
- Multiple Densitometer-Pipette
- Permanent CMYK-Softproof
- IT8-Calibration (optional)

ScanPilot®

"Let the ScanPilot take you to the optimum image step by step!"



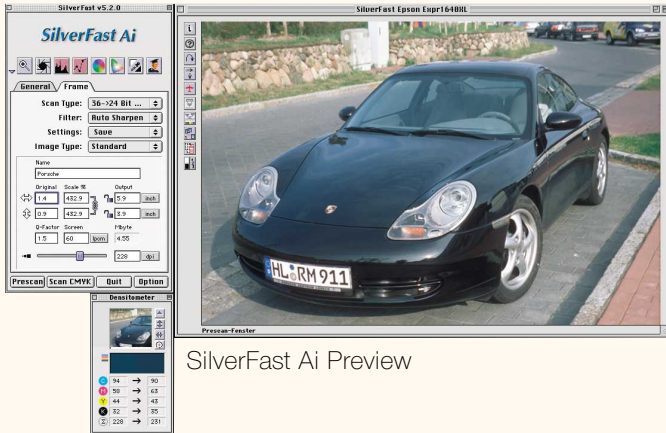
LaserSoft Imaging™



SilverFast Ai 5 brings predictable Color to Imaging

In the process of color reproduction, it has always been difficult to get an exact match between the final scan and what you see on the scan software's preview. LaserSoft Imaging has solved this problem: SilverFast Ai 5, with its

unique integration into the Adobe Photoshop color management environment, controls the end result comfortably from the SilverFast Ai preview



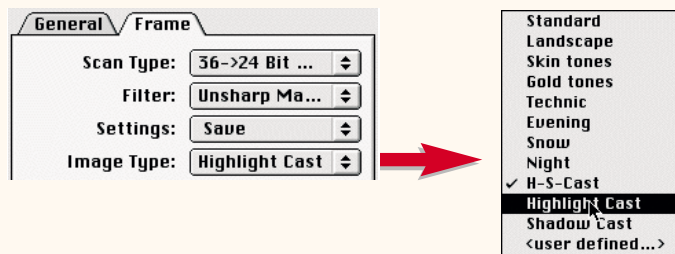
SilverFast Ai Preview



Final image scanned with SilverFast Ai

Powerful Ai Auto-Adjust

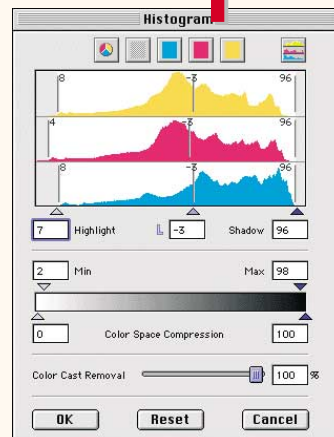
SilverFast Ai's powerful auto-adjust works with artificial intelligence and can handle the majority of tasks involving image enhancement.



The Auto-Adjust can be easily configured to any situation, as in this example, to eliminate a color cast only in the highlights of the image. Highlights min and max values can be preset under the "Option-Dialog" and adjusted to any production requirement. Whatever the reproduction task, with one click, the user can get to an optimized image quickly.

Assuring D-Max

Achieving maximum dynamic range with a scanner or digital camera is crucial for the best possible quality. SilverFast Ai works internally within 16 bit color spaces to ensure no information from the input device is lost. SilverFast Ai's settings and its unique histogram makes this objective easy.



SilverFast Ai's three-part histogram shows exactly how the image gets optimized and how a color cast is removed. The real-time control shows the undelayed resulting effects on the prescan image. The color cast removal slider can reduce a color cast to any degree.

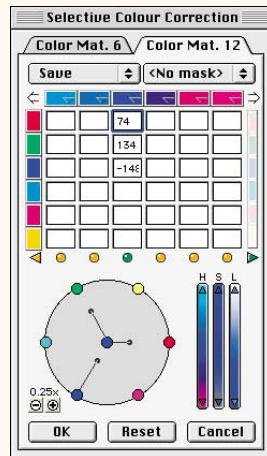
Professional Color Correction with SilverFast Ai 5



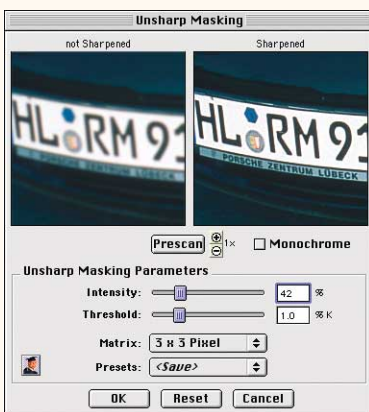
Selective color correction has always been an important tool of high-end color reproduction. It gives the operator the ability to change individual colors without effecting other colors of the image. LaserSoft Imaging has improved selective color correction, making it as intuitive and easy to use as any other tool of SilverFast Ai.

SilverFast Ai can even combine its selective color correction with "Simple Masking" to make very complex corrections possible directly on the SilverFast Ai preview. For more advanced users, up to 12 colors can be corrected.

The colors of the airplane have been changed: Open the selective color correction dialog and simply click on the color you would like to change. The color is automatically recognized and you can now change that color with the HSL-Correction or the Color Wheel into the desired color. You can see how red is changed to yellow and blue is changed to green.



Brilliant Sharpness (USM)



SilverFast Ai has the best sharpness function (USM) in imaging. Sharpness is a significant feature for brilliant images and the control has been difficult. Again LaserSoft Imaging makes it easy to see the final result in the sample dialog to the right. No more guessing, straight forward real-time control.

Integrated IT8 Calibration

IT8 Calibration is the industry standard of input calibration. SilverFast Ai has integrated the IT8 Calibration (optional) so the user can immediately run through the calibration process. SilverFast Ai's color management implementation complies with all color spaces in accordance with the highest color management standards while remaining in full harmony with Adobe Photoshop. ICC-Profiles can be generated "on the fly".





Specifications SilverFast® Ai 5

OVERVIEW

LaserSoft Imaging SilverFast® Ai scan software is the award-winning Photoshop® Plug-In (Twain also available) that provides both beginning and high-end graphic professionals with a powerful tool for optimizing scanning and color reproduction. SilverFast® Ai 5 has a simplified user interface which is perfect for the novice, yet has outstanding color and scan control that experienced professionals require.

POWER AND EASE OF USE

SilverFast® Ai 5 is a professional-level scan software that maximizes the capabilities of color flatbed, film and drum scanners. Users can accurately preview virtually all adjustments and settings before going to a final scan. Intelligent automatic functions can also be used, or each operation can be adjusted numerically and monitored through an on-screen densitometer.

SilverFast® Ai 5 allows users to scan directly into RGB, CMYK or CIE-LAB color space and optimizes separation tables through a three-dimensional procedure to insure high-quality separations. Users see on-screen exactly what they will receive from their output.

FEATURES

ScanPilot®: ScanPilot® helps novice users and guides them step-by-step to the goal: the best image possible.

Two level user interface: Novice users can use sliders and intelligent automatic keys, while experienced users can employ each numerical input and on-line RGB/CMY/ K/ LAB/LCH/CMYK densitometer readings.

Appearance Manager (only for MAC): You can change the image of the Finder and other programs by using the Appearance Manager (only if installed in the operating system). The Appearance Manager must be installed for the proper functioning of SilverFast Version 5.

Optimized preview and real time processing: All operations are monitored on a large, self-adjusting preview and are updated in real-time. Floating Windows: All windows can be placed freely on screen. If supported by OS, control-panels can be placed on a second monitor. Starting with version SilverFast® Ai 5, all image corrections such as gradation, global and selective color corrections performed by inputting or via slider are presented in the "Prescan" in real-time. This is of particular advantage in color processing, tonal values and gradation correction.

Multiple simultaneous scan frames: Any number of frames can be drawn on the prescan and placed on top of each other. Just set the individual corrections of each image frame and the scanner does the rest. Scan directly to disk or hard drive for efficient batch scanning.

Unique zoom: Users can zoom into any detail to see final scan resolutions and apply corrections to the whole image instantly by extending the scan frame.

Drag&Drop: Creating scans directly is now possible as per "Drag & Drop" in SilverFast Ai Version 5. You simply need to click-drag an optimized scan frame over the border of the prescan window and release it there.

Unlimited undo: Eases operations and controls through unlimited undo for highlight/shadow, gradation, global and selective color correction, unsharp masking.

Powerful automatic key: The image automatic function uses artificial intelligence to enhance images with one-button ease. Personalized configurations can be created and saved. Image types such as evening, portrait, jewellery and others are included.

Hottrack gradation: Starting with version 5 of all SilverFast Ai plugins, there are improved control possibilities of the curve points in the gradation dialog. If the "Command" key ("Strg" key for Windows) is pressed while dragging the curve points (track points) in the gradation dialog, the chosen curve point will automatically become active and all other curve points (except 0% and 100%) will become passive. After dragging, the original condition of the active and passive points will return to their prior settings.

Marking the condition of gradation points: The previously entered command of the individual tracking points of the gradation curve will be saved up to the next change. The condition of the active (filled in black) or passive (empty) tracking points will remain and is also available after restart.

Selective color correction: SilverFast® Ai 5 contains a selective correction feature of 6 and 12 colors that is straight forward and easy to use. When users click on an image color, SilverFast® Ai 5 automatically picks the correct color for manipulation. Users can then change colors graphically, through sliders or numerically. Now also with a 12 color matrix.

Freehand masking in selective color correction: Starting with version 5 of all SilverFast Ai Plugins, a freehand mask created with a "lasso" can be used in selective color correction. Designated areas can be marked or unmarked for selective correction in this mask. Color corrections become operational within the active designated area of the mask. They are only visible when the active designated area also touches or lies within the scan frame.

Global color correction: A modified and clearly intuitive global color correction is now available in all SilverFast Ai plugins starting with Version 5. The actual gradation curve will be superimposed upon the dialog window, making it easy to determine exactly what is happening in the gradation curve during global correction. In addition, a three-step slider has been included, which will allow adjustment for the degree of change. The bottom step allows small changes. The upper step will produce more intense changes.

Unique unsharp masking: A special preview acquires a small area of the final scan and shows a sophisticated before/after effect. Dark/light contour, intensity and sharpening limits can all be set by user.

Negative optimization: For use with transparency adapters, SilverFast® Ai 5 allows users to adjust to any type of negative film.

Line Art threshold definition: SilverFast® Ai 5 quick-zooms into the prescan, allowing users to quickly determine line art thresholds.

Editing the mid tone selector: The user can now change the values of the mid-tone. It is now possible to produce colored greys.

Multiple densitometer: Starting with version 5 of all SilverFast Ai plugins, there will not only be a single fixable densitometer measuring point available as before, but instead a total of up to 4 measuring points. The color types can be adjusted for each pipette independently of each other.

IT8 Calibration (optional): Calibration with standard IT8 target is integrated into SilverFast® Ai 5 to assure maximum color precision. With this option ICC profiles can be created. Optional embedding of ICC profiles is possible.

Color Management: Support of Mac® ColorSync®2.5+ and WIN® ICM 2.0.

Plug + Play CMYK: The preview reflects exactly what the user will produce when images are printed. Users can monitor color differences between RGB and CMYK directly on the prescan.

LAB/CMYK optimized: Through a three-dimensional procedure designed to obtain the highest quality separations, SilverFast® Ai 5 uses its own dynamic separation tables or ICC-profiles.

Permanent softproof: The prescan window can be permanently converted to a CMYK color simulation. In this way it ensures that the user can inform himself about the colors that he can choose in the text before the actual scanning. Softproof of CMYK separation plates: If Softproof has been switched on permanently, a single color separation in the prescan-window can be represented by clicking the C, M, Y or K icons in the densitometer. A double click or a click on the cumulative symbol will turn the CMYK display on again.

"Rendering intent" for ICC Profiles: "Profiles for ColorSync" now has an additional popup menu in the "CMS" tab of the "Option" dialog. Now SilverFast Ai's "Rendering Intent," which can be utilized for all ColorSync operations, can be controlled. Instead of the default setting, one of the three other Rendering Intents supported by ColorSync, such as "relative colorimetric," "saturation" and "absolute colorimetric" can be chosen.

Writing different file formats: Writes 8/12bit JPEG, EPS and DCS formats.

Multi-Sampling: Multi sampling can be utilized in regard to some scanners that show a visible, strong hissing in the shadow areas, in order to eliminate the disturbance. This function is only available for certain scanners. In this process, the scan frames will be scanned several times and then subsequently averaged to a final image.

JobManagement (optional): Sophisticated management for batch operation. Any set of parameters can be allocated to each individual scan frame in the batch.

LaserSoft Imaging GmbH / Inc. / Pvt.(Ltd) • www.SilverFast.com

HEADQUARTERS: Luisenweg 8 • 24105 Kiel • Germany • Phone +49-431-56009-0 • info@LaserSoft.de

AMERICAS: 5350 Gulf of Mexico Drive, • Longboat Key • FL-34228 • USA • Phone +941-383-7496 • info@SilverFast.com

ASIA: 26, Sir Marcus Fernando Mawatha • Colombo 7 • Sri Lanka • Phone +94-1-695215 • info@SilverFast.lk

SilverFast, SilverFast JobManager, SilverFast ScanPilot, LaserSoft, LaserSoft Imaging, are protected trademarks of LaserSoft Imaging Germany. All other mentioned trademarks, protected trademarks of their respective companies

LaserSoft Imaging™