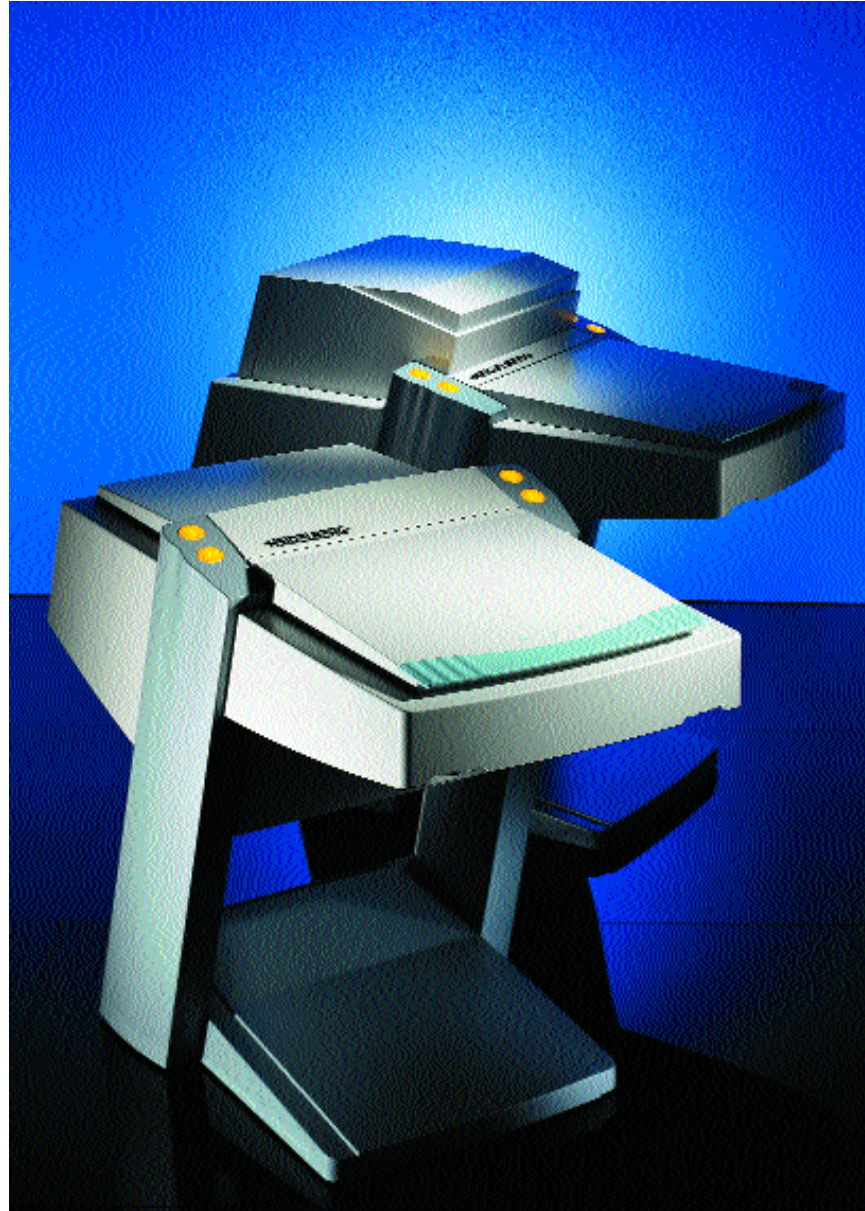


TOPAZ and TOPAZ Robot.

Professional flatbed scanners  
for all applications.





TOPAZ shines for you.

**T**OPAZ® - is the jewel of professional flatbed scanners with over 5000 TOPAZ scanners installed. Highly acclaimed in the international press and recipient of numerous international awards, the TOPAZ family is set to make you a scanning legend. Cutting edge performance, top quality and future-oriented technology are the cornerstones of its success and yours. That makes an investment in a TOPAZ scanner an investment in your future.

Professional quality.

The name TOPAZ is synonymous with quality.

The Kodak® trilinear color CCD with 8000 pixels has been specially optimized for TOPAZ.

The VariLens optical system lets you adjust the scale to best suit your needs.

With an optical resolution of up to 5080 dpi, scaling up to 2500% and a maximum resolvable density of up to 4.0 D, TOPAZ has quality stamped all over it. What's more, TOPAZ's AutoSharpening hardware performs high-quality sharpness calculations of image data on-the-fly.

All of which translates into quality you can rely on.

The all-round talent.

TOPAZ scans all types of originals -

color, black/white, line art, positive or negative. Reflective originals up to a full 12" x 18" while transparencies can be larger than 8" x 10". Originals may be up to 20 mm thick and even 3D scans are possible. Frame-mounted slides are no problem. Simply mount them on the original tray or the optional slide tray. Auto-

Focus, meanwhile, performs the focussing for you. And if you want to descreen printed originals, TOPAZ allows high-quality digital descreening while keeping the optical system in perfect focus. This means that you will never have to turn down another job again.



High productivity.

The TOPAZ scanner is controlled with a Power Macintosh™ using the proven LinoColor™ scanning and reproduction software.

This software incorporates a recognized color management system and enables you to process color intuitively.

Intelligent software assistants automatically ensure perfect scans every time.

ColorAssistant™ allows automatic image analysis while GeoAssistant™ recognizes originals automatically. Finally, JobAssistant™ performs batch and background scanning.

When using the optional rotary tray, originals inside the cassettes are angled precisely before the scan.

This means you can produce high-quality scans with simple-to-use controls right from the start.

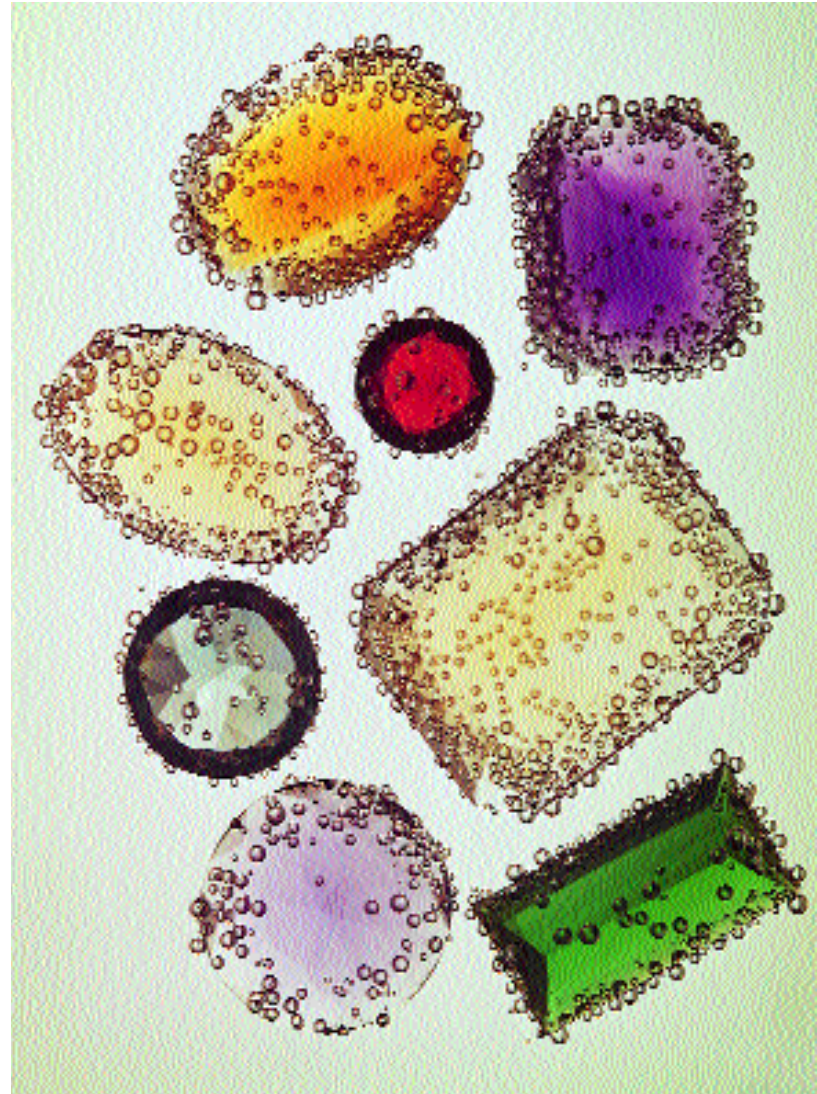
The complete solution.

TOPAZ has been designed for use in office environments. It has even won an award for its stylish and ergonomic design.

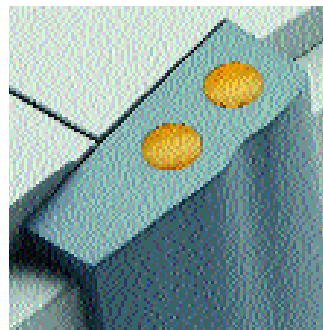
TOPAZ runs quietly and is environmentally friendly. Its low-energy concept minimizes power consumption, and all synthetic components are made from CFC-free materials which are fully recyclable. All this combined with unbeatable value makes TOPAZ a scanner you just can't refuse.

And should you wish to become more flexible and expand in the future, just take a look at the advanced features of TOPAZ Robot, TOPAZ Copix™ and TOPAZ iX.

The ergonomic design of TOPAZ makes it easy to use.



Scanned with TOPAZ:  
Transparency 4" x 5", 'Jewels'.  
Photo: Rainer W. Schlegelmilch,  
Frankfurt/Main, Germany.

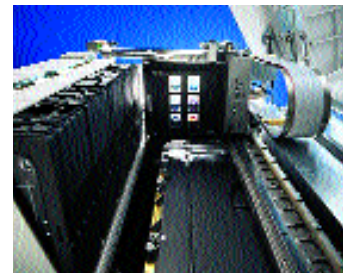




## TOPAZ Robot.

If you need to increase your productivity even further or have to cope with production surges, then TOPAZ Robot is the scanner for you. It consists of TOPAZ and a cassette robot that can hold a maximum of 225 35 mm transparencies. **Flexibility and high productivity are combined in a single scanner** for daytime and night-time operation. TOPAZ Robot also is ideal when you need to scan large volumes of originals in the shortest time possible or when you want to build up a digital image archive.

The TOPAZ Robot offers you high capacity and reliability in production.



Perfect robotic scanning.

**The sophisticated robotic system**

can hold up to 5 containers of 5 cassettes each which are fed automatically to the scanner.

Reflective and transparency originals are scanned automatically using coded passepartouts. And if you want to scan framed or unframed 35 mm transparencies in high-res, the glassless transparency cassettes make it simple. **Operation could not**

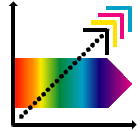
**be easier.** Simply mount the originals, insert the cassette into the container, load the robotic system and away you go. You can even interrupt the automatic job queue at any time if you want to slip in a more urgent project.

Flexible production.

You select the workflow that's best for the job at hand. For instance, you can scan in the background on one workstation, or assign individual work sequences to a number of different workstations.

Alternatively, your TOPAZ can be programmed to scan automatically without an operator. And, because the cassettes are electronically numbered, jobs can be planned off-line. That allows the **powerful JobAssistant and the integrated Cumulus® image database** to complete your production tasks.





TOPAZ Copix.

The whole world is turning digital – a fact especially true for the printing industry. And yet many customers are still supplying ads, full pages and package forms as film. TOPAZ, the professional color scanner, offers a solution. TOPAZ Copix incorporates three procedures for integrating separated film into the digital workflow.

CopyDot produces a digital copy of the screened film which can be imported directly into the page layout. The Descreen procedure descreens the films and generates a Contone CMYK data set. The LinoColor software allows you to check, correct, retouch, scale and further process your scans. For high-quality originals, a Mixed-Mode option is also available that generates the black separation with CopyDot

and color separations with Descreen. CopixAssistant™ in LinoColor automatically recognizes the screen ruling, screen angle and basic film density. In doing so, it enhances quality and simplifies operation. The digitized data are output in DCS format, with optional JPEG compression for Descreen data or CCITT-4 compression for CopyDot data, for further processing in other systems. CopixBooster™, a hardware accelerator built into the scanner, accelerates the processing speed for CopyDot and line-art data quite significantly. A scanning tray with a register system of your choice, preferably Bacher, Kodak or Stoesser register, ensures optimum register accuracy.



Creating a new menu with TOPAZ Copix: Separated films are scanned with Descreen, after which the fruit sections are color-corrected with LinoColor and transformed into a new dessert menu.

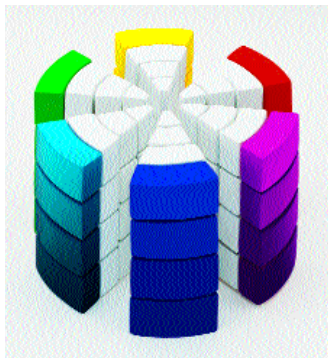




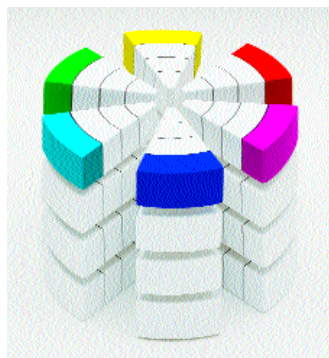
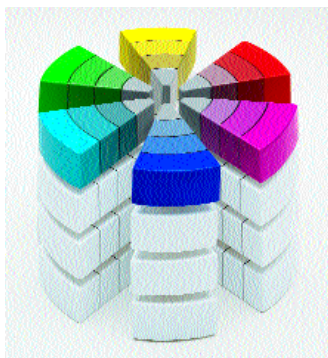
LinoColor software.

All TOPAZ scanners are controlled with a Power Macintosh using **LinoColor scanning and reproduction software** – an innovation which has proved its worth a thousand times over in the prepress sector. WYSIWYG displays allow you to **process colors intuitively as perceived by the human eye** in the form of luminance, chroma and hue. The controls are easy to learn. The tools for graphics art professionals include selective and global color image manipulation in both CIELAB and CMYK.

Greatly simplified model of the CIELAB color space. The luminance of all colors changes from the bottom to the top.



If we look closely at the individual color segments, it is possible to see how the chroma of each color increases from the center of the color space outwards.



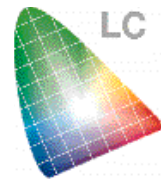
Top quality scans with a simple click.

LinoColor is equipped with intelligent assistants that ensure first-rate scans with a click of a mouse. **ColorAssistant performs automatic image analysis** complete with image setting, color cast compensation and gradation correction. **The optional GeoAssistant supports automatic recognition of originals** and job generation. **JobAssistant can automate entire workflows** encompassing scanning, analysis of the originals, sharpening, storing, outputting to printers, imagesetters or servers in a network.

Customized throughput.

TOPAZ lets you configure your workstation to suit your demands. You can respond to urgent jobs by using a **batch routine for several scans** simply by clicking the mouse. To cope with consistently high scanning volumes, the scanner can **operate in the background**, while you work in the foreground preparing the prescans for high-res results. And to achieve even greater throughput, it is possible **to assign scanning and corrective tasks to several workstations**. Or let JobAssistant make it all happen automatically.

The change in hue in the CIELAB color space is caused by the rotation around the center point.



## Color management.

Color space matching is not left to chance – **LinoColor is compatible with ColorSync® 2.** This means colors are calibrated from the initial scan right through to the final printing stage. This is done using ICC® profiles (International Color Consortium) which are generated individually for monitors, printers and other output devices by the various vendors. As the range of ICC profiles expands, **LinoColor automatically becomes more versatile** and more useful to you. Alternatively, you can take advantage of the optional ScanOpen ICC, ViewOpen ICC and PrintOpen ICC tools to generate individual ICC profiles.

## Learning by doing.

Learn and teach yourself with the **TOPAZ and LinoColor multimedia CDs.** Take a look at the advantages for yourself and see just what TOPAZ can really do. Teach yourself to use LinoColor with the aid of a simulated scanner. While both CDs are ideal for teaching entry-level users, they also provide a useful source of reference for professional users, too. Order yours today.

## Customer service.

Heidelberg can provide you with service **worldwide for your TOPAZ scanner,** including training courses, a hotline backed by a team of experts, installation, on-site servicing and, of course, software updates and hardware upgrades. If you would like to learn more, contact us directly.



The creative world of software:  
TOPAZ Multimedia,  
LinoColor Software,  
Cumulus image database.



The creative world of digital data: 'Scanning' and 'Color Management' at a glance. Available as separate brochures from Heidelberg USA.

Heidelberg USA  
Corporate Office - Atlanta  
Heidelberg USA, Inc.  
1000 Gutenberg Drive  
Kennesaw, Georgia 30144  
USA  
Phone: 770-419-6500  
Fax: 770-794-6272

Heidelberg Canada  
Corporate Office - Toronto  
Heidelberg Canada  
50 Worcester Road  
Etobicoke, Ontario M9W 5X2  
Canada  
Phone: 416-675-2700  
Fax: 416-674-6849

Internet Home Page  
<http://www.heidelbergusa.com>



Phone: 518-373-1225  
Website: [www.hdia.org](http://www.hdia.org)

©1998 Heidelberg USA

Subject to changes and modifications  
without notice.

Heidelberg, Hell, Lino, Linotype and TOPAZ are  
registered trademarks: ColorAssistant, Copix,  
CopixAssistant, CopixBooster, GeoAssistant,  
JobAssistant and LinoColor are trademarks of  
Heidelberger Druckmaschinen  
Aktiengesellschaft.

ColorSync is a registered trademark;  
Power Macintosh is a trademark of  
Apple Computer Incorporated.

Cumulus is a registered trademark of  
Canto Software GmbH.

Kodak is a registered trademark of  
Eastman Kodak Company

ICC is a registered trademark of the  
International Color Consortium.