



# LinoColor **VisuaLab** Deluxe

**Great color. You know it when you see it.** The question is, how do you produce it consistently and easily? For more and more people who produce color for a living, the answer is “LinoColor” “VisuaLab.””

LinoColor VisuaLab Deluxe software is the result of our decades of work in high-end color. We have taken our years of accumulated expertise in color image capture, processing and output, and put it all in one easy-to-use software package. The result is that even novice users of desktop publishing technology can achieve professional-quality results in an amazingly short time. Color experts, on the other hand, will quickly see that the advanced capabilities in LinoColor VisuaLab Deluxe give them the tools they need to achieve higher productivity and more accurate, consistent results.

**CIELAB: the heart of color management.** To understand LinoColor VisuaLab Deluxe, you have to understand the importance of the CIELAB device-independent color space. CIELAB enables you to capture the maximum amount of color information during the scanning process and then transfer it into any color space you want, including RGB, YCC and CMYK. This, in turn, enables you to achieve exactly the color you want, whether you're publishing to a monitor, a CD-ROM, a color printer, a proofing device, or a high-quality offset press.

**Consistent color from scan to output.** With LinoColor VisuaLab Deluxe and CIELAB, you work with color as the human eye sees it – in terms of lightness, chroma and hue. These intuitive parameters are employed in VisuaLab's LCH user interface, making operation fast and easy. Since VisuaLab Deluxe allows you to manipulate these three variables

---

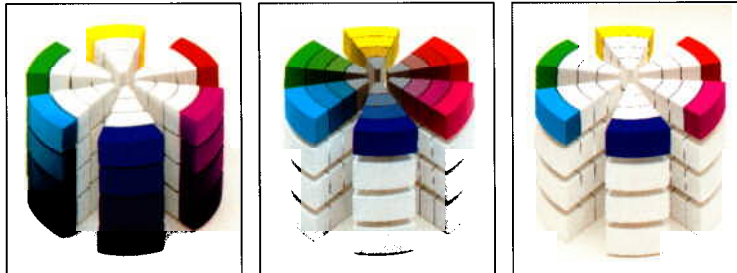
independently, it is extraordinarily easy to achieve exactly the results you want, in a fraction of the time it takes with other methods. You can, for example, increase lightness without affecting hue, or change color without losing any detail whatsoever.

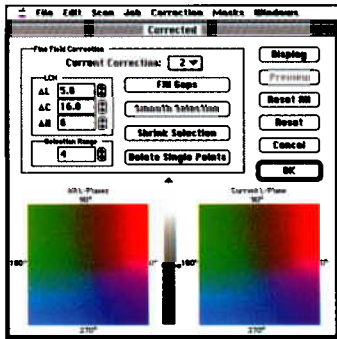
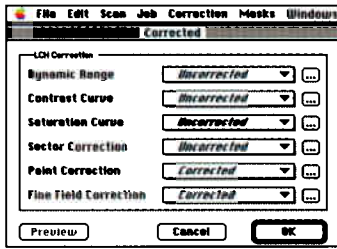
**Compatible with ColorSync.** A very important subset of LinoColor VisuaLab Deluxe is ColorSync®, a product developed jointly by Linotype-Hell and Apple®. ColorSync sets the new standard in color management at the computer operating system level, making high-quality color transformations available to everyone who uses a Macintosh® with ColorSync software.

**High productivity, too.** What you want are high-quality scans, as fast as possible, without having to understand color theory. That's exactly what you get with LinoColor VisuaLab Deluxe. For example, the ColorAssistant™ module automatically analyzes your original images. And the optional JobAssistant module helps you automate workflows, including: scanning, image sharpening, storage and output. Once your prescan images are stored, they can be accessed by page make-up workstations or other VisuaLab workstations.

In addition to providing a highly cost-effective division of labor, this workflow enables you to start your text/image integration using low-

*In CIELAB, the Luminance (left), Chroma (middle) and Hue (right) are independent of each other. You can change any one without affecting the others. To make corrections, you just change the luminance, color or hue until the image looks the way you want it. Then the image can be moved into CMYK, RGB or YCC.*





*LinoColor VisualLab Deluxe gives you complete control over all the color attributes of your image (top). For example, the fine field correction (bottom) enables you to sample areas in your image and easily move them to a different hue.*

*Detail is retained when hues are changed and even after retints – a key attribute which demonstrates the quality possible with LCH color manipulation.*



resolution images generated from the prescans. When your pages are ready for output, your OPI server automatically exchanges high-resolution data for the low-res images.

LinoColor VisualLab Deluxe's capabilities go far beyond the spectrum of conventional image reproduction operations. For example, Photo-CD™ data can be imported and large-volume image reproduction work can be split across a network and processed in batch mode.

**Color management today – and tomorrow.** The compatibility of LinoColor VisualLab Deluxe with ColorSync gives you the ability to calibrate your entire color system. And as more and more software applications, monitors and printers become ColorSync compatible, your investment in VisualLab Deluxe will pay even bigger dividends.

When you add our other color tools, such as the LinoColor Profilers, it's easy to see why LinoColor VisualLab Deluxe is the heart of a system that truly makes color child's play.

**LinoColor VisuaLab Deluxe**

<b>LinoColor VisuaLab Deluxe</b>	Image acquisition and color correction software for Apple Power Macintosh™
<b>Software protection</b>	Dongle
<b>Scope of delivery</b>	LinoColor VisuaLab Deluxe software module with ColorAssistant™ JobAssistant software module for automated workflows and networked operation Print Table Editor software module LinoPicture Includer software module
<b>Optional software</b>	LinoColor Profilers for generating Capture, Display and Print ICC Profiles
<b>Supported color spaces</b>	CIELAB, CMYK, RGB, YCC
<b>Supported file formats</b>	TIFF™ LAB, TIFF L, TIFF RGB, TIFF G, TIFF B, TIFF CMYK, TIFF YCC, PS, EPS, DCS, ICS, PICT™
<b>Devices supported</b>	ChromaGraph S 3400, TANGO, TOPAZ, TOPAZ Robot, and TOPAZ Copix Scanners, Digital Cameras

**Minimum Macintosh configuration for LinoColor VisuaLab Deluxe**

<b>CPU</b>	Power Macintosh, System 7.x
<b>RAM</b>	32 MB or more
<b>Hard disk capacity</b>	1 GB or more
<b>Monitors</b>	21" color monitor with ColorSync 2.0 (or later) profile or calibrated 21" color monitor with 24-bit video board

**Professional Marketing Services, Inc.**

4802 East Ray Road, Suite #2328

Phoenix, AZ 85044-6417

P: 480-940-5400 F: 480-940-5488

Email: [pmsi@promarketinc.com](mailto:pmsi@promarketinc.com)Web Site: [www.promarketinc.com](http://www.promarketinc.com)**LinoColor***Color is child's play.***LinotypeCPS**