

Premium Series

Since 1988, the Solitaire16 has been a proven performer for large format work for photo labs, prepress trade shops and corporate graphics departments.

Now significantly enhanced, the Solitaire16xps™ comes with an improved contrast CRT, optional on-board memory, an RS-232 port for communications, and a 30 second imaging time for slides. The Solitaire16xps is the one machine that does it all.

Consistent, High-quality Color Images

The Solitaire16xps incorporates Management Graphics' patented Digital Geometry Control (DGC)*, an all digital system that precisely manages image parameters for perfect size and alignment; saving time while eliminating guesswork. Color Look Up Tables (LUTs) support more than 68 billion colors assuring faithful color reproduction. With Colorfit™, MGI's color

LUT generation software, you can also produce your own custom LUTs for a special film type or account for processor differences. Specially designed electronics including precise beam placement and small spot size produce the cleanest, highest quality image possible. In addition, an optional buffer board provides up to 256 MB of on-board memory resulting in smooth data flow and artifact-free images.

More Formats, More Profit Opportunities

Interchangeable camera modules make it simple to use the Solitaire16xps for anything from page-size production materials to 35mm slides for A/V presentations. Professional 4"x5" and 8"x10" camera modules are available for your large format production. 120/220 size film with a 54

second imaging time per negative is perfect for portrait or people lab use. Pin registered 35mm modules along with 8"x10" bulk load and Polaroid Auto film modules are also available.

When combined with MGI's Jet Stream™ Color Image Server, the Solitaire16xps leads the field in PostScript® performance. Using a true Adobe® Level 2 interpreter, you can race through 4k PostScript slides at 30 seconds click to click (up to 120 slides per hour).

Easy Operation

Convenience and simplicity are hallmarks of the Solitaire's user-friendly

design. You are guided by a push-button control panel and an 80-character fluorescent display. Once the system is set up, the configuration is stored in permanent memory for future use. An internal microprocessor automatically readjusts settings when film modules are changed.



Keeping Your Needs In Focus

Solitaire_{16xps}

Adjusting an image has never been easier. You have the freedom to precisely control image position, image size, color, and gamma on the Solitaire16xps. The front panel provides instant access to all these controls.

The front panel also makes managing your film a breeze. The Solitaire16xps can imprint information including frame number, time, date, camera module ID, gray scale, CMY, RGB density patches and resolution outside the image area so you won't tarnish an important picture and you'll never have to

worry about misplacing your valuable film. The Solitaire16xps also offers an insertable memory card for updating and transporting color LUTs.

Total Compatibility

The Solitaire16xps is compatible with PC and Macintosh® computers, UNIX workstations, or any computer graphics system that uses GPIB or SCSI interfaces. The MGI Partner Program offers more than 30 compatible software drivers to output your files.

Ongoing Support

Regional offices and dealers in over 30 cities on four continents ensure that you are fully covered by training, service, and technical support. The Solitaire16xps is backed by the commitment and support you've come to expect from Management Graphics – the name that means quality and performance in the computer graphics industry.

Call us today at (612) 854-1220. Or FAX us your questions at (612) 851-6159.

Solitaire is a registered trademark and Solitaire16xps, Jet Stream and Colorfit are trademarks of Management Graphics, Inc.; Macintosh is a registered trademark of Apple Computer, Inc.; PostScript is a registered trademark of Adobe Systems, Inc.

* US Patent Number 4,754,334

Specifications

Addressability (3:2 aspect ratio)

2048 x 1366; 4096 x 2732;
8192 x 5464; 16384 x 10928

Number of colors

> 68 billion

Imaging speed (35mm)

30 seconds at 2K and 4K; 55 seconds at 8K

Imaging speed (120/220 format)

Negative film: 54 seconds at 2K, 4K and 8K
Positive film: 70 seconds at 2K, 4K and 8K

Imaging speed (4"x5")

5:30 minutes at 2K, 4K, 8K;
11 minutes at 16K

Digital Geometry Control (DGC)

Automatic alignment of image geometry, including focus, image size, centering, orthogonality, linearity, format, and vignette.

Power up

Automatic internal system test and calibration.

Front Panel

Image position and size, color correction, gamma control, gray scale, CMY, RGB density patches, time and date clock, status line, buffer configuration.

Camera module options

See the Solitaire Camera Module Guide for a complete list.

Recommended film types

Kodak Ektachrome 64, 100 Plus, and 200; Kodak Vericolor III (consult MGI for others)

Interfaces

GPIB, SCSI

Dimensions (HxWxD)

31 x 16 x 23 in. (79 x 41 x 58 cm.)

Weight

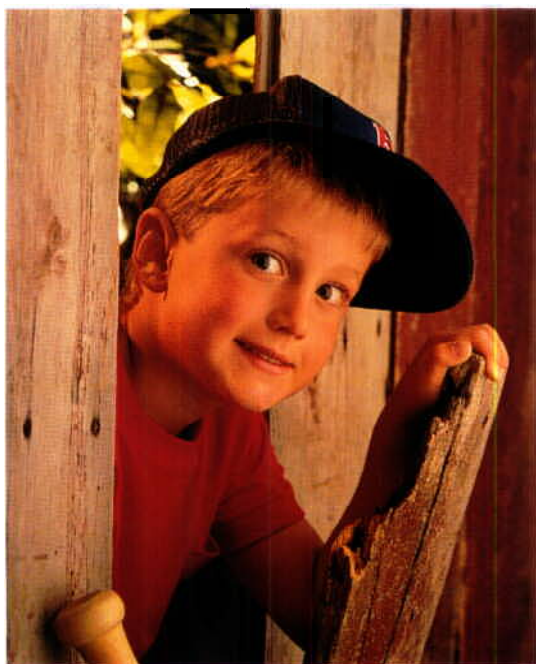
120 lbs. with carton (54.48 kgs.)

Power

110V, 50 to 60Hz (USA); 240V, 50Hz (Int'l.);
Operating Power: 300 watts

Operating environment

Temperature: 59° to 86° F (15° to 30° C)
Relative humidity: 35% to 80% (non-condensing)



Courtesy Gallop Studios/ASI, Minneapolis, MN

PROFESSIONAL MARKETING SERVICES, INC.

PMB 28, 4802 East Ray Rd., Phoenix, AZ 85044

(480) 940-5400 FAX (480) 940-5488

email: pmsi@promarketinc.com

website: www.promarketinc.com

Keeping Your Needs In Focus

Solitaire® 16xps™ Digital Film Recorder

The Solitaire® 16xps™ is a proven performer for large-format work in photo labs, prepress trade shops and corporate graphics departments.

The enhanced Solitaire 16xps comes with an improved contrast 7" CRT, optional on-board memory, an RS-232 port for communications and a 30-second imaging time for slides.

Consistent, high-quality color images

The Solitaire 16xps incorporates MGI's patented Digital Geometry Control†, an all-digital system that precisely manages image parameters for perfect size and alignment, saving time while eliminating guesswork.

Color Look Up Tables (LUTs) support more than 68 billion colors, assuring faithful color reproduction.

Colorfit™, MGI's color LUT generation software, lets you produce your own custom LUTs for a special film type or to account for processor differences.

Specially designed electronics—precise beam placement, small spot size, and more—produce the cleanest, highest quality image possible. In addition, an optional buffer board provides up to 256 MB of on-board memory resulting in smooth data flow and artifact-free images.

More formats, More profit opportunities

Interchangeable camera modules make it simple to use the Solitaire 16xps for anything from page-size production materials to 35mm slides for A/V presentations.

Professional 4"x5" and 8"x10" camera modules are available for your large-format production.

120/220 size film—with a 54-second imaging time per negative—is great for portrait or people lab use.

Easy operation

Convenience and simplicity are hallmarks of the Solitaire's user-friendly design.

A color-coded push-button menu system lets you load, unload, reverse, forward, advance, and notch film with the touch of a button.

The fluorescent display panel gives you fingertip control of image position and size adjustment, color correction, gamma control, gray scale, CMY, RGB density patches, time and date clock, status line, and buffer configuration.

The Solitaire 16xps can imprint information—frame number, time, date, camera module ID, gray scale, CMY, RGB density patches and resolution—*outside* the image area so you won't tarnish an important picture and you'll never have to worry about misplacing your valuable film.

Once the system is set up, the configuration is stored for future use. An internal microprocessor automatically readjusts settings when film modules are changed.

Programmable set-ups include scan mode, frame count, GPIB or SCSI selection, auto calibration, default film selection, slow host synchronization, film roll size, and auto frame numbering.

Total Compatibility

The Solitaire 16xps is compatible with Macintosh® and PC computers, UNIX workstations, or any computer graphics system that uses GPIB or SCSI interfaces.

The MGI Partner Program offers many compatible software drivers to output your files.

Ongoing Support

Dealers in more than 50 cities on six continents ensure that you are fully covered by training, service, and technical support. The Solitaire 16xps is backed by the commitment and support you've come to expect from Management Graphics—the name that means quality and performance in the computer graphics industry.



SOLITAIRE 16xps
Image Recorder

Solitaire[®] 16xps[™] Digital Film Recorder

ADDRESSABILITY

	Maximum	4:3 (4x5, 8x10)	3:2 (35mm)	6:4.95 (120/220)
2K	2048x2048	2048x1536	2048x1366	2048x1689
4K	4096x4096	4096x3072	4096x2732	4096x3379
8K	8192x8192	8192x6144	8192x5464	8192x6758
16K	16384x16384	16384x12288	n/a	16384x13516

IMAGE QUALITY

7" vertical CRT

High performance digital and analog circuitry

High contrast phosphor

Auto calibration by photocell-1

More than 68 billions colors

Color Look Up Tables: 12 bits per primary
36 bits total

IMAGING SPEED

	35mm	120/220 fast	4x5 slow	8x10 CP
2K/4K	:30	1:10	5:30	15:45
8K	:55	1:10	5:30	15:45
16K	n/a	n/a	11:00	15:45

Kodak Ektachrome 100 Plus film used for imaging times.

DIGITAL GEOMETRY CONTROL (DGC)[†]

Automatic alignment of image geometry, including focus, image size, centering, orthogonality, linearity, format, and vignette.

POWER-UP

Automatic internal system test and calibration,[‡] with an extensive self-diagnostics program executed at every power-up.

CAMERA MODULE OPTIONS

Solitaire 16xps supports over 10 camera modules, including 35mm, 120/220, 4x5, and 8x10. See the *Solitaire Camera Module Guide* for more information.

RECOMMENDED FILM TYPES

Kodak Ektachrome 100 Plus and Kodak Vericolor III. Consult MGI for others.

INTERFACES

SCSIANSI X3.131-1986; 3MB/second sustained
 GPIBANSI/IEEE 488-1978; 600KB/second sustained

© 1998 Management Graphics, Inc. MGI reserves the right to improve the product, and specifications are subject to change without notice. Solitaire is a registered trademark and Solitaire16xps and Colorfit are trademarks of Management Graphics, Inc. Macintosh is a registered trademark of Apple Computer, Inc. PostScript is a registered trademark of Adobe Systems, Inc. All other product brand names are trademarks or registered trademarks of their respective companies.

†-US Patent Number 4,754,334 ‡-US Patent Number 4,917,488

PHYSICAL ATTRIBUTES

Dimensions (HxWxD)31 x 16 x 23 in. (79 x 41 x 58 cm.)
without module

Weight120 lbs (54.48 kgs.) with carton

OPERATING ENVIRONMENT

Operating Temperature59° to 86° F (15° to 30° C)

Storage temperature-40° to 158° F (-40° to 70° C)

Relative humidity35% to 80% (non-condensing)

Heat generation511 BTU/hr.

Power110V, 50 to 60Hz (US); 240V, 50Hz (International)

Operating Power: 300 watts

ACCESSORIES

Colorfit[™] Macintosh-based color LUT-generation software

Dust Cone for CRT dust prevention

Custom Meshes can be ordered to fulfill your special application needs. A mesh is an array of data values used during image exposure. Consult MGI for details.

FEATURES

Buffering

Optional RAM buffer board (16-256 MB) as well as a built-in 1 MB buffer offer increased throughput capabilities.

Firmware and LUT Upgrades

Downloadable LUTs and Firmware simplify updates. Internally, firmware is stored in Flash memory.

Auto Format Change

Different camera modules and their formats are automatically recognized as soon as they are mounted on the film recorder. The status of each module (film left in roll, notch counts, etc.) is stored in Solitaire's memory.

Quick Change Sub Assemblies

The modular design means Solitaire can be quickly and easily repaired.

Slow Scan Mode

You can slow imaging speed by a factor of four to produce higher quality images on large format modules.

Auto Notching

Set strip length and leader frames between notches.

PROFESSIONAL MARKETING SERVICES, INC.

PMB 28, 4802 East Ray Rd., Phoenix, AZ 85044

(480) 940-5400 FAX (480) 940-5488

email: pmsi@promarketinc.com

website: www.promarketinc.com