

# ArtixScan™ 6000xy

High-resolution scanning anywhere on the scanbed. The power and quality of XY scanning technology at an affordable price.



## XY Scanning at a Breakthrough Price

THE ARTIXSCAN 6000XY ENABLES YOU TO CAPTURE HIGH RESOLUTION SCANS OVER THE ENTIRE SCANNING BED WITH PREPRESS QUALITY AND SHARPNESS. IT ALSO ALLOWS FOR VIRTUALLY UNLIMITED ENLARGEMENT CAPABILITY FROM 35MM TO A3 SIZES. THE AS6000XY'S HIGH DYNAMIC RANGE, SUPERIOR OPTICS AND CCD SENSOR DELIVER A WIDE TONAL RANGE OF COLOR DATA, AND PULLS OUT SHARP DETAIL FROM EXTREME SHADOW OR HIGHLIGHT AREAS. A SCANNER OF THIS CALIBER WAS ONCE ONLY AFFORDABLE TO A SELECT FEW. NOW, IT CAN BE AN INTREGAL PART OF YOUR PRODUCTION WORKFLOW.

## FEATURES

- 42-Bit Color Depth
- 2000 x 6000 dpi Optical Resolution
- 6000 dpi Maximum Resolution
- 3.7 Dynamic Range
- Templates for standard film formats
- Color Quartet™ for Microtek stand-alone scanning software with auto-stitching for large originals
- Installation & Diagnostic software
- Kodak® Q60 rx and tx calibration targets

**MICROTEK**  
Better Images Through Innovation

## SPECIFICATIONS

### Scanner Type:

Color flatbed scanner with XY mechanism and software stitching image processing

### Originals Supported:

Reflective and transparent originals up to 12"x17" / 305 x 432mm / full A3 (reflective or film - color, black and white, mounted slides, line illustrations and printed material)

### Maximum Original Thickness:

Reflective: Unlimited  
Transparent: up to 5mm or 3/16"

### Sensor Type:

Tri-linear RGB CCD, 8,000-elements/array

### Illumination:

• Fluorescent Lamps with aperture

### Interface:

Full SCSI-2

### Bit Depth:

• Color - 42-bit or 24-bit  
• Grayscale - 14-bit or 8-bit  
• Line Art - 1-bit

### Sample Depth:

14-bits per color / 42-bit color

### Dynamic Range:

3.7 D

### Maximum Interpolated Resolution:

6000 dpi

### Maximum Optical Resolution:

2000 x 6000 dpi

### Data Transfer Rate:

2 Mbytes/second

### Scanning Productivity\*:

• Fifteen 6x7cm images at 250% scaling at 300 dpi - scans per hour

\* Scanning times may depend on host computer

### Scaling:

• 20 to 2,000 %

### Environment:

• Temperature: 61-80° F (16-27° C)  
• Humidity: 40% to 70% non-condensing  
• Max. Operating Alt.: 10,000 ft. (3,048m)

### Regulatory Certification Compliance:

• Safety: UL  
• CE  
• ISO 9002

### Dimensions and Weight:

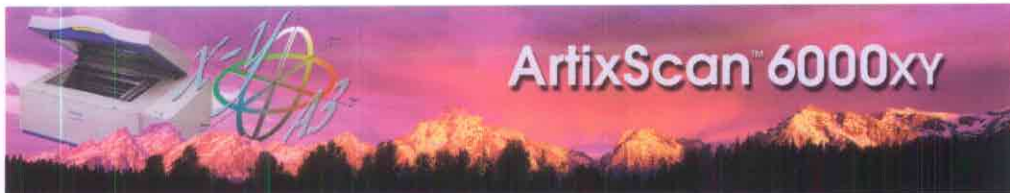
• W 34.2 x H 14 x D 24.4 inches  
• 87 x 36 x 62 cm  
• Weight: Approximately 156 lbs / 70Kg

### Power Requirement:

• Auto-switching Universal Power Supply  
• Frequency: 50 Hz to 60 Hz. 100/240V  
• Max. Power Consumption: 290 Watts

### Minimum Macintosh System Requirements:

• Apple Macintosh PowerPC, G3 or G4 class  
• 128MB RAM  
• 24-bit Color Display



# ArtixScan™ 6000xy

## Professional-Level Imaging Equipment For Your Studio.

Now you can scan all your originals in house eliminating the cost of sending out for scans. With the ArtixScan 6000xy you finally have the tools you need to produce quality scans for any prepress need. Scan film or reflective originals as small as a postage stamp to as large as 12" x 17". Or scan 3-dimensional objects — jewelry, books, fabrics, marble — whatever you need to create stunning visual effects.

## X+Y = Enhanced Capability+Increased Productivity.

Engineered to meet the production needs of digital imaging professionals, the ArtixScan 6000xy features a fast and efficient X-Y mechanism for achieving high-resolution scans from any area on the scanning bed. The AS6000xy package includes batch scan templates for standard film sizes as well as templates you can customize for your own unique sizes.

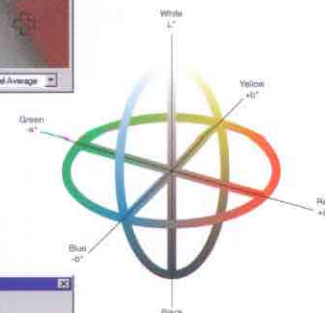
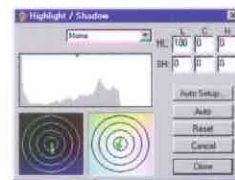
## ColorQuartet™ for Microtek

ColorQuartet for Microtek is a comprehensive yet truly flexible professional prepress software package that provides a complete scanning solution for novice and expert users alike. It's intuitive interface allows all users to maximize their results with the option of automated image correction for the novice user or high-end color control, including black generation and unsharp masking, for the professional.

This unique version of ColorQuartet is a stand-alone scanning application that features auto stitching for originals larger than 4" wide. It also features a full palette of high-level color reproduction tools, on-screen proofing, easy-to-use color

correction tools with quantitative feedback in a variety of color spaces including CIE LAB. Full color management support for ICC profiled devices ensures compatibility with third-party color output systems. In addition, ColorQuartet for Microtek's extensive workflow and job management functions provide useful multi-user/multi-platform, batch scan capability, perfect for small to mid-size service bureau environments.

ColorQuartet can be set to automatically adjust the highlight and shadow points to optimal levels for each individual image. Or the user can adjust levels manually using interactive tools in the Highlight/Shadow dialogue. This window also provides an easy, intuitive tool for ensuring perfect gray balance in the lightest and darkest parts of any image. ColorQuartet for Microtek ensures accurate results from start to finish with a full selection of output profiles (separation tables) for typical prepress applications such as commercial offset and newspaper work. All ColorQuartet profiles are ICC-compatible and can be modified in ColorQuartet or in any other program that generates ICC output profiles.



For sales information, contact:

Professional Marketing Services, Inc.  
4802 East Ray Road, PMB 28  
Phoenix, AZ 85044-6417  
P: 480-940-5400 F: 480-940-5488  
Email: pmsi@promarketinc.com  
Web Site: www.promarketinc.com

Microtek, Artix, ArtixScan of Microtek Lab, Inc.; ColorQuartet of ScanView/Parup-Eskofot. All other trademarks or registered trademarks are the property of their respective holders. Conditions and software bundles are subject to change without notice. ARTX6000/0400 / PRINTED IN THE U.S.A.

**MICROTEK**  
Better Images Through Innovation