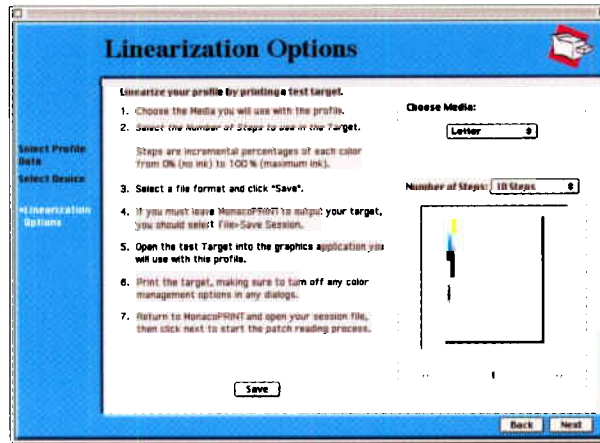


## Features and Benefits

- Creates ICC (ColorSync and ICM) profiles for accurate color from your scanner, digital camera, monitor, printer, color copier, film recorder, and proofer
- Wizard-like interface guides you through the profiling process easily and quickly
- Permits monitors to display your images accurately (soft proofing) and allows color to be displayed the same way on different monitors
- Permits digital proofing through device simulation—use your printer or copier to mimic final output!
- Provides powerful output profile controls: linearization and relinearization, ink limiting, editing, target selection of up to 914 patches, and rotating 3D gamut
- Interfaces with most standard colorimeters and spectrophotometers so you can use the quality hardware you've already invested in
- Includes a selection of commercial press and proofing system profiles
- Includes a reflective IT8 target for input device profiling

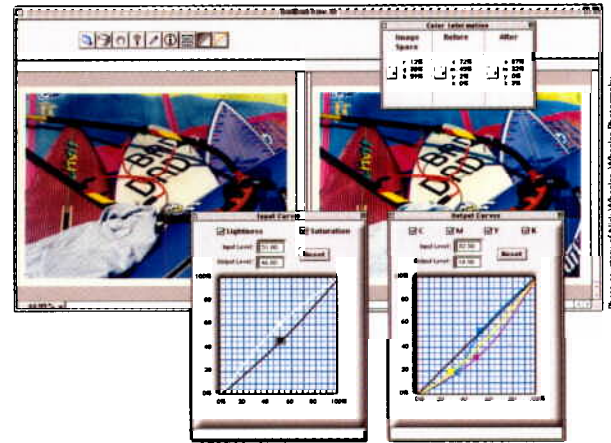


## RELINEARIZING

So you've got a great output profile, but now your device has drifted? Renew your profile quickly and easily by printing our linearization patches. With just a few speedy measurements, MonacoPROOF will analyze how your printer is currently performing and actually rebuild your profile by updating information from your original profile!

## TWEAKING

Have you ever wished you could get a little more control over your profiles? Once you've got an ICC profile to work with, MonacoPROOF will let you edit it using curve adjustments similar to those in Photoshop®. You can feel confident with your edits—our preview window displays the image accurately as you work.



## System Requirements

- CPU: Power Macintosh®, Pentium® PC or better\*\*
  - System: Macintosh System 8.1 or later; Win 95/98/NT\*\*
  - Display: Macintosh—any color monitor with a 24-bit display board; Windows 95/98/NT—any compatible video card [NOTE: Win NT 4 does not permit system-wide calibration; your monitor profile can only be used in ICC-compatible applications]
  - Software: Macintosh—ColorSync 2.5 or later
  - Memory: 40 MB RAM min (60 MB RAM preferred); 50 MB free disk space
  - Measurement Devices: Gretag Spectrolino or SpectroScan; TECHKON CP300; X-Rite DTP41 or Digital Swatchbook
- \* approximately      \*\* Windows available Q4 1999

**PROFESSIONAL MARKETING SERVICES, INC.**  
 PMB 28, 4802 East Ray Rd., Phoenix, AZ 85044  
 (480) 940-5400 FAX (480) 940-5488  
 email: pmsi@promarketinc.com  
 website: www.promarketinc.com



## Monaco Systems Solutions

### Profiling Tools



#### MonacoEZcolor

**Entry level profiling solution**  
 Great ICC profiles for your scanner, monitor, and printer... quickly, easily, and affordably. No spectrophotometer needed!



#### MonacoPROOF

**Advanced profiling solution**  
 High quality ICC profiles for your scanner, monitor, and printer. Get the quality you seek at a price you can afford!



#### MonacoPROFILER

**Expert profiling solution**  
 Professional ICC profiles for your scanner, monitor, and printer. Gain the most control over your color managed workflow.



#### MonacoMATCH

**Complete color control system**  
 Provides a complete color solution that includes MonacoPROFILER, MonacoCOLOR, MonacoMATCH, and transparent IT8 targets.

### Workflow Automation Tools



#### MonacoCOLOR

**Reliable soft proofing and image editing**  
 Color correct images and edit profiles interactively with this Photoshop plug-in.



#### MonacoBATCH

**Background batch image processing**  
 Color correct and separate multiple images in the background.



#### MonacoTWEAK

**Superior profile editing**  
 Fine-tune any ICC profile so it suits your needs perfectly. Great for generic profiles!



#### MonacoSENSOR

**Monitor profiling colorimeter**  
 Create optimum profiles by letting the sensor measure your monitor's characteristics.

### Accessories

# Color Management Solutions by Monaco Systems



## MonacoPROOF™ professional color at an affordable price

### Advanced Profiling Solution

- Builds custom ICC profiles for monitors, input and output devices
- Lets you relinearize your printer and edit output profiles
- Interfaces with most standard colorimeters and spectrophotometers
- Affordable—easy on your budget
- Intuitive, wizard-like interface

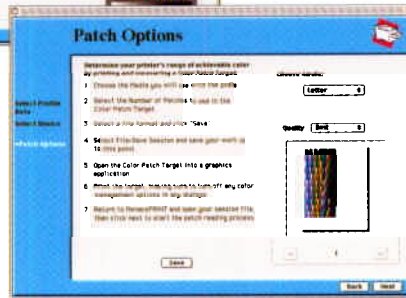
### 1 Profile your monitor



### 2 Profile your scanner or digital camera



### 3 Profile your printer, color copier, film recorder, or proofing system



Every device in your workflow handles color differently. A *profile* acts like a translator, converting color accurately from one device to another (an RGB scanner to a CMYK printer, for example).

### The results: accurate and consistent color!



Original Image



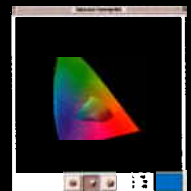
Soft Proof



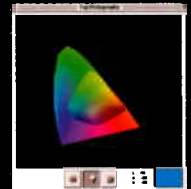
Printed Image

### POWERFUL OUTPUT PROFILE CONTROLS:

- Linearization
- Relinearization
- Ink limiting
- Profile editing
- Target selection of up to 914 patches
- Rotating 3D gamut display



Newsprint Gamut



Fuji Pictography Gamut



Matchprint Gamut

*approximately*