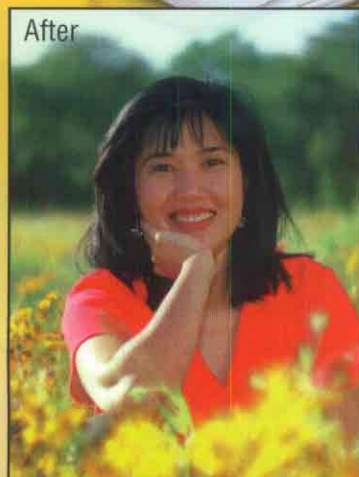
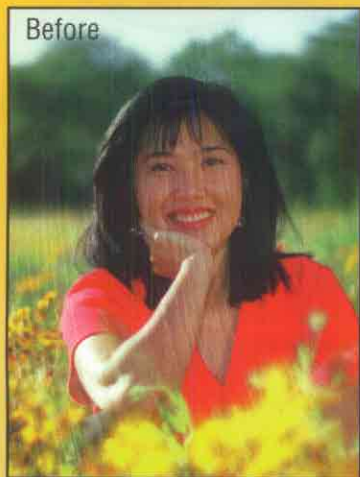


# Nikon

## SUPER COOLSCAN® 2000

### The Most Revolutionary Development In Film Scanning



Revolutionary Digital ICE™ technology automatically removes surface defects such as dust, scratches and fingerprints from scans

- Fast, with average scan times of 20 seconds at 2700 dpi optical resolution
- Dynamic range of 3.6 is highest available in a desktop film scanner
- Multi-Sample Scanning feature gives you the quality of a drum scanner on your desktop
- Nikon Color Management System provides vivid, extremely accurate color, ensures color matching on monitors and printers, and allows users to work in sRGB, CMYK, Lch and RGB color spaces
- Hot swappable adapters allows switching between film types without resetting scanner or software
- Advanced Photo System adapter available (optional)
- Unique auto slide feeder allows unattended batch scanning of up to 50 slides (optional)
- LED technology provides consistent, reliable color without recalibration
- High quality, high resolution 36 bit color images at file sizes up to 56 megabytes

# SUPER COOLSCAN 2000 Specifications:

The Nikon Super Coolscan 2000 features unprecedented color accuracy, unmatched detail and automatic removal of surface imperfections from your scans. This extremely versatile unit scans 35mm film in strip or slide formats and Advanced Photo System film. Saves hours of retouching time.

## LS-2000 35MM/ADVANCED PHOTO SYSTEM DESKTOP FILM SCANNER

### READING SYSTEM/OPTICS

<b>Film type</b>	35mm/Advanced Photo System film (Advanced Photo System adapter optional) (positive or negative, color or monochrome)
<b>Reading resolution</b>	2,592-pixel monochrome linear CCD 2,700 optical dpi
<b>Film adapter</b>	Slide mount adapter (MA-20) Strip adapter (2 to 6 frames) (SA-20) Advanced Photo System adapter (optional) (IA-20) Auto slide feeder (optional) (SF-200)
<b>Scanning area</b>	24.3 x 36.5 mm (2,592 x 3,894 pixels)
<b>Aperture size</b>	23.4 x 35.4 mm (35mm strip) 16.1 x 27.4 mm (Advanced Photo System)
<b>Illumination method</b>	Condensed and diffused light
<b>Light source</b>	RGB LED array
<b>Color separation</b>	RGB line sequential
<b>Imaging optics</b>	6 lenses in 4 groups
<b>Autofocus</b>	Contrast detection by CCD Focusing area selectable Manual focusing by software-controlled servo

### DATA TRANSFER

<b>Panel indicators</b>	READY, BUSY and ERROR status indicated by LED
<b>Scanning software</b>	Nikon Scan 2.0
<b>Interface</b>	SCSI-II, SCAM supported SCSI connector: 50-pin half-pitch x 2 SCSI ID switch: Rotary switch Terminator: Built-in active terminator
<b>Image transfer</b>	Single-pass RGB line sequential
<b>Maximum transfer rate</b>	3 MB/second
<b>Firmware</b>	User downloadable from <a href="http://www.nikontechusa.com">www.nikontechusa.com</a>

### PLATFORMS

<b>Operating Systems</b>	Mac® OS version 7.5 or better Windows® 95 or later Windows® NT 4.0 or later
--------------------------	---

### SCANNING/SIGNAL PROCESSING

<b>Image scanning</b>	CCD and optical systems driven by stepper motor Target fixed Single-pass scan
<b>Scan time</b>	Approx. 20 sec. (negative/positive)
<b>Optical density</b>	3.6 dynamic range
<b>Thumbnail scanning</b>	35mm strip film: 2 to 6 frames Advanced Photo System film: 15/25/40 frames
<b>Batch scanning</b>	Available with strip film adapter (up to 6 frames), Advanced Photo System film adapter (up to 40 frames) and auto slide feeder (up to 50 slides)
<b>A/D conversion</b>	12 bits
<b>Output data</b>	8 bits or 16 bits per color channel
<b>Multi-sample scanning</b>	Scan 4 or 16 times for reduced noise User selectable
<b>Digital ICE™</b>	Automatic removal of surface defects User selectable
<b>Color Management System</b>	Uses ICC standard profiles to color match across input and output devices

### OPERATING CONDITIONS

<b>Power requirements</b>	100 - 240 VAC, 0.3 - 0.2A, 50/60 Hz
<b>Environmental</b>	Temperature: 50°F - 95°F (10°C - 35°C) Relative humidity: 20 - 85% (non-condensing)
<b>Dimensions (W X H X D)</b>	3.4 x 5.6 x 10.8 in. (85 x 142 x 275 mm)
<b>Weight</b>	Approx. 5 lbs. (2.4 kg)

### PRODUCT NUMBER

<b>Macintosh® version</b>	9294 (SCII cable included)
<b>Windows® version</b>	9295 (SCII cable & host adapter included)



### MA-20 SLIDE MOUNT ADAPTER

<b>Mount size</b>	Width: Up to 2.0 inch (50.8 mm) Thickness: 0.01-0.13 inch (1.0 - 3.2 mm)
-------------------	---

### IA-20 ADVANCED PHOTO SYSTEM FILM ADAPTER (Optional)

<b>Film type</b>	15/25/40 frames with Advanced Photo System cartridge
<b>Loading method</b>	Automatic loading by DC motor
<b>Thumbnail scan time</b>	Approx. 80 sec. /25 frames (Max. 100 sec.)
<b>Product number</b>	9284

### SA-20 STRIP FILM ADAPTER

<b>Strip type</b>	35mm strip film with 2-6 frames (use of one frame requires slide mount adapter)
<b>Loading method</b>	Bare strip film loaded automatically by motor

### SF-200 AUTO SLIDE FEEDER (Optional)

<b>No. of slides</b>	Up to 50 slides
<b>Loading method</b>	Automatic loading by DC motor
<b>Loading/Unloading time</b>	Approx. 12 sec./slide
<b>Product number</b>	9286

Professional Marketing Services, Inc.  
4802 East Ray Road, Suite 2328  
Phoenix, AZ 85044-6417  
P: 602-940-5400 F: 602-940-5488  
Email: [pmsi@promarketinc.com](mailto:pmsi@promarketinc.com)  
Web Site: [www.promarketinc.com](http://www.promarketinc.com)