

PowerPhase

**PHASE ONE**



### Digital Photography with amazing Details and Colors

Digital capabilities with exceptional resolution, extreme light sensitivity, and outstanding image quality are now available to studio photographers, prepress houses, and other facets of digital capture. Phase One has succeeded in developing a revolutionary new digital camera back that will allow photographers to create images with amazing details and colors. The images, of more than 140 MB, make it possible to output large printed material or to crop the image using only a

small part of the total image area, but still maintaining enough information to produce an A4 / letter size print. A new patent pending system from Phase One ensures that with a PowerPhase™ solution the photographer will get the most out of today's digital technology. By offering a light sensitivity of up to 1600 ISO the system gives extra f-stops and reduces the need for light in the studio. The PowerPhase™ is based on a newly developed CCD-sensor that fits well to the size of

the film area of a Fuji camera. Photographers can therefore use all of their preferred lenses and fully concentrate on the image. The Phase One PowerPhase™ system for Fuji consists of a high-resolution digital camera back, an AR1™ general purpose filter, a TG1™ tungsten filter, sophisticated and user-friendly controlling software, full documentation, and a complete tutorial guide.

**Digital Camera Back  
For Fuji Cameras  
For Macintosh Systems &  
For Windows Systems**

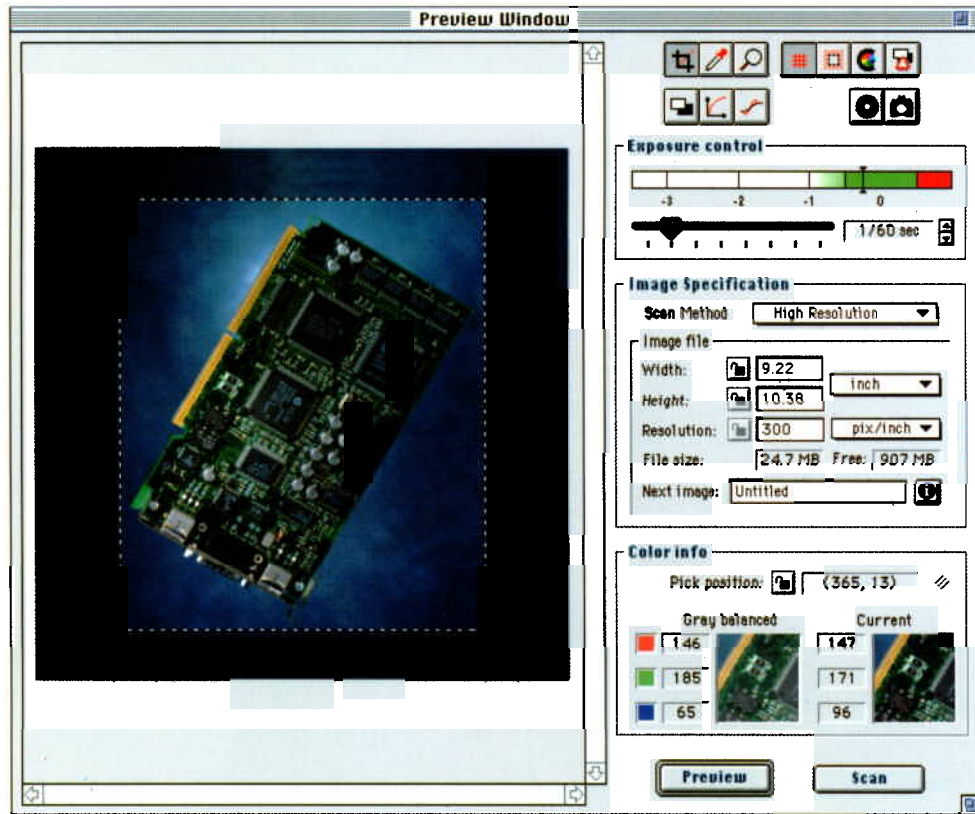
### Features and Benefits at a Glance

- Fits Fuji GX680
- Equivalent ISO of 1600 as a result of a unique Phase One system
- Resolution of 7,000 by 7,000 pixels with a total of 147 million color pixels
- 56mm by 56mm capture area that fits well to the film area
- Uninterpolated files over 140 MB produce 22" x 22" (60x60 cm) images.
- Flicker Suppression™ technology allows for the use of ordinary low wattage lighting
- Capture rates over 30 MB/min.
- Full color 15 second preview
- 36 bit internal color depth, 12 bit per color precision (generates 24 bit RGB files)
- Includes FLASH PROM for user installable updates
- Connects to Mac/PC computers via standard SCSI cable

## Image Capture Software

The enhanced version of the Phase One Image Capture Software is a very user-friendly solution, combining ease-of-use with the flexibility of sophisticated features.

- Selection between image capturing type, light sensitivity
- Easy to make daylight calibration with gray balancing feature
- Fast preview with zoom, rotation and crop masking features for exact evaluation of composition
- Preview grid feature helps to correct perspective
- Color warning in exposure preview
- Highlight/shadow values can be selected for best possible printed result
- Adjustment of contrast, brightness, and gradation curve for optimum image quality
- Image capture resolution can be selected based on output size and print quality
- Apply real time unsharp mask
- Support of Apple ColorSync 2.0 make it possible to make on-the-fly CMYK color separations



### Technical Information

#### Macintosh Version

- Power Mac Native

#### System requirements

- Power Macintosh
- 10 MB RAM (24 MB or more recommended)
- 80 MB free space (220 MB or more recommended)
- 16 bit graphical adapter (24 bit recommended)
- Connect to computer via standard SCSI cable

#### Windows Version

- Designed for Windows 95 and Windows NT 3.51
- Fully implemented 32 bit application
- Utilizes true multitasking

#### System requirements

- 486DX PC (Pentium recommended)
- 8 MB RAM (16 MB or more recommended)
- 80 MB free space (220 MB or more recommended)
- 16 bit graphical adapter

(24 bit recommended)

- Windows 95 compatible SCSI adapter (Adaptec recommended)

# ONE

Authorized Dealer

**Professional Marketing Services, Inc.**  
 4802 East Ray Road, Suite #2328  
 Phoenix, AZ 85044-6417  
 P: 480-940-5400 F: 480-940-5488  
 Email: pmsi@promarketinc.com  
 Web Site: www.promarketinc.com