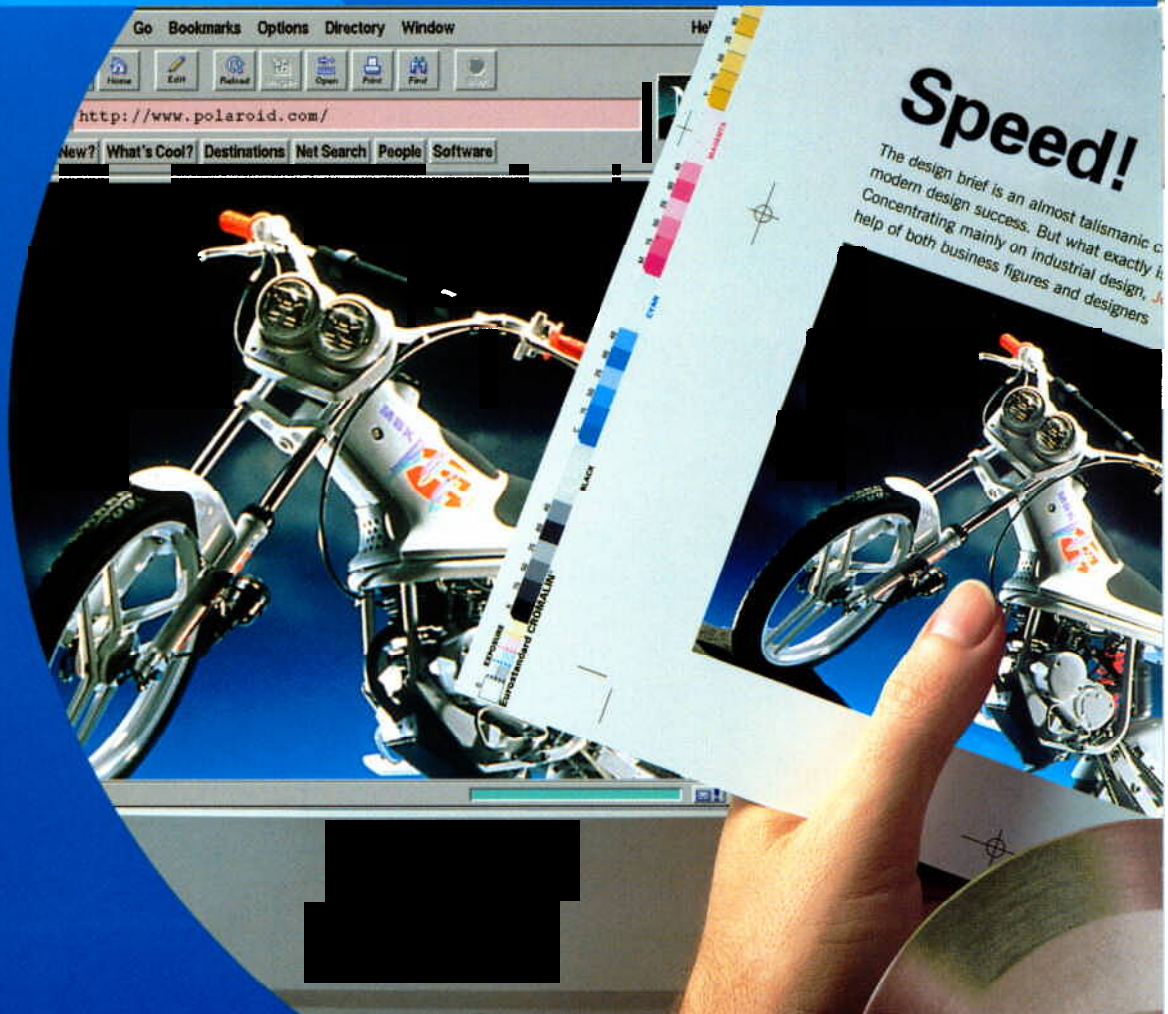


SprintScan 35



 **Polaroid**

Digital Imaging

Scan from film to file, in a Polaroid instant!



New solutions for the latest applications

The SprintScan 35 Film Scanner line now provides solutions to meet the specialized needs of a wider range of users — from designers of Internet web pages and multimedia presentations, to pre-press professionals, to digital desktop publishers and photojournalists.

Polaroid SprintScan 35mm Film Scanners are ideal for commercial graphic designers who can build incremental business by bringing customer service in-house. They are ideal for applications including image archiving and analysis, or corporate desktop publishing, where productivity and performance are key.

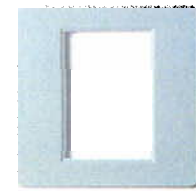
Presentation specialists in business, education, government and medicine utilize desktop scanning to produce conference-quality slides or electronic presentations. Photojournalists use the SprintScan 35 Film Scanners to capture images in the field for instant transmission and publication.

Maximize your creative control

It's easy to get detailed, color-accurate scans with any of the three SprintScan 35 Film Scanners. Just drop in the slide or insert the negative strip, point, and click. The scanner instantly scans any 35mm transmissive film media, including positive or negative, mounted or unmounted transparencies and strips.

The speed of the SprintScan 35 family assures that productivity will rise along with your image quality. Scanning at maximum resolution in *under a minute*, you can scan images at the desktop and make creative adjustments as needed.

Scanned image captured using the Polaroid SprintScan 35 Film Scanner.
Photograph by Phil Porcella.



You achieve a final scan that's ready in just minutes for 4-color separation, transmission or loading onto your web page.

An intuitive user-interface allows the user to select the appropriate film and image size settings, and the scanner does the rest. During the scanning process, color is automatically corrected and even fine details are sharpened as the data is optimized.

For more creative control, users can crop and scale the image in a full-color preview mode, and scan only the selected portion of the image. Resolution, image orientation, tone-scale, hue and color space controls also are accessible for custom user control.

SprintScan 35 scanners deliver an accurate digital representation of your original image, which is saved in standard image file formats. In less than a minute, the image is ready to be incorporated in your desktop publishing or presentation graphics application, for modification in an image editing software package or for storage in an image database.

Compatibility for any working environment

All scanners in the SprintScan 35 family are compatible via SCSI-2 interface with personal computers using either the Macintosh or Windows environments.

For Macintosh users, the scanners include an Adobe Photoshop plug-in module (PIM) which can be used with any PIM-compatible imaging application.

For Windows users, each scanner ships with a TWAIN driver for use with any TWAIN-compatible imaging application, and can be used with either Windows 3.1 or Windows 95 operating system.

Accessory film holders

In addition to scanning mounted slides, all SprintScan 35 Film Scanners are supplied with a 35mm 6-at-once strip holder. An optional, aluminum PathScan Enabler holder acts as a slide mount for 1" x 3" glass laboratory slides, allowing fast, high-resolution scanning of a wide range of tissue specimens.

SprintScan 35 Plus: Extending the standard for quality

At the top of this product line, the SprintScan 35 Plus raises the standard set by its award-winning predecessor. It samples images at 12-bits per color and delivers a 3.4 optical density range, which is the full range available in the best quality original transparencies.

With its expanded optical range and 2700 dpi true optical resolution, the SprintScan 35 Plus meets the challenges posed by design and publishing applications requiring very high shadow detail and color reproduction. It is an affordable desktop solution for final art scans for high-end printing, enlargements, or photo retouching.

For example, you can now scan 35mm images with skin tones, shadows and clothing or other items in deep, rich colors with the confidence that you have captured the true colors and details of the original image. So, it's ideal for sharp colorful image reproduction in magazines, advertisements, direct mail, catalogues, photo enlargements and anywhere it's important to show images to their best advantage.

The SprintScan 35 ES: A true original still hard at work

The SprintScan 35 ES — the original SprintScan 35 with enhanced software — offers 2700 dpi with 10-bit color and excellent shadow detail. Its technical range makes it as useful for many final art needs as it is in "For Position Only" applications.

Like all models in the line, the SprintScan 35 ES automatically calibrates before each scan to set up the gray balance, yielding consistently reliable results regardless of ambient conditions.

Polaroid's RGB CCD (Charge-Coupled Device) sensor technology captures all three colors in a single pass scan, resulting in exceptional scan speed and quality.

With hardware-based signal processing, the SprintScan 35 ES and SprintScan 35 Plus each feature image sharpening, smoothing and color corrections "on the fly," independent of the capacity of your computer. Real-time capability virtually eliminates time-consuming, post-scan image manipulation, enhancing in-house productivity.

SprintScan 35/LE: The ideal scanner for desktop and on-line publishing

While all users need high quality and speed in a film scanner, not all users need 2700 dpi resolution. Like the original SprintScan 35 ES, the SprintScan 35/LE samples images at 10-bits per color and delivers a 3.0 optical density range in under a minute.

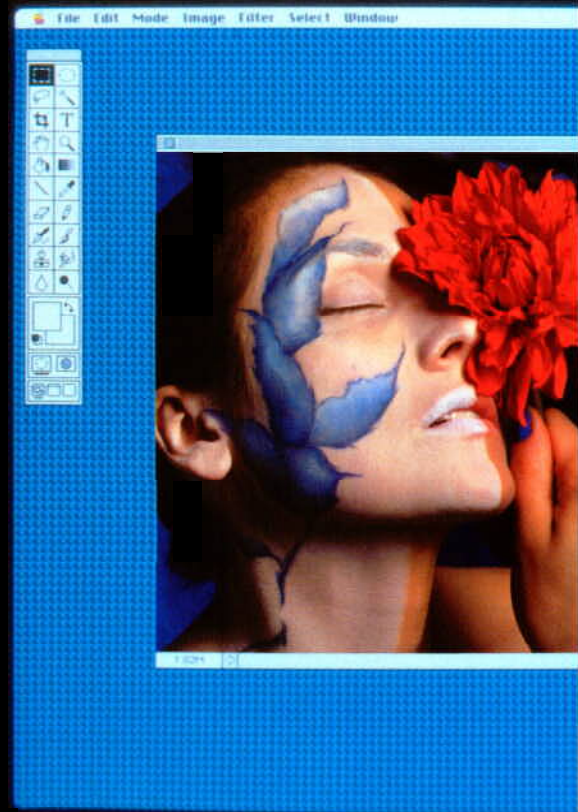
With a maximum true optical resolution of 1950 dpi, the SprintScan 35/LE is tailor-made for creators of multimedia presentations, Internet web pages and many desktop publishing documents. And, if your printing needs do not require very high resolutions or enlargements, the SprintScan 35/LE will deliver extremely suitable scans with rapid turnaround.

The affordable SprintScan 35/LE truly rounds out the SprintScan 35 Film Scanner family by providing better value for the multimedia developer or newspaper/catalog pre-press professionals, as well as for the graphic artist in small businesses or home offices.

**SprintScan 45 Multi-format
Film Scanner — for even more
scanning flexibility**

For professionals scanning multiple film formats, Polaroid also offers the SprintScan 45 Multi-format Film Scanner. This 2000-dpi model digitizes color transparencies and negatives in formats ranging from 35mm up to 4"x 5", mounted and unmounted.

The SprintScan 45 has a wide dynamic range of 0-3.4 optical density that detects a broad range of colors and shadow detail. It also captures 12 bits per color, providing 4,096 shades each of red, green and blue.





SprintScan 35 Film Scanners

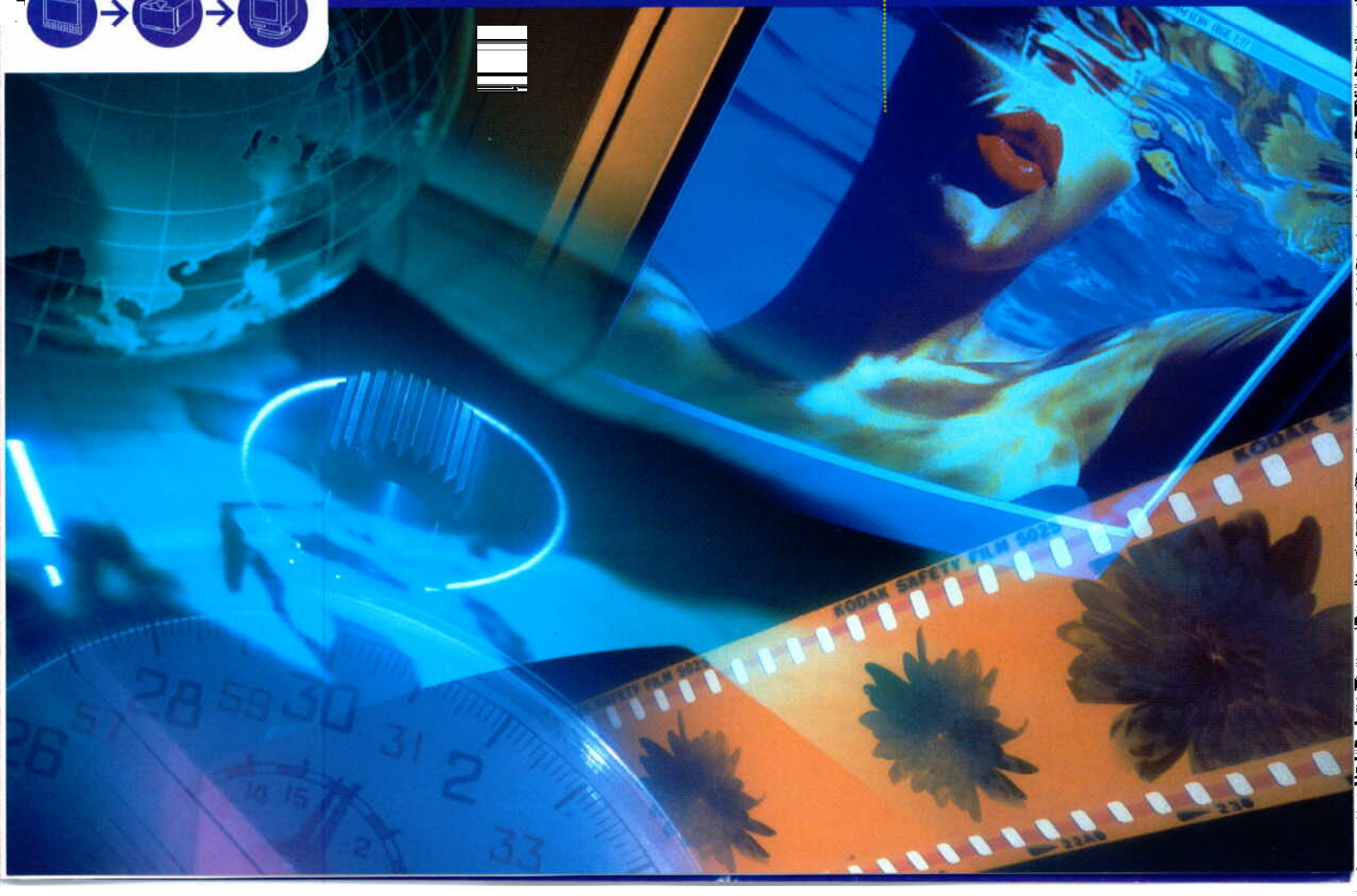
Award-winning scanner technology — Now in three superior models

With its original SprintScan 35 in 1994, Polaroid introduced a new standard for desktop scanning quality and speed. With resolution up to 2700 dpi and imaging speeds five to fifteen times faster than comparable models, the SprintScan 35 was soon adopted by graphic designers, pre-press production specialists, photojournalists, and professional service bureaus.



The desktop SprintScan 35 earned numerous accolades worldwide and quickly became a market leader.

Building on the much-acclaimed SprintScan 35, Polaroid now brings three 35mm film scanners to meet today's diverse and demanding imaging applications. Grown from a rich tradition of technological excellence, the Polaroid SprintScan 35 family now includes the SprintScan 35 Plus, SprintScan 35 ES and SprintScan 35/LE.



specifications

Film Scanners	SprintScan 35 Plus	SprintScan 35 ES	SprintScan 35/LE
Media	35mm positive and negatives, mounted and unmounted transparencies and strips; 1x3 inch glass slides with optional PathScan Enabler		
Sensor Technology	Single pass, RGB CCD		
Optical Resolution	Min: 127 dpi Max: 2700 dpi	Min: 127 dpi Max: 2700 dpi	Min: 72 dpi Max: 1950 dpi
Data Conversion	12-bit A/D conversion per RGB; 8-bit output to host	10-bit A/D conversion per RGB; 8 bit output to host	10-bit A/D conversion per RGB; 8 bit output to host
Density Range	0-3.4 OD	0-3.0 OD	0-3.0 OD
Scan Time (Typical)	Under 1 minute (varies with system)		
Signal Processing	Hardware-based, real-time color processing and sharpening	Hardware-based, real-time color processing and sharpening	Software-based color processing and sharpening
CCD Calibration	Automatic uniformity correction and dark field subtraction (dark field correction not available on LE model)		
Light Source	Fluorescent (1000 hours)		
Interface	SCSI-2 (one 50-pin and one 25-pin connector)	SCSI-2 (two 50-pin connectors)	SCSI-2 (one 50-pin and one 25-pin connector)
Power Requirements	30 W (Idle) 35 W (Scanning) @ 115 VAC 60 Hz		
Operating Voltage	Voltage: 100-240 VAC; USA:105-130 VAC; Japan:90-110 VAC; Europe:210-250 VACFrequency: 48-62Hz		
Operating Temperature	10°-40° C (50°-104° F)		
Operating Humidity Tolerance	20% - 80% (non-condensing)		
Accessory Film Holders	35mm 6-at-once film strip holder; Pathscan Enabler for 1x3 inch glass mounts (optional)		
Dimensions	5x7x10 inches (12.7x17.8x25.4 cm)		
Weight	5.5 lbs (2.5 Kg.)		
Certifications	UL, ULC (Canada), TUV, CE, FCC: Plus and LE models: Class B; ES model Class A		
Software Interface	Macintosh: Photoshop plug-in module; Windows: TWAIN module		
Warranty	1 year parts and labor		

Software Features	
Image Size Controls	Plus and ES: Crop, resize, resolution and orientation. LE: Crop and resize LE: Maximized preview size, preview rotation, remember preview Plus and ES: Maximized preview size, preview rotation, (remember preview on Windows only)
Image Adjustment	All models: Color correct, saturation, auto exposure, cast removal, sharpen Plus and ES: scene analysis for enhanced handling when scanning negatives Adjustable tone curve control, gray balance correction; auto highlight, shadow and range.
Scan Features	Scan to disk option, Scan again LE: Multiple scan job controls

Systems Requirements	
Macintosh (minimum)	Macintosh II, Quadra, Power PC or Powerbook computers (use appropriate Powerbook SCSI cable as required) System 7.0.1 or higher 12 MB RAM 8-bit color
Recommended	Power PC System 7.5 32 MB RAM 24-bit color monitor The SprintScan 35 plug-in alone requires: 2 MB additional free hard disk space 4 MB additional from the application memory (i.e., use "Get Info" to increase application memory)
Windows (minimum)	386 SX, 486 or Pentium processor DOS 5.0 or later Windows 3.1 or Windows 95 10 MB RAM 8-bit color display adapter ASPI compliant SCSI-2 interface board
Recommended	Pentium processor DOS 6.0 or later Windows 95 32 MB RAM 24-bit color

All specifications subject to change without notice.

Polaroid care and technical support

All Polaroid SprintScan 35 Film Scanners carry a one-year full warranty, and Polaroid sells a variety of extended warranties to suit individual needs.

A worldwide network of selected dealers provides specialist advice, backed by Polaroid's reputable customer care and technical support professionals.

For more information

SprintScan 35 Film Scanners are part of the Polaroid Digital Imaging family of products including digital cameras, color film recorders, printers, and LCD/DLP panels and projectors.

To arrange a demonstration of any Polaroid Digital Imaging product, call

Professional Marketing Services, Inc.
4802 East Ray Road, Suite #2328
Phoenix, AZ 85044-6417
P: 480-940-5400 F: 480-940-5488
Email: pmsi@promarketinc.com
Web Site: www.promarketinc.com

