

S
M
E
T
S
Y
S
T
U
P
I

EVER smart



EVERSMART PRO

REVOLUTIONARY FLATBED SCANNER, HIGH RESOLUTION AND EFFECTIVE PRODUCTIVITY



OPEN TO A WORLD OF COLOR

Graphic
ARTS
GROUP

EVER smart



Q

Scanning resolution reaches 8200 dpi, and scaling ranges from 20% to 2700%

EVERSMART PRO

The revolutionary *EverSmart Pro* scanner features top quality and high resolution over the entire scanner format, thereby breaking the traditional link between original size and enlargement. The *EverSmart Pro* scanner can create high-quality posters, scanned from any size originals. Up to seventy 35mm images can be scanned on the same job at high resolution. With parallel workflow and a choice of automatic or manually controlled operation, this is the full solution for every professional user.

TECHNOLOGY

The revolutionary technology includes scanning optics with motion along both the x and y axes, enabling accurate positioning of the scan head directly below the center of each original, regardless of where it is placed on the scanning area. This technology assures uniform sharpness and high resolution anywhere on the scanner format.

QUALITY

The *EverSmart Pro*[™] features high resolution across the entire format.

- Scan seventy 35mm images in one batch, all at maximum resolution and highest quality.
- Enlarge images to high-resolution posters.
- Crop a corner of any large original, and enlarge it up to 2700% without any loss in image quality.

PRODUCTIVITY

EverSmart Pro is a fast and highly productive scanner, allowing at least 20 scans per hour (6x7 cm., at 250%, 300 dpi). The parallel workflow technology facilitates simultaneous setup and scanning by a single operator. While you interactively set parameters and view the expected scan results in the foreground, the scanner captures and processes other images in the background. As you learn to maximize the abilities of the scanner, utilizing off-line mounting of user-defined masks, you will increase productivity even further. Pre defined masks, such as the mask for seventy 35mm images, allow highly efficient scanning in one session with no loss of quality.

t
Q
P
F
C

TECHNOLOGY

QUALITY

PRODUCTIVITY

FLEXIBILITY

CONTROLS

F

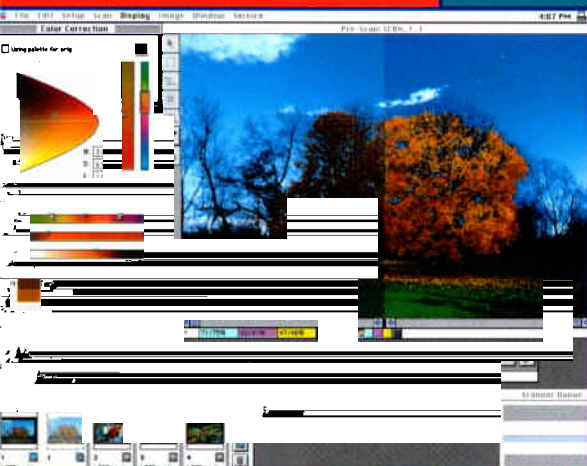


The EverSmart Pro features great flexibility in input types, including reflective, negative, color, black-and-white and lineart

を期しておりますが
交換・返品をお
料をご負担くださ
文承り後、約3-4
。(JCBカードもご利
110,000円(税別)



Color correction is available in HSL, and Split Screen allows side-by-side, before-and-after viewing



EVERSMART PRO.
JOIN THE HIGH RESOLUTION
REVOLUTION



EVERSMART PRO

TECHNOLOGY

Flatbed; CCD scanner; tri-linear, 8000 pixel, anti-blooming CCD; 2-dimensional moving scan head

RESOLUTION

8,200 dpi maximum scanning resolution over the entire format

3,175 dpi maximum optical resolution over the entire format

DENSITY RANGE: 3.7 (max. density 4.0)

COLOR DEPTH

42 bits (14 bits per color)

KEY FEATURES

- High-resolution (CT and lineart) over the entire format
- Automatic image analysis
- Parallel workflow
- CMYK, RGB and USM (Unsharp Masking) on-the-fly
- Intuitive, icon-based interface
- Array of image-editing and proofing tools, including HLS color correction and split screen
- Computer-based training
- Built-in light table

PRODUCTIVITY

20 scans/hour (6x7 cm, 250%, 300 dpi, CMYK)

SCAN MODES

CMYK or RGB, gray scale, lineart (bitmap and LW), ICC color management

INPUT

Types of originals: Reflective, transparency, negative, positive, color, B&W, lineart, printed material

Original Sizes:

Transparencies and Reflectives: up to 12 x 17 in. / 305 x 432 mm, full A3+

ORIGINAL THICKNESS

Transparencies: Up to 3/16 in. / 5 mm

Reflectives: Unlimited

FILE FORMATS

Scitex: Scitex CT™, Scitex LW™, Scitex PSImage™

EPSF: Normal, DCS, ICS, RGB, CMYK, gray scale and bitmap

TIFF: RGB, CMYK, CMY, gray scale and bitmap (Macintosh and PC formats)

PICT: RGB, gray scale and bitmap

Adobe Photoshop: Version 2.5 format CMYK, RGB

Targa: RGB

SCALING

20%-2700% at 300 dpi over the entire format

Scaling steps: 0.1%

PLATFORM (minimum requirements)

Power Macintosh computer with PCI bus and

45 Mb RAM free for scanning application

System version 7.5.3 or higher (full system,

including all system extensions)

500 Mb hard disk and CD-ROM drive

17 in. color monitor with display capability of millions of colors (24-bit color)

ELECTRICAL REQUIREMENTS

100-240 Vac, 50/60 Hz, 290 W

DIMENSIONS (HxWxD)

14 x 34 x 27.5 in. / 36 x 87 x 70 cm

WEIGHT

154 lb / 70 kg

OPERATING TEMPERATURE

61-80°F / 16-27°C

RELATIVE HUMIDITY

40%-70% non-condensing



Scitex America Corp.
Eight Oak Park Drive
Bedford MA 01730, USA
Tel: 1-617-275-5150
Fax: 1-617-275-3430

Scitex Europe S.A.
Waterloo Office Park
Drève Richelle 161
B-1410 Waterloo, Belgium
Tel: 32-2-352-2511
Fax: 32-2-351-0915

Scitex Asia Pacific (H.K.) Ltd.
8/F, Park Avenue Tower
No. 5 Moreton Terrace
Causeway Bay, Hong Kong
Tel: 852-2882-1011
Fax: 852-2881-8897

Nihon Scitex Ltd.
Forefront Tower II
3-13-1 Kachidoki, Chuo-ku
Tokyo 104, Japan
Tel: 81-3-5560-7152
Fax: 81-3-5560-7357

Scitex Middle East/Africa
P.O. Box 330
Herzlia Industrial Park
46103 Herzlia B, Israel
Tel: 972-9-9597585
Fax: 972-9-9597787

Graphic Arts Group Headquarters

Scitex Corporation Ltd.
P.O. Box 330
Herzlia Industrial Park
46103 Herzlia B, Israel
Tel: 972-9-9597222
Fax: 972-9-9502922

Visit our internet web site at
<http://www.scitex.com>

Created
With Scitex

OPEN TO A WORLD OF COLOR



Scitex, the Scitex logo, EverSmart Pro and the EverSmart logo, Scitex CT, Scitex LW and Scitex PSImage are registered trademarks of Scitex Corporation Ltd. or its wholly-owned subsidiaries, which may be registered in certain jurisdictions. Photoshop is a registered trademark of Adobe Systems, Inc. which may be registered in certain jurisdictions. Macintosh and Power Macintosh are trademarks of Apple Computer, Inc. registered in the US and other countries. Other company and brand, product and service names are trademarks or registered trademarks of their respective holders. Specification are subject to revision without notice. All images were scanned on the EverSmart Pro scanner. Pictures of sea coast, field and lone tree courtesy of Shlomo Rogalin. EverSmart Pro 0497Int10

Professional Marketing Services, Inc.

4802 East Ray Road, Suite #2328

Phoenix, AZ 85044-6417

P: 480-940-5400 F: 480-940-5488

Email: pmsi@promarketinc.com

Web Site: www.promarketinc.com

