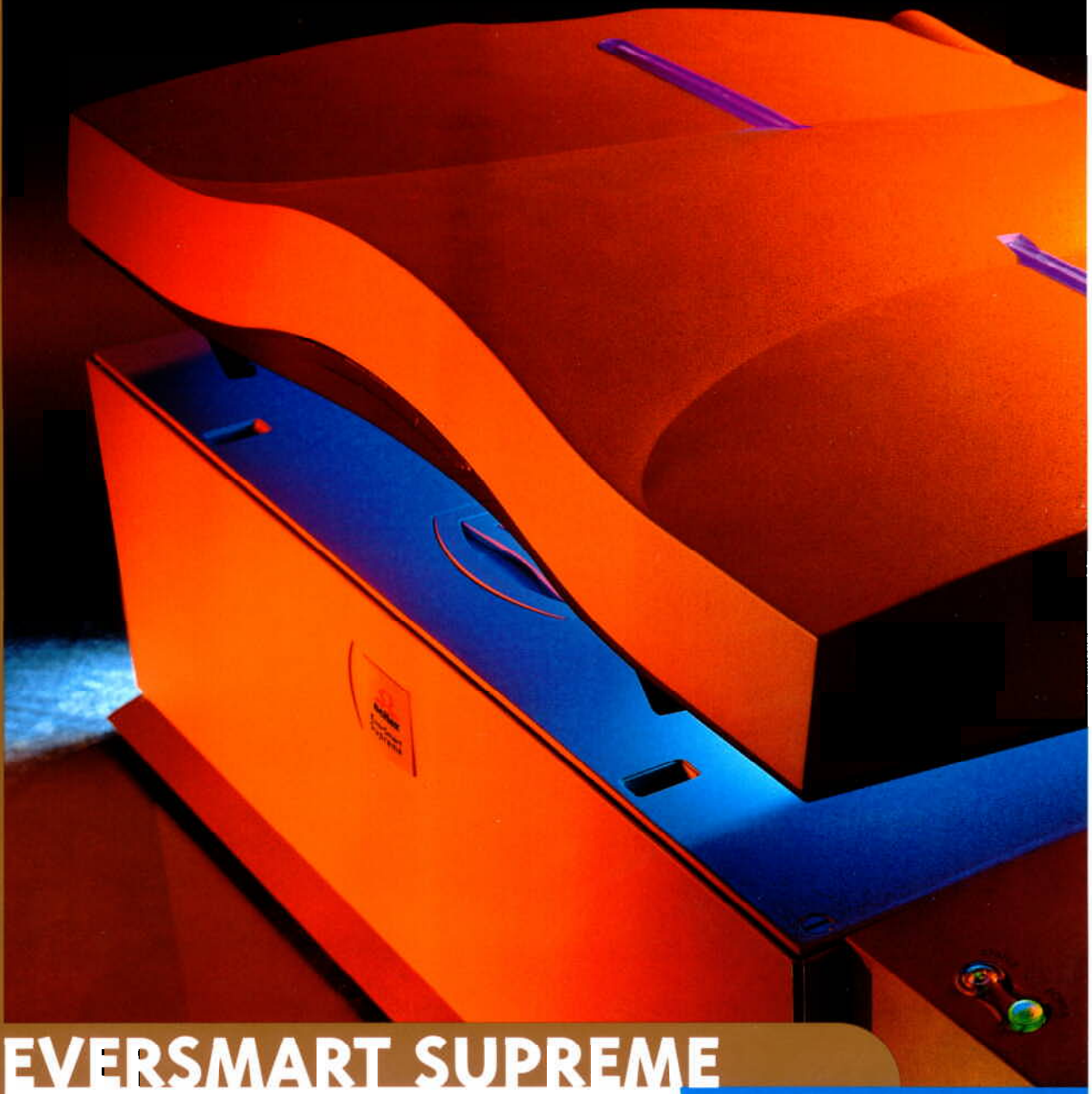


S
M
E
T
S
Y
S
T
E
M
S
T
U
T
O
R
I
E
S



EVERSMART SUPREME

INNOVATIVE SCANNER
FOR TOPFLIGHT QUALITY

OPEN TO A WORLD OF COLOR  **scitex**

**All the
Way to
PRINT**

EVER smart
Supreme

EVERSMART
Supreme



EVERSMART SUPREME

The Scitex EverSmart Supreme scanner is a step up to first-class scanning. It incorporates innovative scanning technologies, including Scitex XY Stitch, CCD Dynamic Cooling and Scitex MaxDR that together provide supreme quality, everywhere. High productivity features allow you to produce more than 50 high-quality scans in one hour. The scanner also offers complete flexibility in image size, thickness, material and format. Built with Scitex scanning expertise, the EverSmart Supreme scanner allows you to extract maximum detail from all areas of the artwork for topflight image quality.



PEOPLE

Setup Dialog

Type: Transparent Regular

Mode: Color CMYK

Format: 35mm

Media: Positive Show

Smooth: None

Crop
H: 40.00 mm W: 40.00

Scale: 250% Mirror

Scan H: 100.00 W: 100.00
Resolution TCP_Default Metal_Set Outdoor_Set

SmartSet: People_Set Save...
Still Life_Set

Tables

End Points: People.e

Gradation: G_Default

Color Table: People.c

Sharpness: People.s

Apply



METAL

OPTIMIZE IMAGE QUALITY WITH SMARTSET FEATURE

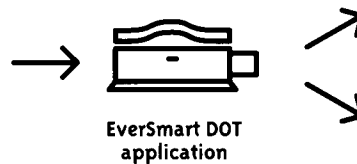
Built with Scitex expertise, SmartSet is a powerful function that automatically modifies the scanning parameters of an image according to supplied input categories. SmartSet enables you to optimize the quality of your image with a single key stroke. Once you define the correct input category – such as people, outdoor, metal or still life – all scanning parameters are updated accordingly. Image analysis, tone reproduction, gradation, sharpness and color transformations are performed on-the-fly. With SmartSet, there are no limits to creativity. You can add categories and customize the supplied tables for fine-tuning the response of your scanner.

EVERSMART DOT APPLICATION FOR SCANNING SCREENED FILMS

Screened films can now be integrated into the digital workflow with the Scitex EverSmart DOT™ application, an optional feature of the EverSmart Supreme scanner. With the EverSmart DOT application, you can scan the supplied films using two optional scanning workflows: Copydot or Digital Descreening. Using Scitex XY Stitch scanning technology, the EverSmart DOT application provides an optical resolution of 2,540 dpi across the entire board for creating perfect reproductions of screened originals.



Screened Films



EverSmart DOT application

Select a category, such as People or Metal, and SmartSet will automatically set the scanning parameters for creating a rich and vibrant image.

COPYDOT

Four high-resolution pre-separated files and one low-resolution placement file

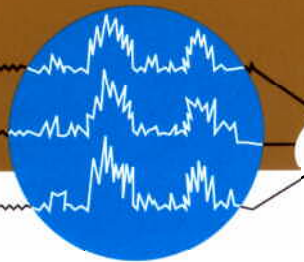


Digital Descreening

One combined continuous tone (CT) file and a low-resolution placement file



EVER smart
Supreme



MaxDR



Multiple sampling is performed on each line of an image, with the same line being sampled three times, or more. The samples are then averaged to produce high-quality data, resulting in a cleaner, sharper image.

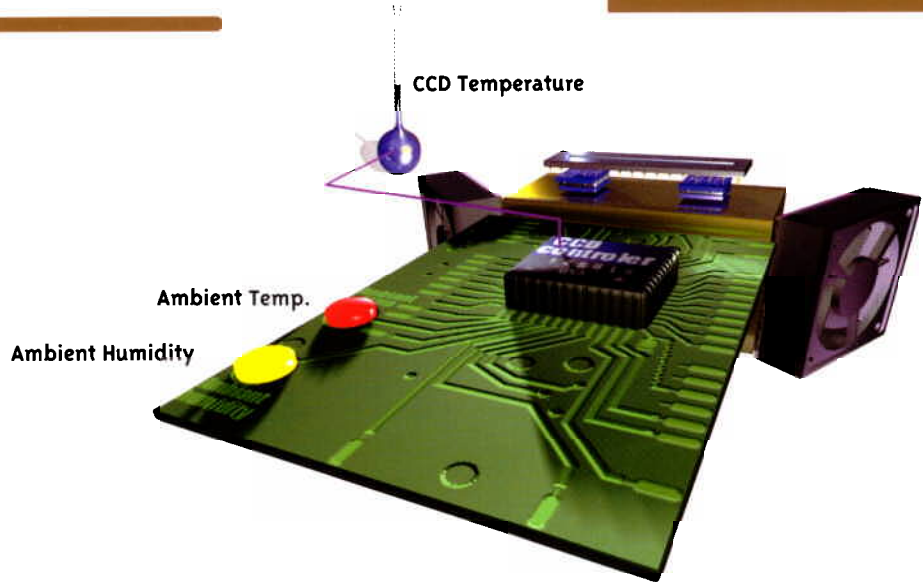
INNOVATIVE SCANNING TECHNOLOGIES FOR SUPREME QUALITY

Scitex XY Stitch™ scanning technology — provides high resolution and sharpness over the entire scanning format for any size original. With the scanner head moving along the X and Y axes, each image is scanned optimally. High image quality is maintained even with large originals. For example, an 8x10 inch image is scanned in several strips at a record-breaking optical resolution of up to 5,600 dpi to capture maximum information. Stitching is performed on-the-fly to further increase productivity.

CCD Dynamic Cooling system — By optimizing the sensitivity of the CCD, dynamic cooling enables the scanner to better differentiate a wide range of color tones. While continually monitoring the ambient temperature and humidity levels, the Dynamic Cooling system actively cools the CCD to maintain it at its optimum temperature. This process results in top-quality images with maximum detail everywhere.

Scitex MaxDR™ — The quality of an image can be improved even further with Scitex MaxDR (Maximum Dynamic Range). This technique distills high-quality image data from additional scanned data to improve the dynamic range in dark to mid-tone areas.

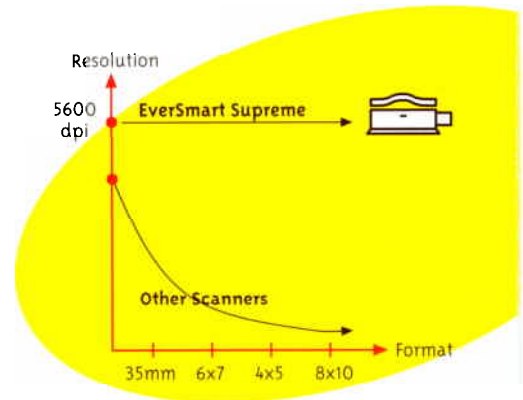
The CCD Dynamic Cooling system together with the Scitex MaxDR feature produce a record maximum density value of 4.3 for superb shadow detail.



Together, thermo-electric coolers, cooling plates, fans and a cooling control board actively cool the CCD to maximize its sensitivity.

POWERFUL FEATURES FOR HIGH PRODUCTIVITY

The EverSmart Supreme scanner excels in productivity. Parallel workflow technology enables you to interactively set parameters for the previewed image in the foreground, while the scanner captures and processes other images in the background. With the EverSmart Supreme scanner, more than 50 high-quality scans can be performed in one hour. Moreover, Scitex XY Stitch scanning technology provides full-board productivity, enabling you to scan up to seventy 35mm images in high resolution all in one job.



Regardless of original image size, the EverSmart Supreme scanner provides a consistently high resolution for uniform sharpness and quality. Since other scanners cannot perform stitching they use zooming, causing resolution to drop drastically when image size is increased.



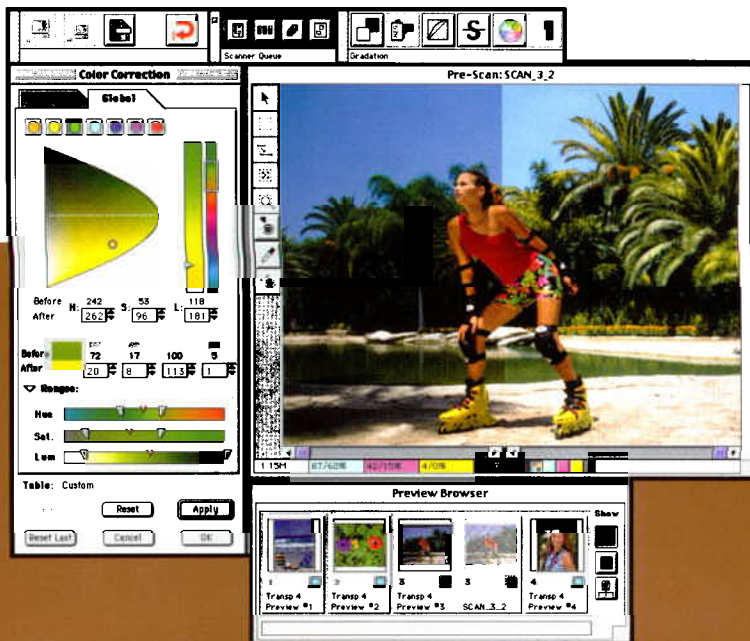
FLEXIBLE WORKFLOW FOR MAXIMIZING SCANNER PERFORMANCE

All input types can be scanned with the EverSmart Supreme scanner: transparent and reflective, positive and negative, color or black-and-white, printed material, lineart, framed slides and screened films. In addition, the scanner offers complete flexibility in image size, thickness, material and format. The EverSmart Supreme scanner supports all types of common scanning workflows: CMYK for printing and RGB for second generation images, archiving and online screen applications. ICC is fully supported for working in color management environments.

PROFESSIONAL IMAGE-EDITING AND PROOFING TOOLS FOR FULL CONTROL

The EverSmart Supreme application provides an intuitive, workflow-oriented interface for facilitating image control. A host of scanning controls, such as end points, global and selective color correction, as well as sharpness, gradation and gray controls offer several levels of operation, helping you achieve the exact results you want. These tools are available in all scanning modes, including negative.

Several soft proofing features improve output predictability. These include a Split Screen feature, which allows side-by-side, before-and-after viewing of an image, sample points control and a screen match capability.



Global and selective color correction features enable you to modify an entire color group or specific colors in selected areas using Hue, Saturation and Luminance (HSL) tools.



EVERSMART SUPREME SPECIFICATIONS



Technology

Scanning Technology: Flatbed CCD scanner; Tri-Linear 8000-element, anti-blooming CCD; up to 67,100 pixels per line
Scitex XY Stitch scanning technology
CCD Dynamic Cooling system
Scitex MaxDR function

Illumination: Specially designed, high-intensity 32 W fluorescent lamps; tailored to CCD spectrum response

Size Independent Resolution

Maximum scanning resolution: 14,000 dpi over the entire scanner format
Optical resolution: 5,600 x 14,000 dpi over the entire scanner format

Density & Color Depth

Maximum density: 4.3
Color depth: 48 bits (16 bits per color)

Productivity

Scans per hour: At least 50

Input

Scanning area: 305 mm x 432 mm
Original types: Transparent (positive and negative), reflective, framed slides, lineart, printed material, halftone screened films
Maximum original thickness: Reflective — unlimited
Transparent — 5 mm

Output

Scaling (at 300 dpi): 20%-4660% for any size original
Scan modes: CMYK, RGB, gray scale, lineart (bitmap & LW), ICC for color management
File formats supported: **Scitex:** Scitex CT™, Scitex LW™, Scitex New LW™, Scitex PSImage™
EPSF: Normal, DCS1, DCS2, ICS and bitmap
TIFF: RGB, CMYK, CMY, and bitmap
PICT: RGB and bitmap
Adobe Photoshop™: CMYK

Platform Requirements (minimum)

Apple Power Macintosh (G3) — 300 MHz
Apple Macintosh System version 8.1 or higher
64 Mb of available memory (RAM) for scanning application (not including memory for system software)
500 Mb internal hard disk
24-bit color display
17" monitor

Electricity Requirements

Input power voltage: 100-240 Vac : 50/60 Hz — Automatic voltage selection
Power consumption: 290 W — operation
200 W — standby

Dimensions (HxWxD)

Weight: 14 x 34 x 275 in. / 36 x 87 cm x 70 cm

Environment

Operating temperature: 61-80° F / 16-27° C
Humidity: 40%-70% non-condensing
Acoustic noise level: 50 dBA — operation
45 dBA — standby

Specification Conformance

UL, CSA, CE, ISO 9002

SCITEX X
FINAL TOUCH
INCLUDED



OPEN TO A WORLD OF COLOR



Scitex, the Scitex logo, the taglines OPEN TO A WORLD OF COLOR and ALL THE WAY TO PRINT, EverSmart, EverSmart Supreme, EverSmart Pro, EverSmart DOT, the EverSmart logo, Scitex XY Stitch, Scitex MaxDR, Scitex CT, Scitex LW, Scitex New LW and Scitex PSImage are trademarks of Scitex Corporation Ltd. or its subsidiaries and may be registered in certain jurisdictions. Macintosh and Power Macintosh are trademarks of Apple Computer, Inc., registered in the USA and other countries. Photoshop is the trademark of Adobe Systems Incorporated, is registered in the U.S. Patent and Trademark Office and may be registered in other jurisdictions, as well. Other company and brand, product and service names are trademarks or registered trademarks of their respective holders. Data subject to revision without notice.

EverSmart Supreme 399251979A En 9/98
EverSmart Supreme 399251108A US 9/98

Professional Marketing Services, Inc.
4802 East Ray Road, Suite #2328
Phoenix, AZ 85044-6417
P: 480-940-5400 F: 480-940-5488
Email: pmsi@promarketinc.com
Web Site: www.promarketinc.com

**All the
Way to
PRINT**