



iQsmart Scanners

High-resolution, high-productivity
flatbed scanners
sharper, faster, smarter

- iQsmart³
- iQsmart²



creo[™]



iQsmart Scanners

sharper, faster, smarter.

Introducing iQsmart™ from Creo—a new line of scanners that sets new standards for versatile, high-resolution, high-productivity scanning. The family of compact iQsmart scanners provides a combination of consistently sharp images, automation and ultra high-productivity to streamline and accelerate your scanning workflow. Featuring a range of smart and advanced scanning technologies, iQsmart meets the challenging needs of today's imaging professionals at an affordable price. Sharper, faster and smarter, iQsmart scanners are designed to be the imaging center of a growing graphics business.

XY Stitch scanning technology delivers consistent sharpness and resolution with every scan
Based on Creo XY Stitch scanning technology—the industry benchmark for uniform precision and sharpness—iQsmart scanners scan

any size original at the highest resolution across the entire scanning bed. Moving on both x and y axes, the scan head is positioned directly below the center of each original. This assures consistent sharpness and resolution regardless of where the original is placed on the scanning area. With an optical resolution up to 5,500 dpi, and a maximum enlargement capability of up to 3,300%, XY Stitch gives you the creative freedom to produce poster-sized scans, with no reduction in image quality.



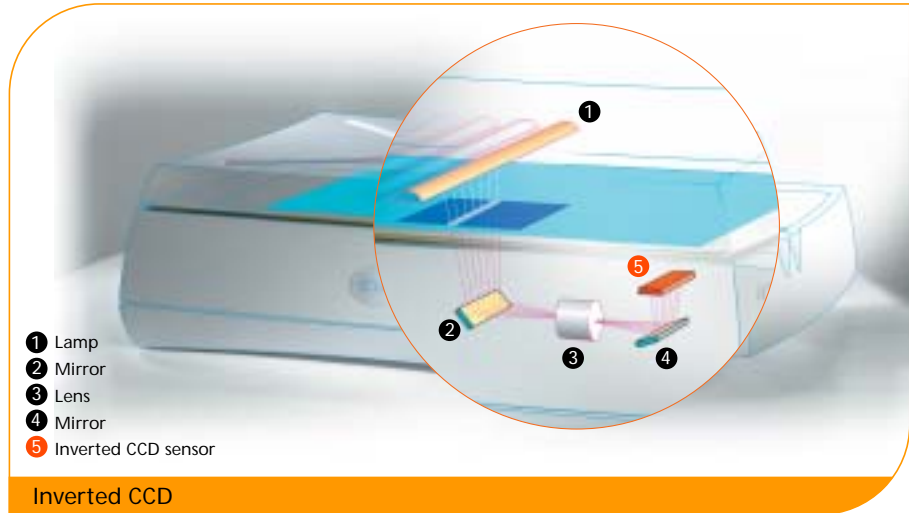
iQsmart scanner

Compact iQsmart scanners occupy far less space than other professional flatbed scanners

Inverted CCD

increases scan quality and productivity

iQsmart scanners virtually eliminate a major source of image degradation, with the Creo Inverted CCD—an innovative and uniquely mounted CCD that prevents fine dust particles from settling on the CCD surface. The Inverted CCD dramatically improves scanning performance, reduces the time wasted on rescanning originals, retouching scans, and cuts service requirements. The combination of XY Stitch and the Inverted CCD provide consistent quality through shaper and cleaner images.



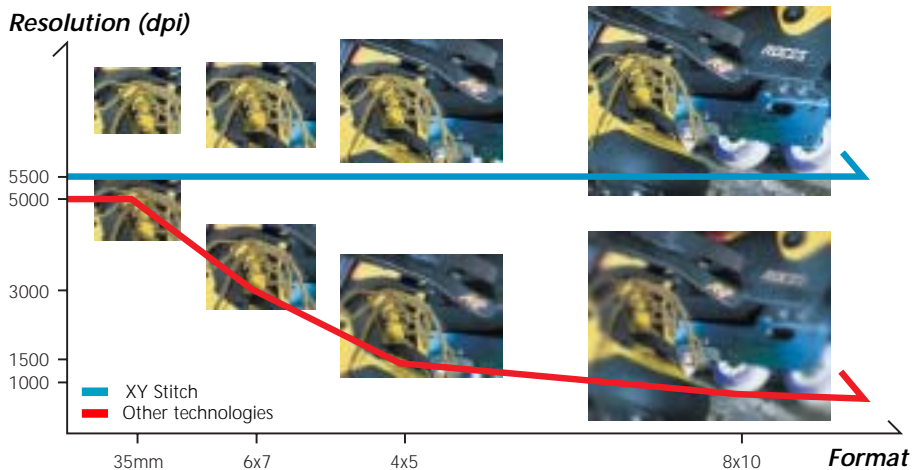
Parallel workflow maximizes your productivity potential

Despite their compact size, iQsmart scanners are built for maximum productivity and a demanding workload. You can scan up to 56, 35mm slides in one job, and run up to 40 scans an hour. iQsmart³ parallel workflow means virtually

no “dead time” lost to setup: while the scanner captures and processes one scan, the operator has full access to the scanning software to preview and set up the next scan. Easy operation means everyone gets top-quality scanning results from day one.

iQsmart intelligence and automation mean speed and efficiency

iQsmart scanners are packed with advanced, intelligent features that make them faster and simpler to use, for everyone from trained professionals to novices. Once originals are placed on the scanner, the oXYgen scanning application automatically identifies and previews the size and appropriate cropping area of the image. Intuitive, easy-to-understand presets give you professional results quickly—you determine the scan’s intended use, and the software sets the parameters accordingly.



XY Stitch scanning technology

XY Stitch assures high resolution, consistent sharpness and quality regardless of original size. Since other scanners cannot perform stitching, they use zooming, causing resolution to drop drastically as image size is increased.



LS Curve

LS Curve feature provides complete control over luminance and saturation, for precise color correction.

iQsmart Scanners

(cont.)

Vibrant 16-bit color and high dynamic range bring your images to life. iQsmart scanners meet all professional scanning needs for high image density and vivid color. Featuring complete flexibility in image size, thickness, material and format, iQsmart scanners accom-

modate outside enlargements, books, packages and more, with outstanding results. Scan for all types of workflows and output devices, including true 16-bit color, CMYK, RGB, and online applications. Thanks to ICC color management, you get consistent color

across the workflow, offering complete predictability. ICC output profiling enables you to preview the scan results on the output device, fine-tune the scan to perfectly meet your needs and get the results you want—first time and every time.







iQsmart³ Scanner

quality, versatility, speed and automation



iQsmart³ scanner

Top of the iQsmart line, the iQsmart³ scanner is geared for professionals requiring top quality results within an efficient, versatile workflow. In addition to the cutting-edge technologies that denote the iQsmart family—XY Stitch technology, Inverted CCD and true

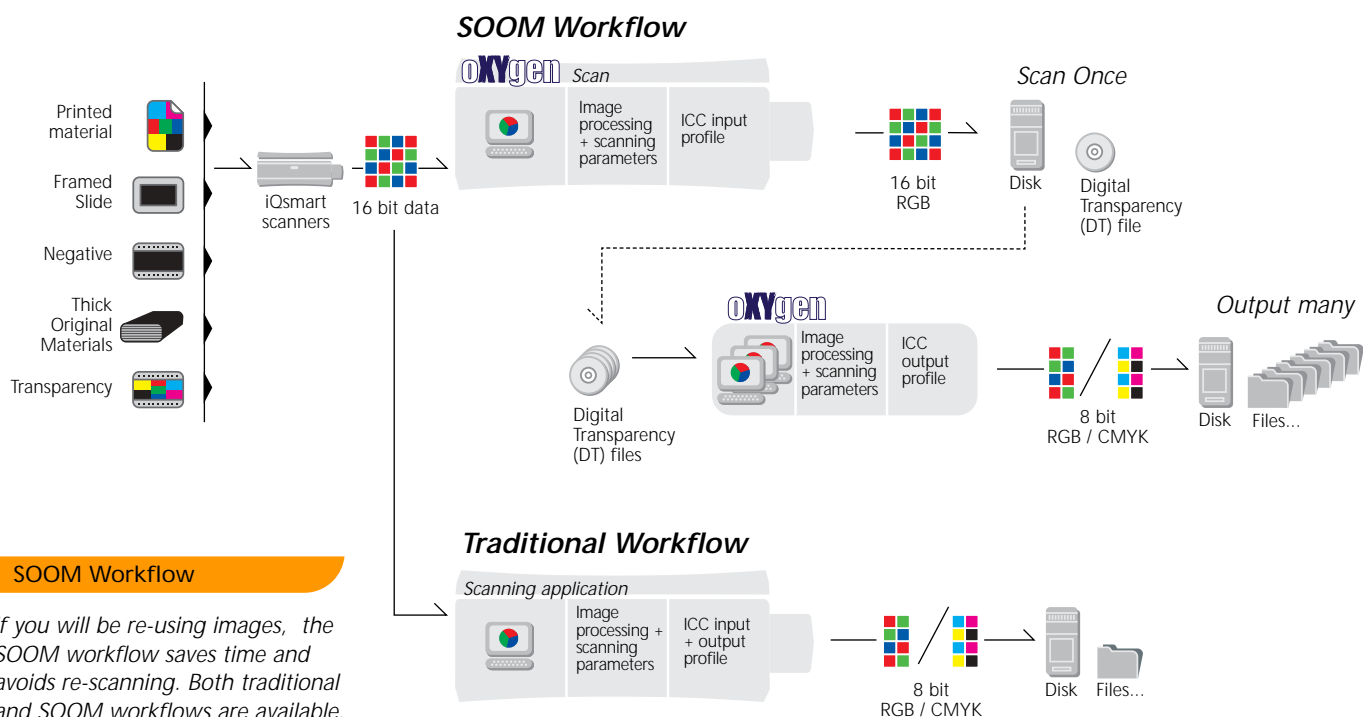
16-bit color—the iQsmart³ offers the highest resolution, a larger scanning bed and the Scan Once, Output Many (SOOM) workflow. Productivity can be extended with offline image processing via the optional oXYgen Open software. The optional oXYgen DOT Solution

brings superior copydot scanning to the iQsmart³. There is no other scanning solution in its price range that comes close to the iQsmart³ in versatility, quality and consistency.

oXYgen scanning application powerful, flexible and easy to use oXYgen is the premium scanning and image-editing application from Creo, developed to deliver maximum productivity and imaging

potential. Its intuitive controls, automation and intelligent default settings put imaging power in the hands of novices and experienced professionals alike. oXYgen quickly and effortlessly guides operators

through the process of creating sharp, dynamic images from the broadest variety of input sources, for the largest selection of output requirements.



SOOM Workflow

If you will be re-using images, the SOOM workflow saves time and avoids re-scanning. Both traditional and SOOM workflows are available.

iQsmart³ Scanner

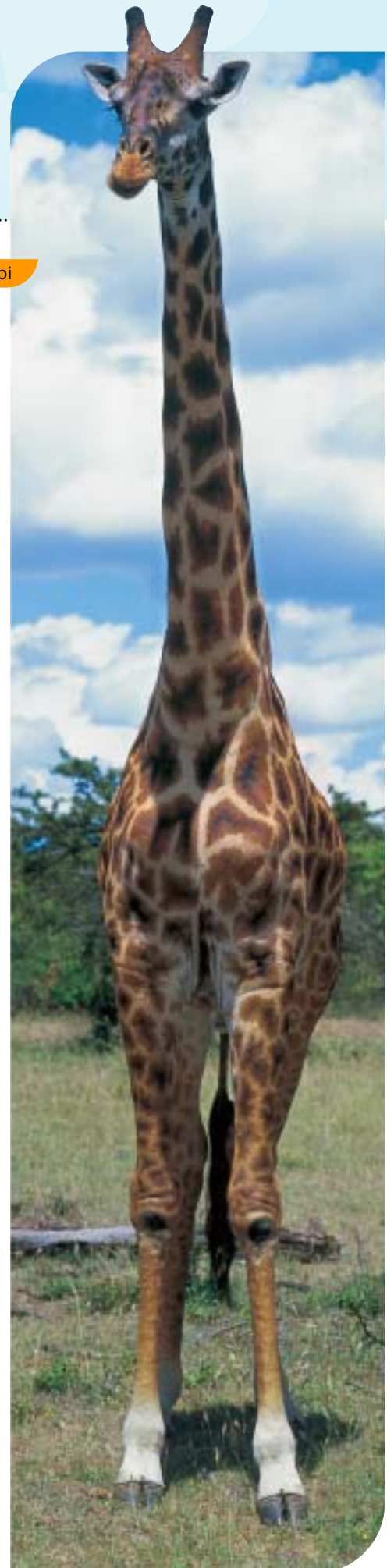
(cont.)

Higher resolution – up to 5,500 dpi

Scanned on iQsmart³
6x7cm original, scaled 350%, 300 dpi

oXYgen features (partial list)

Full 16-bit Digital Transparency (DT) files	16-bit DT files contain the highest reproduction quality of the original, enabling rapid re-purposing for print, screen or the Web.
SOOM (Scan Once, Output Many) workflow	Increases productivity and efficiency, enabling you to scan an image once, and save it as a 16-bit DT file that can be re-purposed for as many different uses as required—without the need for re-scanning.
SmartSet feature	Enables you to achieve print-ready quality with a single keystroke. SmartSet automatically adjusts the scanning parameters of an image according to preset input categories.
Full ICC color management (positive and negative)	Uses input and output color profiles to accurately manage color characteristics across the workflow. ICC profiles improve predictability, with previews of results and simulations of output on various devices.
Automatic endpoint control & color cast removal	Maximizes image quality.
Direct scan	Accelerates scanning time by allowing you to skip the preview stage and send images directly to final scan.
Split screen views	Provides side-by-side before and after viewing of each change performed with the oXYgen scanning features.
Full-resolution preview with max detail	Enables you to assess the effects of different levels of sharpness on the scan results.
Automatic sharpness control	Provides ease of use and sophisticated adjustments for complete control.
Preview browser	Lets you easily view all the images and their status.
Rotation – NEW	Enables quick image orientation (landscape, portrait, mirror).
Rescan – NEW	Saves image scanning parameters, including geometric and image editing settings, for rescanning.
Auto detection – NEW	Accelerates scanning workflow while auto detecting and cropping images in the preview browser.





iQsmart² Scanner

quality, flexibility and automation at a breakthrough price

iQsmart² is the scanning solution for imaging professionals who need an efficient, productive scanner, with high quality, advanced features, and day-in, day-out reliability. Surpassing any other scanner in its price range, the iQsmart² features XY Stitch scanning technology and the

Inverted CCD to give you fine, sharp, detailed scans from any kind of original. With the combination of an iQsmart² scanner and oXYgen Lite scanning application, anyone can have complete control over the scanning process and create innovative, high quality scans with the highest professional standards.



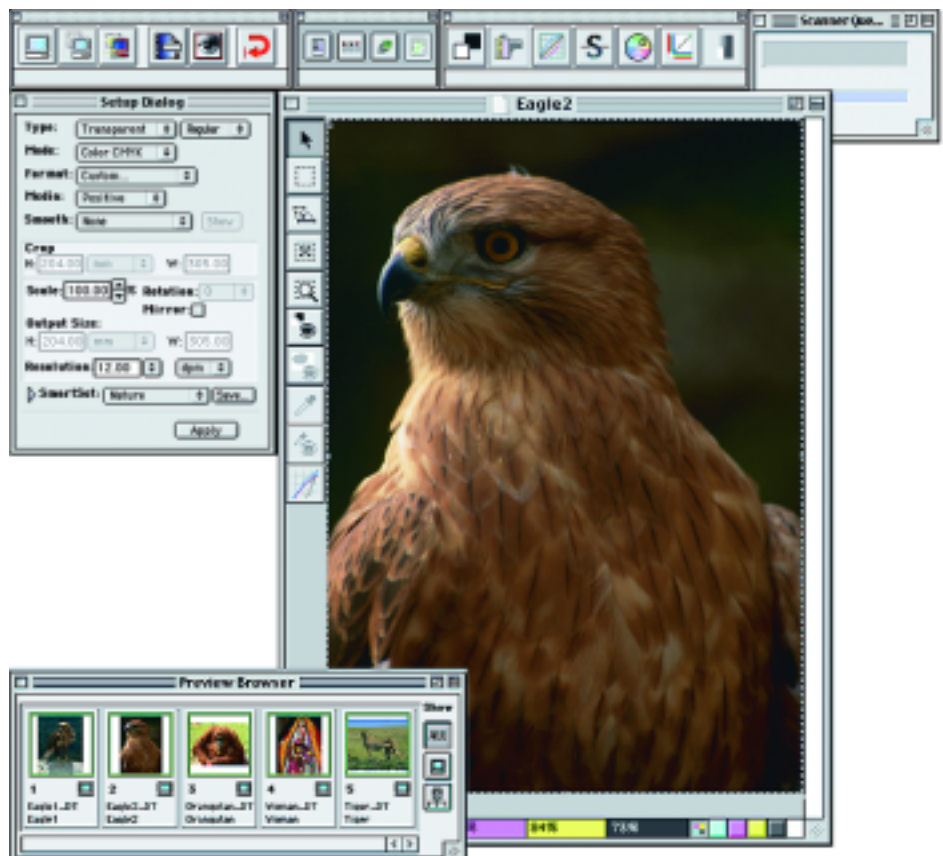
iQsmart² scanner

The iQsmart² can be operated from both Macintosh[®] and Windows[®] platforms allowing complete hardware flexibility.

oXYgen Lite

powerful scanning application for professional results

oXYgen Lite provides the full set of professional scanning and image editing tools that are found in the premium oXYgen software—including advanced image creation, editing, ICC color management and automation. oXYgen Lite does not include the 16-bit digital transparency (DT) and SOOM workflow that are included with the comprehensive oXYgen application.



oXYgen Lite user interface

Provides professional image editing and proofing tools with a highly intuitive, icon-based interface that guides you through all stages of the scanning workflow.





iQsmart Scanner Options

Oil Mounting Station

offline oil mounting for enhancing productivity and image quality

Preserve the quality of your scanned images with the Oil Mounting Station for Creo flatbed scanners. Bathing film in scanning oil conceals cracks and scratches, and is recommended for images that will be enlarged by 800% or more. Using the Oil Mounting Station saves retouching time and operational costs while reducing the apparent grain of the original image. To increase productivity, originals are mounted offline without interrupting scanner operation.

oXYgen Open application

increase productivity with offline workstations (for iQsmart³ only)

oXYgen Open boosts your productivity and efficiency by extending the 16-bit oXYgen workflow to any workstation. With oXYgen Open, 16-bit DT images can be opened and re-purposed at any location, anytime, without the need of a scanner. You can use the full range of oXYgen professional editing tools to edit images, change output parameters, and make color enhancements.

oXYgen DOT Solution

professional-quality copydot scanning (for iQsmart³ only)

With the oXYgen DOT solution and an iQsmart³ scanner, you can add copydot scanning and digital descreening to your customer services. Based on advanced algorithms from Creo Renaissance premium copydot scanners, the oXYgen DOT solution brings professional copydot scanning performance to color scanners.

The oXYgen DOT Solution is composed of two applications, oXYgen DOT and oXYgen DOT Toolkit. oXYgen DOT is a scanning application that digitizes the screened films to deliver superb copydot and descreened quality. oXYgen Dot Toolkit provides advanced functions for customizing the image for any purpose or output device—such as automatic registration, bitmap editing, resampling, tone calibration, digital descreening and more. Together, they provide a complete copydot scanning solution, enabling a SOOM workflow for re-purposing halftone film for any output device as many times as needed.

Oil Mounting Station

Professional offline oil mounting system enhances image quality and productivity



Selected iQsmart features

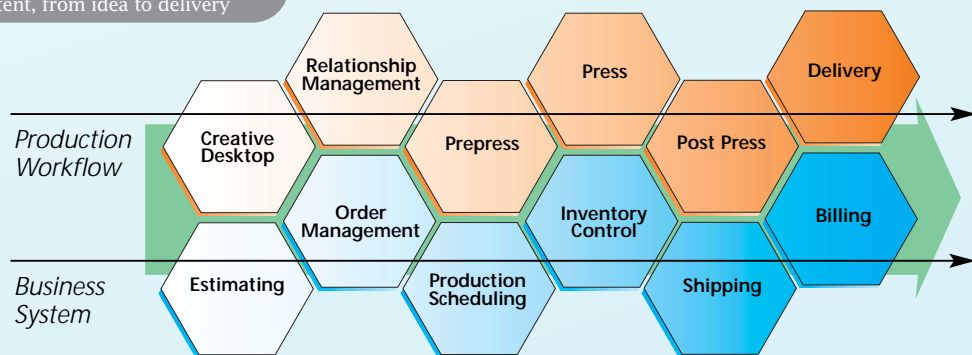
	iQsmart ³	iQsmart ²
Features	<ul style="list-style-type: none"> • flatbed CCD scanner; tri-linear 10200 element, anti-blooming CCD • XY Stitch scanning technology • Inverted CCD • Scans any type of original, including transparent (positive and negative), reflective, framed slides, line art, printed material 	
Light table	built in	no
Maximum resolution (optical)	5,500 x 10,000 dpi	4,300 x 8,200 dpi
Maximum resolution (interpolated)	10,000 dpi	8,200 dpi
Maximum enlargement	3300%	2700%
Color depth	16 bit	16 bit
Density (max)	4.1	3.9
Density range	3.9	3.7
Scans per hour*	40 (batch mode)	30 (batch mode)
Scanning area	12 x 18 in. (305 x 457.2 mm) for transparency, reflective and negative scanning 13 x 18 in. (330.2 x 457.2 mm) for copydot scanning	12 x 18 in. (305 x 457.2 mm)
Interface	Firewire/ IEEE 1394	Firewire/ IEEE 1394
Software included	oXYgen scanning application	oXYgen Lite scanning application
Options	Oil Mounting Station oXYgen Open oXYgen DOT Solution (copydot scanning)	Oil Mounting Station
Software platform	Macintosh (OS 9.1 / OSX)	Macintosh (OS 9.1 / OSX); Windows 2000 (future)

* 6 x 7 cm original, 250%, 300 dpi, using Macintosh G4 500 MHz computer

Networked Graphic Production from Creo

Connecting people, process and content, from idea to delivery

Networked Graphic Production links creative, production, and business technologies to make printing more streamlined and to better serve everyone involved in the print process. Tightly integrating Creo and partner technologies, Networked Graphic Production is an ongoing development that promises:



Improved Customer Service

by using the Internet for online quoting, job submission, project collaboration, as well as online proofing, change requests and approvals. Online communication saves courier and travel costs, reduces production delays, and provides a record of each interaction.

Streamlined Production Management

with all systems tied into one database-driven network to track every transaction. Resource planning is simplified, billing errors and change orders are reduced, while automatic load balancing optimally allocates jobs to operators and equipment.

Integrated Production and Business Systems

increase efficiency, collaboration and coordination by merging information about scheduling, invoicing, billing, and purchasing into the production network.

Optimized Press-ready File Creation

with automated software tools, designers and prepress shops can reduce the cost of errors and the delays to repair files.

Automated Content Management

provides software tools for regionalization, versioning, personalization, job-based archiving, and re-purposing of print and electronic publishing. An integrated production network will provide quick access to online digital assets, such as image libraries, templates, and reprint jobs.

Creo Customer Services

helping you profit from your Creo solution

Whatever the extent or complexity of your needs, our experts in support, technical education and service can help you plan, install, manage and grow your prepress system. We have installed over 12,000 professional scanners, and more than 2,500 CTP and 9,000 CTF systems, each one uniquely developed for specific production requirements.

Expert service means faster deployment
Our service teams will get you up and running sooner, with a solution that's designed with your business and operational needs in mind.

Professional training for greater productivity
Our prepress training programs are among the most comprehensive in the industry.

Uptime support maintains production levels
Our comprehensive, personalized support plans can help maintain optimum performance and productivity to meet your uptime needs. We focus on failure prevention, software and firmware enhancements and technical assistance, whenever and wherever you need it.

Let's Talk

Contact your Creo representative to see how professional scanning and workflow capabilities of iQsmart scanners can deliver the image quality and production speed that your business requires.

www.creo.com/scanners

About Creo

Creo (NASDAQ:CREO; TSE:CRE) is the world's largest independent supplier of prepress systems, with sales and support offices across the globe. Creo produces digital photography equipment; professional color and copydot scanning systems; variable information workflow systems; inkjet and halftone digital proofers; computer-to-film and computer-to-

plate devices; color servers for print-on-demand digital printers, and a comprehensive range of workflow, business management, networking, variable information, and creative software products. Creo is also an OEM supplier of on-press imaging technology and components for digital presses.

© 2002 Creo Inc. The products mentioned in this document are trademarks or service marks of Creo Inc. and may be registered in certain jurisdictions. Other company and brand, product and service names are for identification purposes only and may be trademarks or registered trademarks of their respective holders. Data subject to change without notice.

Produced using Creo technology



www.creo.com

<p>Creo Inc. 3700 Gilmore Way Burnaby, British Columbia Canada V5G 4M1 T. +1.604.451.2700 F. +1.604.437.9891</p>	<p>Creo Americas, Inc. Eight Oak Park Drive Bedford MA 01730 USA T. +1.781.275.5150 F. +1.781.275.3430</p>	<p>Creo Asia Pacific Ltd. 3/F 625 King's Road North Point Hong Kong T. +852.2882.1011 F. +852.2881.8897</p>	<p>Creo Europe, S.A. Waterloo Office Park Drève Richelle 161 B-1410 Waterloo Belgium T. +32.2.352.2511 F. +32.2.351.0915</p>	<p>Creo IL Ltd. P.O. Box 330 Herzlia Industrial Park 46103 Herzlia B Israel T. +972.9.959.7222 F. +972.9.950.2922</p>	<p>Creo Middle East/Africa P.O. Box 330 Herzlia Industrial Park 46103 Herzlia B Israel T. +972.9.959.7585 F. +972.9.959.7787</p>	<p>Creo Japan Inc. Ikebukuro TG Homest Bldg. 1-17-8, Higashi-Ikebukuro Toshima-ku, Tokyo 170-0013, Japan T. +81.3.5954.9050 F. +81.3.5954.9055</p>
---	---	--	---	--	---	---