

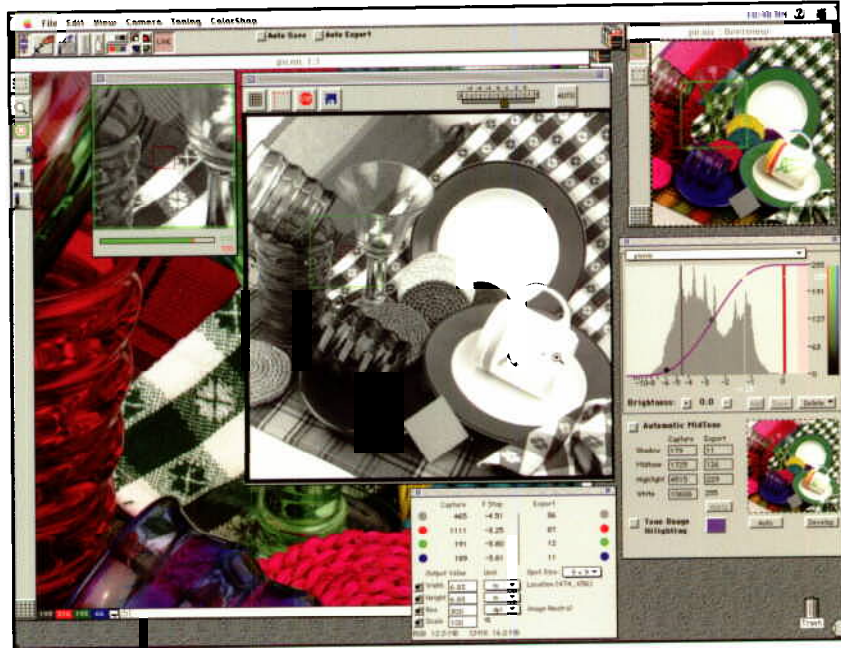
# DIGITAL PHOTOGRAPHY

## DCB II LIVE

*High performance digital camera with video preview*

*"The DCB II has the best software of the studio cameras by far. The combination of the excellent data captured by the camera and the efficient software makes it easy to produce great images very quickly. Add the fact that you can use conventional strobe lighting, and you've got a system that can start generating income almost immediately – a plus that makes the DCB II our pick in this category."*

MacUser Magazine



*This screen shot of the software window highlights some of the tools and controls when using live video from the DCB II Live*

Most companies receiving accolades like this one would probably be satisfied with just being the leading digital camera company. Well, at Leaf, we're not. While thousands of DCB users are busy making money with their digital camera, we're busy enhancing the DCB II. We're proud to introduce the DCB II *Live*, the same high-quality digital camera as the DCB II, but with live video previewing. This new feature enables photographers to compose, focus and adjust lighting with more accuracy than can be accomplished with a standard view finder. Live video runs at four frames per second and has a lupe feature providing users with a clear, easy-to-use picture for precise focusing. All this is made possible by the latest in shutter technology utilizing our new liquid crystal device (LCD).



What's more, we've added new features to the software that make using a Leaf digital camera simpler, while giving users more control and power in the process. We've added a new PhotoShop™ plug-in that quickly converts Leaf HDR 48-bit camera files to 24-bit files. Users will also be able to convert HDR files to 24-bit files through a new Drag and Drop application. And our new Double Exposure tool will allow photographers to effortlessly capture those difficult double exposure scenes. We've even improved the toning controls allowing users to easily access and apply previously saved tone curves, increasing throughput and consistency. Choose the Leaf DCB II *Live* or a DCB II, and you'll increase productivity, increase your client base and improve your company's bottom line.



**TECHNOLOGY****Model:**

Leaf DCB II *Live* digital camera back

**Function:**

Three exposure color or  
single exposure black & white pictures

**Sensor:**

2048 x 2048 pixels Thermo-electrically cooled to reduce noise Patented anti-blooming to preserve highlight detail (US Patent Pending 5343059)

**Available Camera Body Adapters:**

Hasselblad 553 ELX and  
500 EL series  
Mamiya RZ67  
Fuji GX680  
Sinar p2 and e  
Cambo Master

**Lighting:**

Compatible with virtually all studio lighting equipment, including:

- electronic strobe
- tungsten
- daylight
- HMI

**Exposure:**

ASA/ISO 200 equivalent for black & white  
ASA/ISO 25 equivalent for color  
Handles shutter speeds from 1/1000th to 1 second

**Dynamic Range:**

14 bits per pixel per color (16,384 gray levels)  
Dynamic range greater than 11 f/stops

**Computer Requirements:**

Power Macintosh  
Unoccupied slot for Leaf PCI or NuBus interface card  
72 MB RAM or more  
Monitor and video card for minimum 1024 x 768 pixels at 24 bits per pixel

**Software Configurations:**

Leaf DCB/CatchLight Power Macintosh native mode application for picture taking, tone control, and cropping  
Optional Leaf ColorShop for RGB to CMYK conversion, unsharp masking, image scaling, etc.  
Leaf Contact Sheet application for rapid viewing of images  
HDR Converter and HDR Converter PhotoShop plugin

**Dimensions:**

5.0 inches (127mm) W x  
5.0 inches (127mm) H x  
4.3 inches (110mm) D

**Weight:**

approximately 1.9 lbs. (0.82 kg)

**Power Supply:**

110-220- volts AC, 50 or 60HZ auto-switching

**Agency/Safety Approvals:**

FCC class A, DOC class A, CE, UL, CSA, TUV

**Live Video Specifications:**

512 x 512 pixel viewing  
4 frames per second B/W with LCD shutter  
Automatic and manual brightness control  
Lupe tool (2-to-1 lupe)  
Sharpness meter to determine best focus  
Saving of video frames  
Grid lines for image alignment  
Tilt and swing focus axes indicators (Sinar Cameras Only)

**Professional Marketing Services, Inc.**

4802 East Ray Road, Suite #2328  
Phoenix, AZ 85044-6417  
P: 480-940-5400 F: 480-940-5488  
Email: pmsi@promarketinc.com  
Web Site: www.promarketinc.com

**Sinar Bron**  
IMAGING