

Phaser™ 480 Color Printer

Large-format, photographic-quality color printing for your workgroup, at record-breaking speeds.

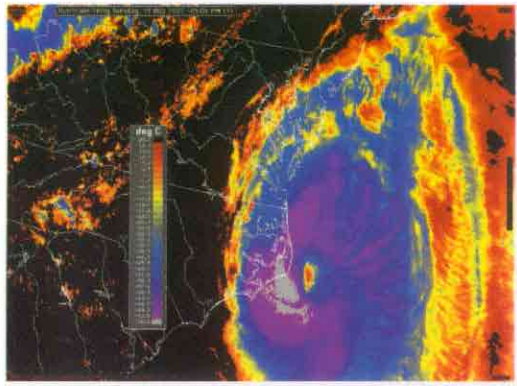


Unified Healthcare Incorporated

Children's vitamin sales

Child	Green	Red	Blue	Orange
Child 1	10	15	20	25
Child 2	12	18	22	28
Child 3	14	20	24	30
Child 4	16	22	26	32





An Investment in Productivity

With the new Tektronix Phaser 480 dye sublimation color printer you can substantially cut overhead expenses and look great at the same time. Now you can print accurate, continuous-tone color, on large format paper, at a speed of just three minutes per page. The Phaser 480 provides workgroup color printing for graphic arts, engineering/scientific, and other photorealistic applications.

Comprehensive Support for Graphic Arts

In today's competitive marketplace it pays to employ every advantage. The Phaser 480 provides an affordable alternative to costly color iterations and production delays with outside services. Waiting for color prints and proofs is yesterday's inconvenience. Now you can fine-tune color to your heart's content and review the output in moments, at your office.

Impress your clients with photographic-quality, full color layouts, without cutlines or paste-up. For project approvals, print multiple copies to speed the review process. Output sizes range from full-size, single pages to double page spreads, with plenty of room for full edge bleeds.

In-House Pre-film Color Proofing

The Phaser 480 features the expanded color matching capabilities of our exclusive TekColor™ rendering software. Graphic artists can rely on TekColor Dynamic Correction for color matching simulations of Commercial, SWOP (Specifications for Web Offset Publications), or Euroscale presses. Just what you need for critical colors such as skin tones, product color matches, and corporate colors.



PANTONE®-approved process Color simulations are standard. For applications that require additional color management support, an EfiColor™ profile is available.

Fine-tuning Technology

Tektronix introduced TekColor Photofine™ rendering in our letter-size dye sublimation printer, the Phaser IISDX. Photofine sharpens text, smoothes gradations, and optimizes image detail. It's built into the Phaser 480, as well.

Accurate Imaging of Technical Information

For engineers and scientists, the Phaser 480 offers large format, continuous-tone color printing that accurately captures fine details. Perfect for solids modeling, cartography, architectural rendering and satellite imaging. If your application requires matching the colors on your display, choose the Simulate Display color correction setting.

Three Steps Forward and No Steps Back

You don't have to be a systems expert to share the Phaser 480 with your workgroup. There's no hardware to install in your computer, no dedicated print server required. Just plug it in and you're ready to share it with Macs, PCs, and workstations – simultaneously. Ethernet is available in EtherTalk™, Novell NetWare, and TCP/IP™ protocols.



Color Experts You Can Count On

As a co-developer with Adobe of the PostScript Level 2 software for Tektronix printers, our engineers have optimized the Phaser 480 for state-of-the-art color-rendering and image processing. The result is fast, accurate color printing for your workgroup at affordable, in-house prices.

Made For Each Other

To ensure accurate, PANTONE-approved Color simulations and the most reliable performance, use only genuine Tektronix supplies and media with your Tektronix color printer. They were made for each other.

One Year Warranty

The Phaser 480 comes with a one year, return-to-depot warranty. For additional coverage, our optional RealSUPPORT™ On-site Service programs offer comprehensive and extendible service plans through our worldwide service network. Contact your Tektronix dealer for more information.

* Pantone Inc.'s check-standard trademark for color reproduction and color reproduction materials.

The Phaser 480 won't get in the way of your work. It's a tool designed to make your work flow more efficiently and speed your response to projects and deadlines. We've kept the operation simple and easy. Even our color control software was designed to minimize the learning curve and get on with production.

Fast Processing for Increased Output

Tektronix hardware and software engineers have accelerated every aspect of image processing and data handling to ensure that the Phaser 480 is the fastest color printer in its class. The Adobe™ PostScript™ Level 2 controller is hardware accelerated and supports data decompression, reducing network transmission time. The Phaser Print plug-in for Adobe Photoshop™ (Macintosh version) expedites image offload, with support for color correction and image replication.

Built-in Memory for Low Overhead

An impressive 32 Mbytes of RAM is standard. That's enough memory to handle most large photographic files, without the additional expense of a high-end, dedicated server. With the Phaser 480, you won't tie up your computer with image processing. It all takes place in the printer. You can add memory, up to a total of 64 Mbytes, to maximize input buffers and throughput, as your application requires.

MAIN FEATURES

Color Printing Technology Continuous-tone 300 dpi dye sublimation color printing

Color Systems TekColor Dynamic Correction, PANTONE solid Color simulation, CIE international color standards, and support for EfiColor and ColorSync color management

Connectivity Macintosh, IBM PC/compatibles, IBM OS/2, Windows/DOS, UNIX workstations (SUN, SGI, HP, IBM, and DEC ULTRIX), DEC VMS workstations, mainframes

Memory 32 Mbytes standard, expandable in 16-Mbyte increments to 64 Mbytes

Interfaces Standard: AppleTalk, parallel, RS-232 serial; Optional: Ethernet interfaces for EtherTalk, Novell NetWare, and TCP/IP protocols; all ports are simultaneously active without user intervention

Controller 24-MHz AMD 29000 RISC processor

Language Adobe PostScript Level 2

Standard Fonts 39 resident fonts, additional fonts may be downloaded in memory; built-in support for PostScript Type 1, Type 3, and TrueType™ fonts, SCSI port allows external hard disk drive storage of additional fonts

Media Size and Image Area

Letter:	8.5 x 11 ins.	(8.2 x 10 ins. image area)
A4:	210 x 297 mm	(203 x 273 mm image area)
Tabloid:	11 x 17 ins.	(10.7 x 16 ins. image area)
A3:	297 x 420 mm	(290 x 396 mm image area)
Tabloid Extra:	12.6 x 18.3 ins.	(11.9 x 17.2 ins. image area)

Print Speed

3-Color Transfer Roll:	Letter-size: 2.3 minutes	Tabloid Extra: 3.2 minutes
4-Color Transfer Roll:	Letter-size: 2.8 minutes	Tabloid Extra: 4.0 minutes
Black Transfer Roll:	Letter-size: 1.2 minutes	Tabloid Extra: 1.5 minutes

Media Type

Cut-sheet paper: Input tray capacity: 60 sheets Built-in output tray capacity: 20 sheets

Transfer Roll Capacity (Universal size transfer rolls print on Letter, A4, Tabloid, A3, and Tabloid Extra media)

3-color Universal Size:	215 prints per roll
4-color Universal Size:	160 prints per roll
4-color Letter/A4 Size:	210 prints per roll
Black Universal Size:	650 prints per roll

ORDERING INFORMATION

Phaser 480 standard configuration (Order 4688): AMD 29000 24-MHz RISC processor with 32 Mbytes RAM; U.S. Tabloid Extra-size input tray (adjustable for Tabloid, A3 and Tabloid Extra media); U.S. power cord; media startup kit with paper and transfer roll; user manual; cleaning kit; utilities, drivers, and sample images, with instruction manual.

Options
Option I6: 16-Mbyte Additional Memory (total of 48 Mbytes), required for 4-color output on Tabloid-size media
Option 32: 32-Mbyte Additional Memory (total of 64 Mbytes)

Option P1: Ethernet interface for EtherTalk and Novell NetWare protocols
Option P2: TCP/IP protocol support for Ethernet interface (requires option P1)
Options A1, A2, A3, A5: International power cord options
Option S0: Installation and setup
Options S1, S2, S3: One, two and three years of RealSUPPORT on-site service

Upgrades and Accessories
4688F16: 16 Mbytes RAM Upgrade (A total of 48 Mbytes RAM is required for 4-color output on Tabloid-size media)
4680FPI: Ethernet interface for EtherTalk and Novell NetWare protocols

4680FP2: Support for TCP/IP protocol (requires Ethernet interface)
4688FSS: Letter-size supplies startup kit (Letter-size input tray, paper, and transfer roll)
436-0272-00: Letter-size input tray (adjustable for Letter and A4 media)
063-1748-00: EfiColor profile
469CART: Printer cart with three shelves

Ethernet Cable Adapters

011-0162-00: Ethernet Twisted Pair (10BaseT) Adapter
011-0161-00: Ethernet Thin Net (10Base2) Adapter
011-0160-00: Ethernet Thick Net (10Base5) Adapter

Workstation software

4690F22: Phaser Print for Sun Workstations

4690F23: Phaser Print for SGI Workstations
4690F24: EasyCopy/X for HP 9000 Workstations
4690F25: EasyCopy/X for IBM RS/6000 Workstations
4690F26: EasyCopy/X for IDEC ULTRIX Workstations
4690F29: EasyCopy/X for DEC VMS Workstations
4690F41: PhaserSym (VMS Print Symbiont)

SPECIFICATIONS

Temperature

Operating: 15° to 30° C (59° to 86° F)
Non-operating: 0° to 35° C (32° to 95° F)

Humidity

Operating: 10 to 80% R.H. non-condensing
Non-operating: 10% to 80% R.H. non-condensing

Altitude

Operating: 0 to 10,000 feet
Non-operating: 0 to 30,000 feet

Dimensions

Height: 13.4 ins. (340 mm)
Depth: 22.4 ins. (570 mm)
Width: 20.5 ins. (520 mm)
Weight: 85 lbs. (38.6 kg)

Input Power

90 to 132 VAC or 180 to 250 VAC
47 to 63 Hz
150 watts idle, 600 watts maximum

Safety and Emissions

UL 1950: CSA C22.2 (950); IEC 950, EN60950; FCC Part 15, Class B Compliant; CISPR 22, Class B

Professional Marketing Services, Inc.
4802 East Ray Road, Suite 2328
Phoenix, Arizona 85044-6417
P: 480-940-5400 F: 480-940-5488
E-mail: pmsi@promarketinc.com
Web Site: www.promarketinc.com

Tektronix®, TekColor™, Photofine™, and RealSUPPORT™ are trademarks of Tektronix, Inc. Phaser™ is a trademark of Tektronix, Inc. for color printers and related products. All other trademarks are the property of their respective manufacturers. Norm Thompson catalog pages © 1993 Norm Thompson Outfitters. Four Girls image © Bruce Forster. Replication image © 1993 Don Emmerich. Pantone® Colors generated by the Phaser 480 are four-color process simulations and may not match Pantone-identified solid color standards. Use current Pantone color reference manuals for accurate color. Pantone Color simulations are only obtainable on these products when driven by qualified Pantone-licensed software packages. Contact Pantone, Inc. for a current list of qualified licensees. The information in this brochure is subject to change without notice. Copyright © 1993 Tektronix, Inc. All rights reserved.