

## The Revolutionary FireWire Scanner for Creative Professionals



*Hot-pluggable  
FireWire Support  
for Fast, Versatile  
Image Capture*

- 3.4Dmax and 1200 dpi high resolution
- Up to twice as fast as identical SCSI scanner
- Hot-pluggability
- Mac peer-to-peer communication with multiple host capability
- Hot Swap Warranty



### **Revolutionary Technology.**

The UMAX PowerLook 1100 scanner provides the fast speed of FireWire/IEEE-1394 device technology along with a robust feature set that gives you ease of use. The Mac peer-to-peer communication with multiple host capability feature allows two or more computers the ability to use a single scanner. This makes a cost effective solution for your whole work environment. With Hot-pluggability you can connect or disconnect the scanner at any time without restarting the system. No termination or SCSI card is required.



**Professional Quality.** The UMAX PowerLook 1100 offers 1200 x 2400 dpi (ppi) hardware resolution that produces high-quality, scalable scans with superb detail and accuracy. With the UMAX' patented Bit Enhancement Technology, you'll get even sharper and more detailed 42-bit output. With 1200 dpi, you have enough power to scan 35mm slides and enlarge them to letter size. With the Dmax of

3.4, impressive shadow detail is captured from professional transparencies.

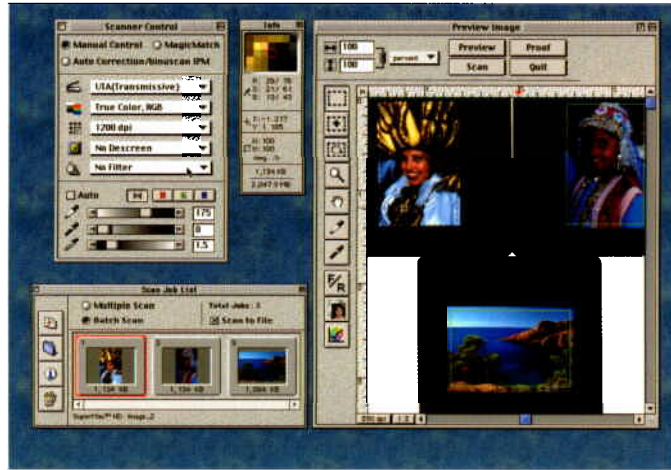
### **Bundled with MagicScan**

**Scanning Software.** MagicScan combines expert features and ease-of-use to deliver professional image quality for scanner users at all levels of expertise. MagicScan offers sophisticated color tools designed to meet the "by-the-numbers" demands of professional graphic designers, photographers, and pre-press professionals. In addition, automated expert features empower less experienced users with the ability to achieve professional-quality results. For accuracy, the adjustable preview resolution enables fine-tune cropping, while the proof function shows the "end result" prior to scanning for last minute adjustments. For productivity, the job list window allows the scanner operation to track progress of batch scanning multiple images. MagicScan is fully ColorSync and ICC compatible.

# UMAX PowerLook 1100



**UMAX  
Product  
Awards**



## MagicScan Offers Three Scanning Modes

Manual Mode is designed for professional users who require complete control over image acquisition. "Manual" adjustments include unsharp mask, descreen, saturation, downloadable gamma curves and much more.

MagicMatch Mode is geared towards users who desire color matching control. Based upon Kodak's CMS color matching technology, MagicMatch provides a calibration-based profiling system for output devices.

Auto Correction/binuscan IPM Mode only requires the user to select the original type, the color mode output and output resolution. Once scanned, the images are automatically color corrected by the IPM in the background.

### FEATURES BENEFITS

**Fast Speed**  
**Hot-Pluggability**

Up to twice as fast as identical scanner with SCSI interface  
Connect or disconnect scanner to a computer without restarting the system

**MAC Peer-To-Peer Communication**  
**with Multiple Host Capability**

Two or more computers can share the same scanner when they are daisy chained on the FireWire bus

**3.4Dmax with 1200 dpi**

Captures fine shadow details and allows user to scan slides and enlarge them to letter size

**Hot Swap Warranty**

Immediate replacement of product for the first year

### SPECIFICATIONS

**Hardware Resolution**

1200 x 2400 dpi (ppi)

**Color Scan Method**

Single pass, 10,600 element tri-linear CCD

**Scanner Speed**

9.6ms/line (for quality scan, color mode)

4.8ms/line (for speed scan, color mode)

**Maximum Document Size**

Reflective: 8.5" x 11.7"; Transparency; 8.5" x 10"

**Dmax**

3.4D

**Input/Output Buffer**

4MB

**Scanning Resolution**

1 dpi to 9600 dpi

**Scanning Modes**

Color Mode: 24 bits per pixel, 42 bits/pixel extendible

Grayscale Mode: 8 bits/pixel, 14 bits/pixel extendible

Lineart Mode: 1 bit/pixel

**Scanning Settings**

Scaling: 1% to 800% in 1% increments

Brightness: ± 100%

Highlight/Shadow: 256 steps

**Gamma Curve**

Downloadable curves

**Data Output**

14-bit (extendible)

**Hardware Interface**

FireWire/IEEE 1394 (2 x 6-pin connectors)

**Environmental Ranges**

Operating Temperatures; 50 - 104° F (10 - 40° C)

Relative Humidity; 25% - 85%

**Power Requirements**

Voltage; 100 - 240 VAC

Frequency; 50 - 60 Hz

**Dimensions**

21.3" x 13.2" x 6.5" (Including Transparency Adapter, UTA-1100)

**Operating Noise**

Under 55db

**Net Weight**

26.24 lbs (Including UTA-1100)

**PROFESSIONAL MARKETING SERVICES, INC.**

1520 W. MINERAL RD, SUITE #1

TEMPE, AZ 85283

(480) 940-5400 FAX (480) 940-5488