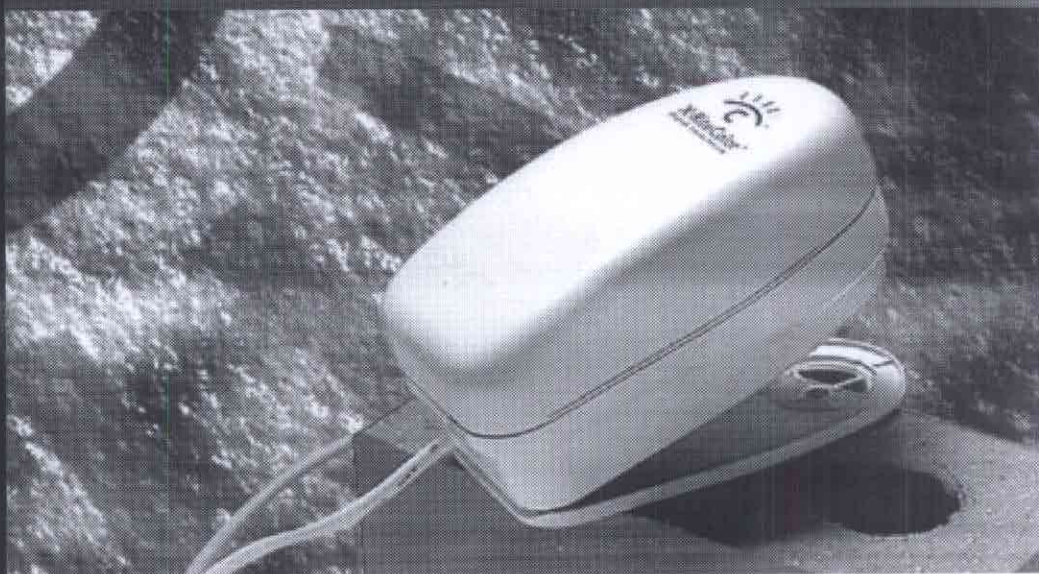


**Desktop
Spectrophotometer
for Digital Imaging
Applications**



The X-RiteColor® Digital Swatchbook® is the most accurate and repeatable desktop reflective spectrophotometer available.

The Digital Swatchbook Spectrophotometer

It couldn't be any easier to get the colors you want. Simply press the tethered spectrophotometer against whatever object you want to measure. Digital Swatchbook's powerful microprocessor technology quickly calculates 31-point spectral information and sends it to your color software.

The instrument sends information to your computer using a connection to your Macintosh, Windows or Silicon Graphics serial port. It also can be used with Sun applications with an optional interface cable.

Powerful Software

The Digital Swatchbook is widely supported by many software packages for use in prepress, graphic design, photography, medical, large-format, on demand, and color printing applications on Macintosh, Silicon Graphics, Windows and Sun computers.

X-Rite offers ColorShop, which is a package of powerful color manipulation software for working with the spectral data produced by the Digital Swatchbook. It consists of the ColorShop software, a package of easy-to-use design and color production software tools. It also includes tools for densitometry functions, and color management CMYK printer profiles. ColorShop is compatible with Macintosh and Windows platforms.

The Ultimate Color Communications Package

The Digital Swatchbook is so fast, accurate and easy to use that it will become your primary color communication tool. It contains a variety of time-saving color control tools that you will use daily. This collection of simple, yet useful, software will save you time and money and can help you prevent color disasters on output.

Digital Swatchbook System

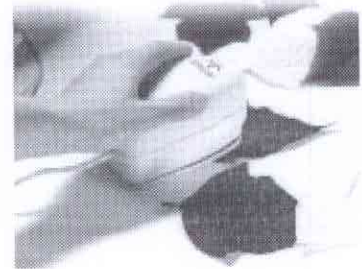
Digital Swatchbook system includes everything needed to connect and begin using it in minutes:

- Hand-held tethered spectrophotometer
- Calibration reference
- ColorShop software for Mac OS and Windows
- Interface cable and power supply
- Complete documentation on disk for immediate online access

Digital Swatchbook Instrument

The instrument-only configuration includes everything you need to work with leading third-party software applications:

- Compatible with third-party color management, calibration, color control and communication
- Computer interface cables for Macintosh, Windows, Sun and SGI computers and instrument AC adapters
- Instrument connection documentation
- Platform and application independent



Specifications

Measuring Geometry

45°/0° per ANSI / ISO 5.4 and ANSI / NAPM IT2.17

Measuring Area

4mm diameter

Light Source

Gas pressure tungsten @ 2850°K

Spectral Sensor

DRS Technology, 16 point engine, 31 point reporting

Measurement Time

< 2 seconds per measurement

Illuminant Types

A, C, D50, D55, D65, D75, F2, F7, F11 and F12

Standard Observers

2° and 10°

Output

31-point spectral data, colorimetric data or density (ANSI / ISO status T, L, A, and E)

Spectral Range

400nm - 700nm

Reflectance Range

0-200%R

Accuracy

<1 ΔE max., <5 ΔE average

Repeatability On White

2 ΔE max

Inter-Instrument Agreement

<1 ΔE max., <5 ΔE average

I/O connection

Mini DIN 8-pin Plug
- DB9 Socket Adapter

Data Interface

Interface: RS-232 serial interface with baud rates from 1200 to 19.2k
Protocol: X-Rite RCI commands used under license

Power Requirements

12v DC @ 1000mA

Environmental

Operating Range:
+10°C (50°F) to 35°C (104°F);
30% to 85% RH
RH ratings are non-condensing

Physical Dimensions

Height: 6.9cm (2.7in)
Width: 7.6cm (3.0in)
Length: 13.7cm (5.4in)

Weight

340g (12 oz)

System Requirements: Digital Swatchbook System

Macintosh:

- 608040 processor or newer
- Power PC recommended
- System 7.6.1 or newer
- 16MB of RAM
- 17MB of hard disk space
- ColorSync 2.1.2 or newer
- 24-bit color monitor/display card recommended

Windows:

- Pentium class processor
- Windows 95/98/NT4 or 2000
- 16MB of RAM
- 15MB of hard disk space
- 24-bit color monitor/display card recommended

Provided Accessories

Calibration Reference
Operation Manual
DB9 Socket Serial Adapter
AC Adapter

Optional Accessories

Sun Spark Adapter
(SE108-DB25PA)

For the most recent list of supporting third-party software, see X-RiteColor Enabled Partner literature item (L11-031A and L11-031B) or web page under our Support & Training Page at www.x-rite.com.

This product covered by U.S. and foreign Patents and Patents Pending.

Specifications and design subject to change without notice.

Benefits

- Fast and simple to use
- Find matching PANTONE® colors or the estimated CMYK values
- Communicate with service providers using information like L*a*b*, density, and other color descriptions
- Supported by virtually every color calibration and color measurement solution available today
- Backed by X-Rite's service programs and superior global warranty
- Supported by world-class application support and service teams

Features

- Measures spectral data, the most accurate and complete color description
- Includes built-in processor for fast and accurate measurement data
- Uses X-Rite's patented two-way serial communication technology.
- Works with Mac, Sun, DOS, Windows, and Silicon Graphics computers
- Compatible with third-party color management and calibration software
- Platform and application independent (interface adapter(s) required)

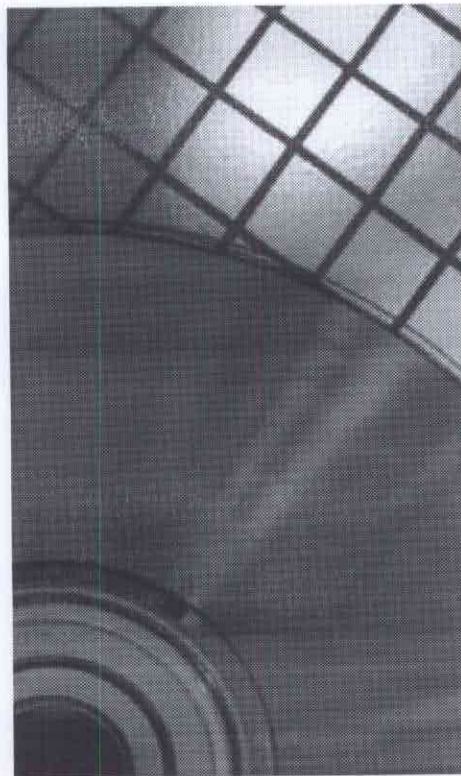




X RiteColor™

ColorShop™

Color Tools
for creative
professionals



ColorShop™

ColorShop is our collection of extensible color selection and integration tools designed specifically for color professionals. You can save valuable time, effort and materials by using ColorShop to simplify everything from selecting the right colors for your layout, creating new complimentary colors, previewing them on screen, ensuring they are printable, and checking the final printed color version.

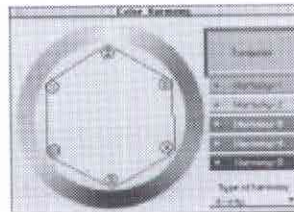
ColorShop can even help you find the closest PANTONE® match or repurpose your colors to fit within the restricted Internet color space.

ColorShop puts the power of *Color* at your fingertips

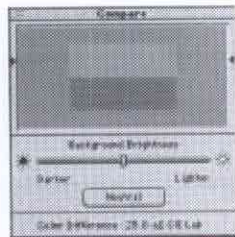
With the use of color on the rise, accuracy and flexibility in the definition of color can mean the difference between a profitable job and a color headache. ColorShop has its roots in Spectral data, the most complete and accurate description of color. And because ColorShop can open your eyes to so many ways of communicating color effectively, we actually refer to spectral data as *The Language of Color*.



Use the **Match Tool** to quickly reference thousands of included PANTONE colors, or any of your own custom palettes. Find the colors you want without wasting time flipping through a fan deck.



The **Harmony Tool** automatically suggests a menu of up to six complimentary colors for any selected color. Use it to simplify selection of color schemes for your layouts.

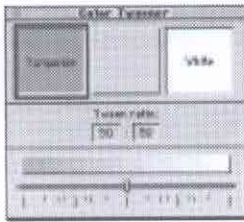


The **Compare Tool** lets you evaluate two colors both numerically and visually. You can even change the background color to see how drop-outs or colored papers might look.

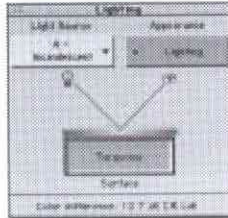


Verify and compare the capabilities of two color devices using **Gamut Viewer**. Choose any ICC format profiles to see how your monitor and printer differ in their color capabilities—or compare your desktop printer gamut to that of the final printing press. See if your on-screen colors will reproduce on imaging devices before locking them in.

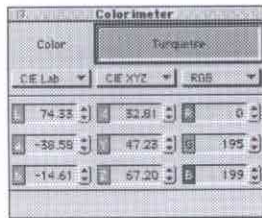
Put the power of *Color* at your fingertips



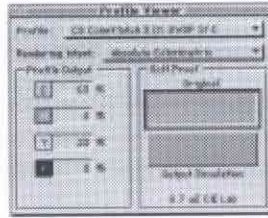
The **Tweener Tool** gets you "between" colors. Use it to create new colors by blending or mixing two or more selected ones. It's great for quickly evaluating color combinations.



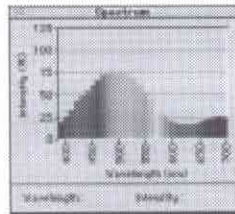
The **Lighting Tool** finally lets you preview what your colors will look like under different lighting conditions. You can pick from several types of common lighting conditions based on standard illuminants.



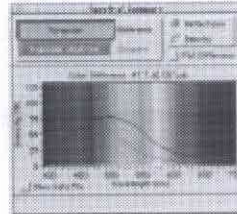
Use the **Colorimeter Tool** to convert colors to a wide range of color spaces that are standards in the graphic arts industry. Use these values to objectively evaluate colors and to communicate color information to service providers.



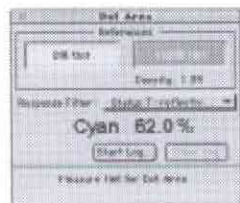
Use the **Profile Viewer Tool** to estimate CMYK process builds of a spot or measured color based on a specific ICC device profile and rendering intent. It even shows an output simulation and Delta E shift.



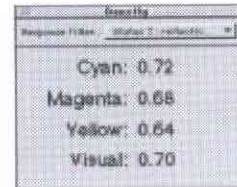
The **Spectrum Tool** gives you the power to see the underpinnings of color—its spectral curve. It is the most precise and complete method of describing a color.



Use the **Spectral Compare Tool** to compare the spectral reflectance curves of two different colors. Or switch to the density mode and view the curves. You can even plot the difference in either mode.



The **Dot Area Tool** is used to evaluate the actual tone values of printed tints. Evaluate press sheets and proofs for quality control—or use the values to calibrate your printer or proofing system. Simply set base and solid references—additional samples will yield the actual dot area values.



The **Density Tool** calculates international standard status density from color samples. Select from Status T (US), Status E (common in Europe) or Status A (used in photography). All four process color values are shown at once, making it easy to find the highest reading or for quick assessment of gray balance.



Professional Marketing Services, Inc.
4802 East Ray Road, Suite 2328
Phoenix, Arizona 85044-6417
P: 480-940-5400 F: 480-940-5488
E-mail: pmsi@promarketinc.com
Web Site: www.promarketinc.com

GET MORE OUT OF COLORSHOP

Add Color Measurement Capabilities!

ColorShop is the core software technology that drives X-Rite's creative color measurement solutions. If you can't measure colors, you can't control them. X-Rite color measurement devices, such as the Monitor Optimizer, Digital Swatchbook and Colortron work with ColorShop to enable you to preview colors on a calibrated monitor and capture logos or other client-provided colors from real-world objects. ColorShop's driver technology promises expanded color measurement device connectivity in the future. You can also measure your color prints and proofs, and communicate more effectively using *The Language Of Color.*



Monitor Optimizer™



Digital Swatchbook™



Colortron™